

Tlahtolixcopincayotl Atliaca, Guerrero

Humberto Iglesias Tepec
Joanna Maryniak

Tlahtolixcopincayotl/Humberto Iglesias Tepec, Joanna Maryniak

Amoxmecayotl: © Totlahtol

Amoxmecayopil: © Toconejuan

Amoxmecayotl tlayecanqueh: Justyna Olko ihuan John Sullivan

© Humberto Iglesias Tepec, Joanna Maryniak

© Huei Temachtilizcalli Varsovia, Facultad de “Artes Liberales”

Ica ome tlatepozihcuilolli tlahueltlalilli

ISBN: 978-83-957318-4-6

Warszawa 2020

In yehhan amoxihtic otlatlahmachiyotih, oquintecpan in amameh ihuan oquichihchiuh in tlaixpan amatl: © Joanna Maryniak

In aquin oquitlapallotih in tlapaltlamantli ica notenquixtia in amoxmecayotl Totlahtol ihuan amoxmecayopil Toconejuan: © Martha Elena Ramírez Oropeza

Amoxmecayotl Totlahtol



Amoxmecayopil Toconejuan



Tlahtolixcopincayotl Atliaca, Guerrero

Humberto Iglesias Tepec
Joanna Maryniak

Huei Temachtilizcalli Varsovia
Facultad de “Artes Liberales”



Center for Research and Practice
in Cultural Continuity



Teixpantiliztli

In *Tlahtolixcopincayotl* tlin oquichihchihqueh Humberto Iglesias Tepec ihuan Joanna Maryniak quiyolitia miec tlahtolli ica iixcopinca. Nochi tlahtolli tlin nican nezticah quitequitiltiyah ihuan quicuiyah tlacameh inhuan zohuah yehhan nemih Atliaca, Guerrero. Ahueh miequeh coconeh inhuan tlacameh ompa Atliaca cualtzin tlahtoah nahuatlahtolli, ye pehua poliuhtih. Noiuhqui nemih ocoquimeh coconeh yehhan xoc tlahtoah nahuatlahtolli nozo mexicanoh. Yehha ica nonequi quimatizceh intlahtol ihuan quinomachtizceh.

Ticnequih ma yolpaquican coconeh inhuan intahtzitzinhuan pampa ica in *Tlahtolixcopincayotl* nohueiliz intlahtoltlamatiliz. In amoxtli quiapiya miec tlahtolli yehhan ye huehuehnahuatl: quitequitiltiyah mahuelohhuan, toltecatlacameh, mexihcatlacameh inhuan macehualmeh yan nemiyah Atliaca ihuan Guerrero in ihcuac xxe hualayah caxtillantlacameh. Noiuhqui quihtoah quen catca innemiliz mahuelohhuan yehhan nemiyah pan huei altepeme tlin Teotihuacan, Tollan, Tenochtitlan ihuan ipan miec altepetl pan Guerrero.

Tiquihozceh ce tlahtolli ica tlahcuiloani. Humberto hualeuhticah Atliaca ihuan aman nemi niman tequitl Santa Ana Tlacotenco. Temachtia inglestlahtolli ihuan nahuatlahtolli, tlatehtemoah ihuan quichihua miec tlamantli tlahtolyoltiliztequitl. Joanna quizticah pan Łódź,

Poloniah, niman tequiti pan Huei Caltlamachtiloyan tlin Varsovia, Facultad de “Artes Liberales”. Quimati miec tlah-tolli tlin Europah ihuan Asiah. Noiuhqui onomachtih nahuatlahtolli ne Varsovia ihuan melahuac quimati. Zannoyeh quiyolpactia quichihchhua maixcopincayotl. Humberto ihuan Joanna oquitequitqueh in amoxtli zan pampa maca ma polihui niman maca ma nelcahua nahuatlahtolli yehhan notequitiltia Atliaca.

Justyna Olko ihuan John Sullivan

Tohuehcanelhuayo

Humberto Iglesias Tepec

ihuan Justyna Olko



Olmecah ihuan Teotihuacan

Olmecatlacameh oquipehualtihqueh miec tlamantli pan Mesoamericah. Noiuhqui pan in cahuitl otzimpeuhqueh miequeh altepeme pan Guerrero yehhan tianquizoayah inhuan miequeh yehhan nemiyah ipan occequimeh calpam-meh, quenon: Oaxaca, Veracruz, Mayahtlalli. Ipan Guerrero ipan in cahuitl oitzmolin ce huei altepetl itoca catca Teopantecuanitlan yehhan tlayecanaya ipan occequimeh altepeme quenon: Oxtotitlan, Juxtlahuaca, Xochipala, Zumpango del Río nozo Chilpancingo. Ye quipiya canah 3400 ihuan 2500 xihuitl ihcuac nemiyah macehualmeh ompa Teopantecuanitlan. Quipiyayah cualtzitzimmeh caltin, teocaltin ihuan teuccaltin campa nemiyah tlayecanqueh. Noiuhqui oncatca ome tlachco campa nahuiltiyah ollamalitztli¹. In huehuehtlacameh noiuhqui techcahuilteuhqueh cualtzin tlahcuilolli ihtic oztomeh: quenon ne Oxtotitlan ihuan Juxtlahuaca.

Xticmatih tlin tlahtolli quitequitiltiyah. Zan ticmatih nahuatlatlacameh catcah niman imin-nemiliz tlin opanoc ipan Mezoamericah cemi ye

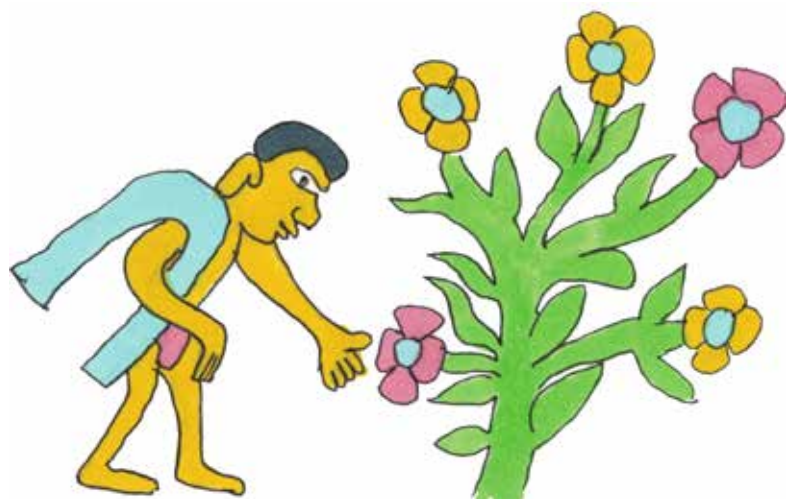
1 Ahuiltapayolahcilitztli.

Olmecah ihuan Teotihuacan



Olmecah ihuan Teotihuacan

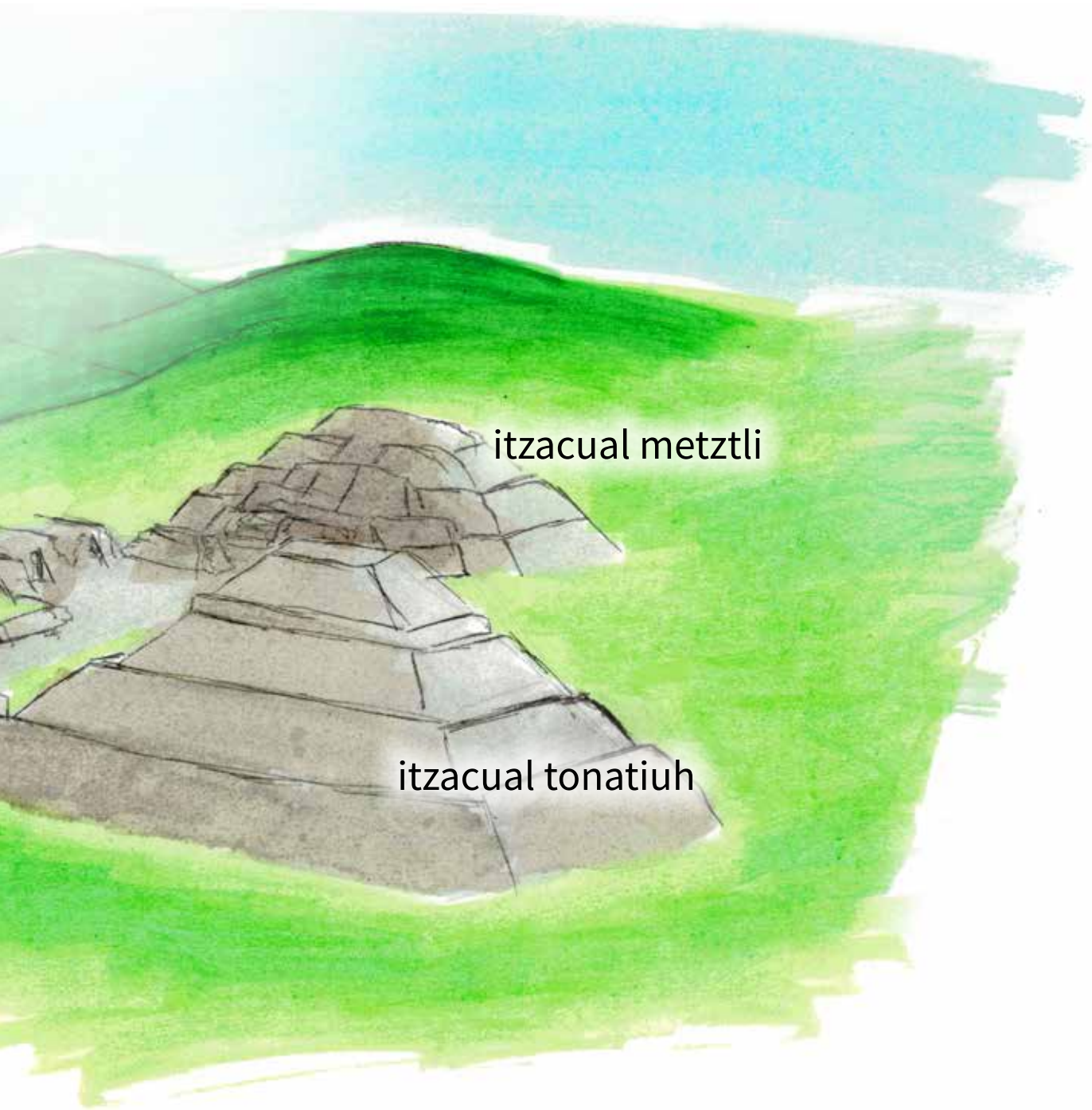
huehcahui. Ye quipiya canah 2000 ihuan 1500 xihuitl macehualmeh yehhan chantiyah ne huei altepetl Teotihuacan tlahtoayah nahuatlahtolli. Ipan on huei altepetl nemiya canah 120,000 macehualli yehhan hualehuayah tlahtlaluiz tlaltin. Oquichihchihqueh ce huei altepetl, quitequitiyah imintlal niman noiuhqui notlanemaquiltiayah ihuan notlacoahuiliayah iminhuan occequimeh altepemeh tlin Mezoamericah. Itoca in huei altepetl Teotihuacan otechpanoltilihqueh mexihcotlacameh. Yehhan quelnamiquiyah in huei ohtli itoca miccaohtli, imohhui on meccatzitzimmeh. Noiuhqui quelnamiquiyah ome tlatzacualli: ce itoca tonaltzacualli ihuan on occe



miccaohtli

Olmecah ihuan Teotihuacan

itoca metztzacualli. Occe huei teocalli ihuan tlachihualtepetl itech tlapohualli Quetzalcoatl.



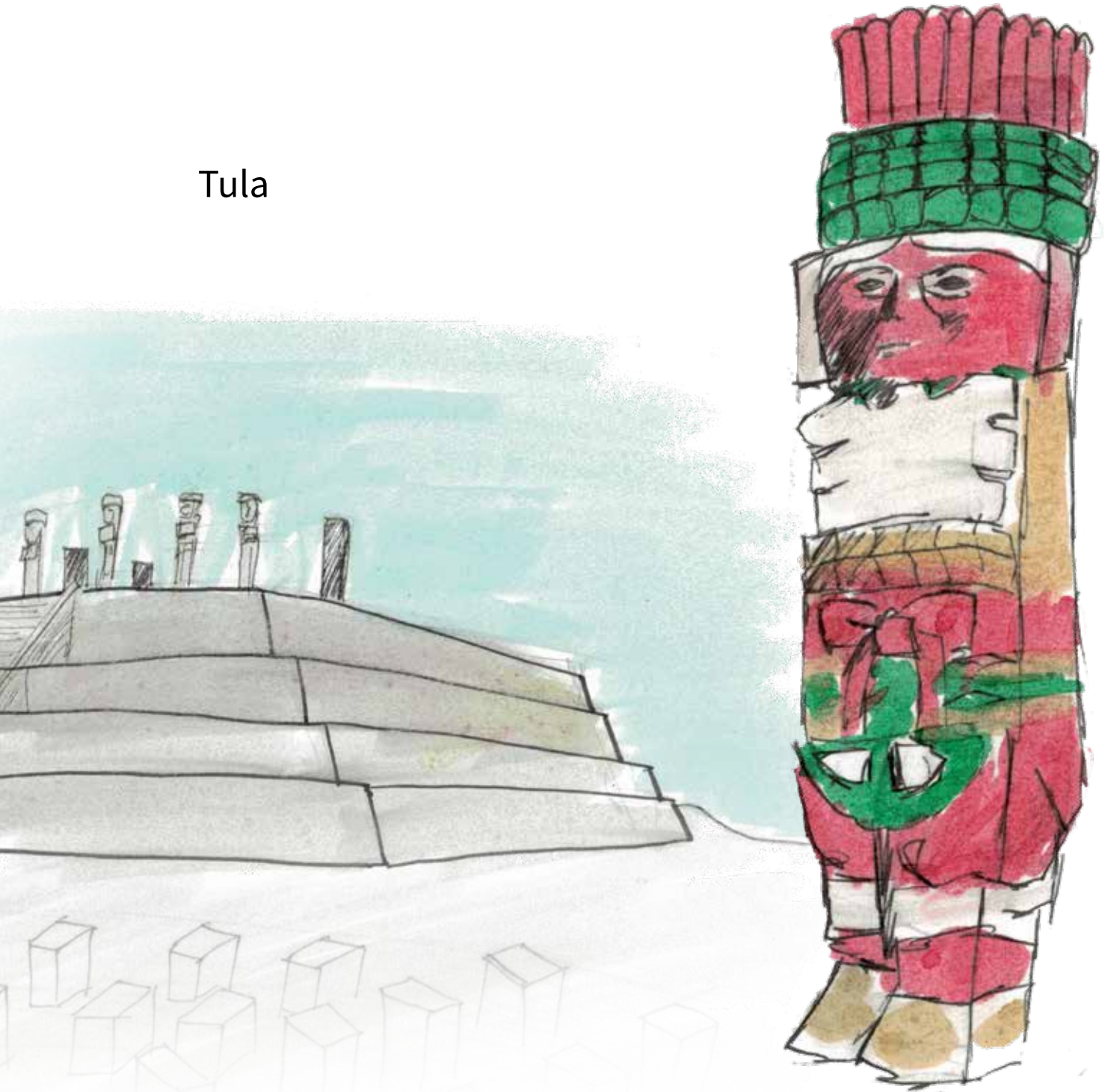
Tollantlacameh

Tollantlacameh oquichihchiuhqueh ce altepetl yehhan oquitocayotihqueh Tollan ihcuac onotlamiltih Teotihuacan ipan huei xiuhcahuitl VIII ihuan IX. Aman hueli tiquittah caltin tlin oquinchihchiuhqueh, notocayomatih Tollan ipan Estado tlin Hidalgo. In tollantlacameh cualli nohuicayah imintech on macehualmeh tlin icuatipan ihuan itzintlan Mezoamericah. Tollan catca ce huei altepetl niman itlanahuatil quipanahuiyaya Mexihcotlalli. In altepetl oquixotonihqueh niman oquitlatihqueh ipan XI huei xiuhcahuitl. Ipan on tonaltin opeuhqueh yehcoh tlacameh yehhan notocayotiayah chichimecah yehhan hualehuayah icuatipanica Mexihco.



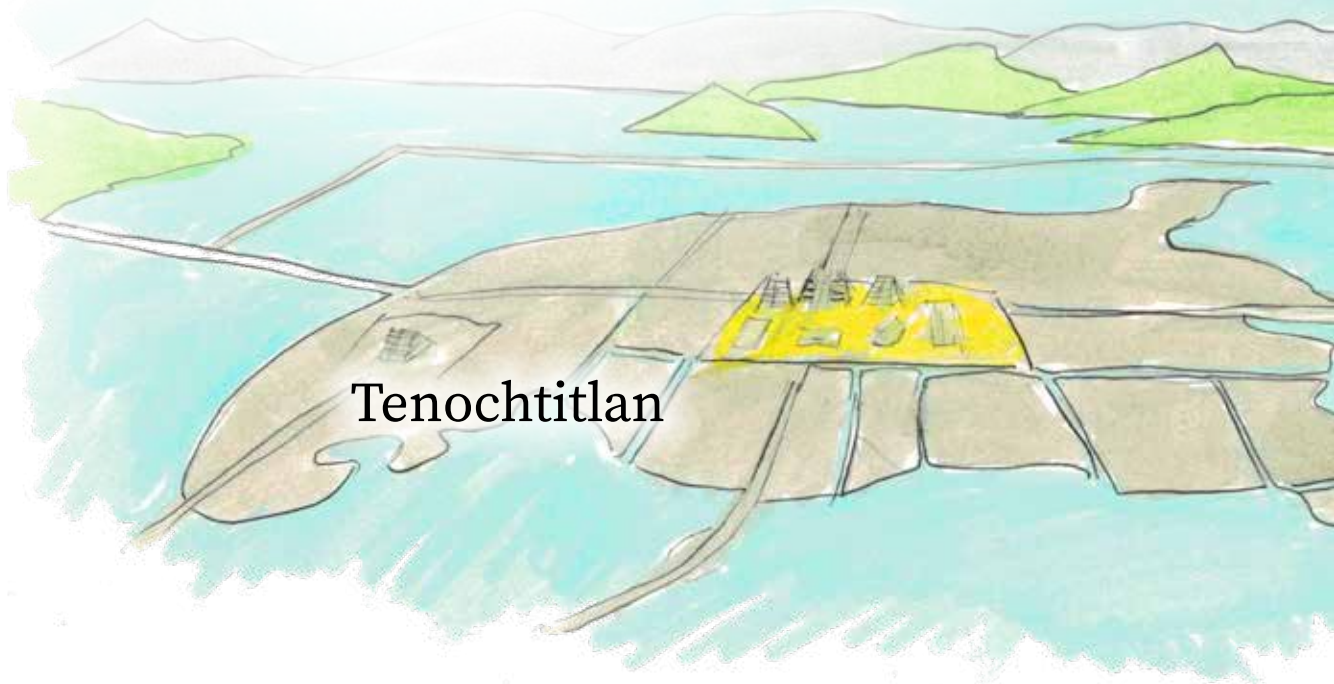
Tollantlacameh

Tula

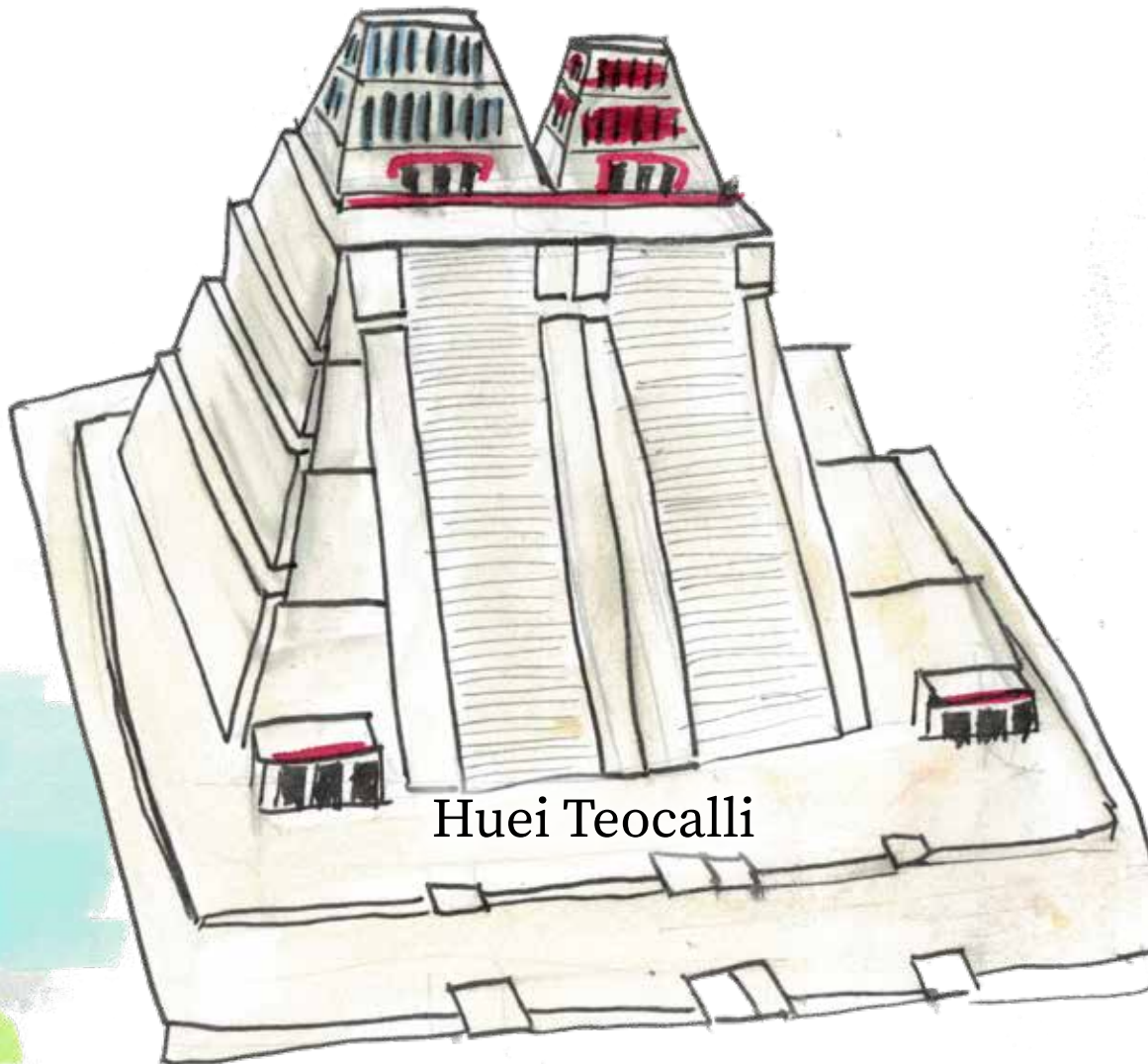


Mexihcotlacameh niman altepetl ipan Guerrero

Mexihcotlacameh noiuhqui notocayotiyah aztecah niman tlahtoayah nahuatl. Canah itlahcotiyan 1430 ihuan 1519 xihuitl, tlanahuatiyah mieccan ipan on Mezoamericah. Notocayotiyah Yexcan Tlahtolloyan niman huei catca imintlal: ahcitoya Xoconochco, Mexihco itzintlan. Mexihcotlacameh quipiyayah iminnelhuayo huehca. Pehuaya iminhuan on tollantlacameh iminhuan chichimantlacameh (noiuhqui notocayotiyah chichimecah) yehhan hualehuayah icuatipan Mexihco. Iminaltepehuan catcah Tenochtitlan, Texcoco ihuan Tlahcopan. In altepemeh ocachitlayecantitcatcah xquen Tenochtitlan yehhan nocahuaya ipan ce acomolli ipan Texcoco.



Mexihcotlacameh niman altepetl ipan Guerrero



Huei Teocalli

Ompa noiuhqui oncatca ce Huei Teocalli yehhan aman tiquittah ipan Mexihco. In mexihcotlacameh yehhan tlayecanayah nixmatiyah quen “cuauhtli ihuan ocelotl”. Catcah tlanemacaqueh, pochtecatlacameh, yayah ipan nochi Mezoame-ricah ihuan quihualquiyah huehca miec tlamantli tlin quinemacayah ipan tian-

Mexihcotlacameh niman altepetl ipan Guerrero

quiz yehhan oncatca Tlatelolco. On tlahcuilohqueh oquicauhteuhqueh miec amoxtli campa otlahcuilohqueh ica imintlahcuilol ihuan noiuhqui miec tetl ica imixcopinca Totahtzitzinhuan quenon Quetzalcoatl, Tlaloc, Huitzilopochtli, Xiuhteuctli ihuan Xipeh Totec.

On mexihcah quichiuhqueh miac tlahuihzoquiliztli ipan imaltepehuan Guerrero. Ompa nemiyah macehualmeh yehhan tlahtoayah nahuatlahtolli inhuan tlapanecah nozo mempha. Miequeh altepemeh oquimpachohqueh, quenon: Tepequacuילו, Tlacozahuititlan, Zompanco, Teltellan, Tlapan, Tecpantepec, Ayotlan, Omepetec, Chiauhtlan, Quiauhteopan, Tecomaixtlahuacan nozo Yoaltepec. Noiuhqui xohuelqueh oquin-



Tlatelolco

Mexihcotlacameh niman altepetl ipan Guerrero



Quetzalcoatl

Tlaloc



tlanqueh on Yopehtlacameh. Ipan in huehuecahuitl Atliaca itech tlapouhtli catca on huei altepetl Tzompanco yehhan oquipachocoh mexihcah. Tzompanco quitlaxtlahuiliaya itlacaquil huei tlahtoani Moteuczoma Xocoyotzin: teocuitlatl ihuan tlahtohtin.



cuauhtli ihuan ocelotl

Nahuatlacameh ipan Yencuic Caxtillan

Nahuatlamachiliztli xotlan ihcuac ohuallah-queh caxtillantlacameh ipan 1519 xihuitl. Ipan 1521 Cortés opeuh tlanahuatia ihcuac yoquitlan on altepetl Tenochtitlan, mazqui macehualmeh melahuac nomanahuiayah. Zaquin, intlal aztecatlacameh oquitocayotihqueh Yencuic Caxtillan, zanpampa nahuamacehualmeh occeppa ocahciqueh innemiliz ipan iminaltepeuh. Quemman opeuh itlanahuatil Yencuic Caxtillan, macehualmeh ocahciqueh imintlanahuatil, queniuhqui tequitiyah ihuan queniuhqui quihuicayah innemiliz. Noiuhqui hueliyah quitequitiltiyah nahuatlahtolli ipan imaltepeuh, campa quihuellaliyah cualantli ihuan teopantzin. Ipehuyan xihuitl 1530, in macehualmeh opeuhqueh quihcuiloah nahuatl ica latintlahcuilolli. Incelti oquichiuhqueh ihuan otechcahuilteuhqueh miec amatl ihuan amoxtli yehhan tlin aman hueliz ticpohuazceh. Yaica hueliz ticmatizceh quen



Nahuatlacameh ipan Yencuic Caxtillan

catcah tohuehcatahuan, quen quihuicayah in-nemiliz, quen nomanahuiayah ihuan queniuhqui tlanemiliayah. Xnemih occequimeh macehualmeh ipan nochi Americah yehhan oquichih-chiuhteuhqueh miec tlahcuilolli; zan macehualmeh yehhan nahuatlahtoayah. Tiquixmatih miec yectli huehuehamatl yehhan quiztoqueh Guerrero quenon *Códice Azoyu* yehhan oquichiuhqueh macehualmeh niman ne oncah Tlapan altepetl. Ticmatih quipiyayah couhtic inaltepeuh ihuan intlahtoahcauh. Noiuhqui ticmatih tlin cualantli quipiyayah huan queniuhqui notlacoahuiliayah nozo notlanamaquiltiayah ihuan on huei altepetl Mexico-Tenochtitlan inhuan Caxtillan tlayecanqueh nican ipan in Yencuic Caxtillan.

Atliaca in Tonalli

Aman in calpan Atliaca tlapohualli itech on altepetl Tixtla, niman nocahua intlahcotiyan ome altepetl, Tixtlan ihuan Apango. Ipan on calpan chantih canah 7,439 tlacameh, zohuah in huan coconeh.

In tonalli hueli tiquittah ome teopantzitzim-meh yehhan tlayecantihtoqueh. Ce yehhan nocahua ne ipan on Barrio de San Francisco, campa in Zantoh itoca San Francisco. Niman occe yehhan oncah itlahcotiyan in calpan niman yehhan oca-chi ye huehuentzin. Ipan in teopantzin quimahu-iztiliah on Zantoh yehhan quihtoah ohualeuh neca hueiatenco niman yehhan itoca San Salvador.

In tonalli xoc cualli ticmatih quenuihqui melahuac itoca in calpan: miyequeh quihtoah quitl itoca "Atliacan", "Atlihyacan" nozo "Atliyancan". Yehha ica tehameh otitotehte-



quiuhthiqueh pampa ticmatiz-nequih quenuihqui melahuac itoca ihuan tlin quihtoznequi in calpan, niman oticnextihqueh ipan ce huehuehamoxtli yehhan oquihcuilohqueh ipan 1619 ihuan oncah ipan (AGN) Archivo General de la Nación, quen melahuac qui-

Atliaca in Tonalli



tocayotiayah tahuelohhuan.

Ipan in amatl hueli tiquittah ica in calpan qui-tocayotiayah Atliyacac, nozo Atliyacan, niman oti-ctlahtoltihqueh on tlacatzintli R. Joe Campbell ma techpohuili queniuhqui melahuac itoca in calpan. Yehha ica nocahua quinomachtia totlahtol niman cualli quimatzticah queniuhqui nochihchihua nahuatlahtolmeh. Yehha otechixtlaloltilih quen no-tocayotia niman quen melahuac itoca in tochan. Niman otechillih quitl tocalpan melahuac itoca Atliyacac. Noiuhqui hueliz ticnextizceh itoca in calpan ipan iamox Cecilio A. Robelo yehhan itoca *Nombres Geográficos Indígenas del Estado de México*, niman yehhan oquiz ipan on xouhtli 1900.

Tequitl Ipan Calpan Atliaca

In tonalli miyequeh Atliaca chanehqueh tequitih ipan tepetl campa quitocah tlayoltzintli, yetzintli ihuan ayohtli. Noiuhqui miyequeh huehuentzitzimmeh inhuan lamahtzitzimmeh notlahtlaliah quichihchihuah impetl. Ahueh tlin melahuac quimmaca tomin tocalpan on tabiquehchihchihualiztli, ipan in tequitl cemi miyequeh tlacameh tequitih, niman noiuhqui miyequeh quimihtzomah on ahuiltapayoltin.



Tequitl Ipan Calpan Atliaca



Tequitl Ipan Calpan Atliaca

Ipan in calpan oncah ome huei ilhuitl yehhan on Atliaca chanehqueh quihueichihuah: Quinto Viernes de Cuaresma ihuan Atzahtziliztli.

Quinto Viernes

Ipan on ilhuitl Quinto Viernes quilhuichihuiliah on San Salvador, ce Zantoh yehhan quih-toah hualeuhticah neca hueiatenco. Ipan in ilhuitl nemih miyequeh nihtotihqueh, quenon: Xehectin, Ayotzitzimmeh, Pastoras, Tlacoloreros, Chinelas niman occequimeh. Ichan on teopantlayecanqui quimictiah ce huacax yehhan nocua on tonalli. Ipan in ilhuitl nochi tlacatl hueli yauh ontlacua ichan on teopantlayecanqui.

Atzahtziliztli

In ilhuitl zanceppa ocachi huei quihtohticah niman pehua ihcuac cominnamiquih on Chilpancingo chanehqueh ipan 30 de abril. Niman hualmoztla ipan 1 de mayo miyec tlacatl tlehcoa ipan

Tequitl Ipan Calpan Atliaca

ce tepetl azta campa ahci ne Oztotempan campa nochihua on Atzahtziliztli. Ipan in ilhuitl yehcoh miyequeh calpammeh, quenon: Tixtla, Chilpancingo, Apango, Acatempa, Huitziltepec, Zumpango, Tlanecpatlah niman occequimeh altepemeh.

Ihcuac ye tlayohua ne Oztotempan miyequeh nihtotihqueh nihtotiah, tlacualchihualo, quintequih mexcaltin yehhan ica quinchihchihuah on chitahmeh. Quimihticoyoniah niman ihtic quitlaliah nochi on huentli yehhan onnoxinizeh hualmoztla, niman noiuhqui tlamanalo ihtic on teopantzin yehhan ompa oncah. Hualmoztla on Atliaca teopantlayecanqui inhuan on tlatzotzonqueh pehuah quincenlaliah nochimeh on chitameh yehhan oquinchihchihuhqueh on occequimeh altepemeh. Quiyehualoah on oztotl ihuan on teopantzin, niman zaquin pehua notecpanah itenco on oztotl campa ce huehuehyotl cominxiniz. On huehuehyotl pehua tlatlatlauhtia niman pehua quinnotza on ahuahqueh niman on tonaltequihuah pampa ma quihualtitlanican on atzintli yehhan nonequi pampa tocaloz. Niman

Tequitl Ipan Calpan Atliaca

ihcuac yotlan tlatlatlauhtia on huehuehyotl pehua cominxinia on chitahmeh niman on huexolomeh inhuan piyomem. Ihcuac yotlan ontlaxinilo ihtic on oztotl, on huentlacualli yehhan ocalacca ne teopantzin pehua quixtiah niman pehua noxeloa, niman quimacah nochi tlatcatl yehhan quinequi. Intla yotlan noxexeloa on huentli, pehua tlayehyehualo niman pehua hualtemolo. Hualtemoa on colotzin yehhan oquiz ne calpanteopan. Ihcuac ye teotlac, miyequeh Atliaca chanehqueh pehuah nohhuitemah azta ne campa itoca Teaxixco pampa conchiyah on colotzin yehhan otlehcoc ne Oztotempantzin. Ipan in tlanamiquiliztli yauh zaquen nochi tlatcatl yehhan catolicoh.

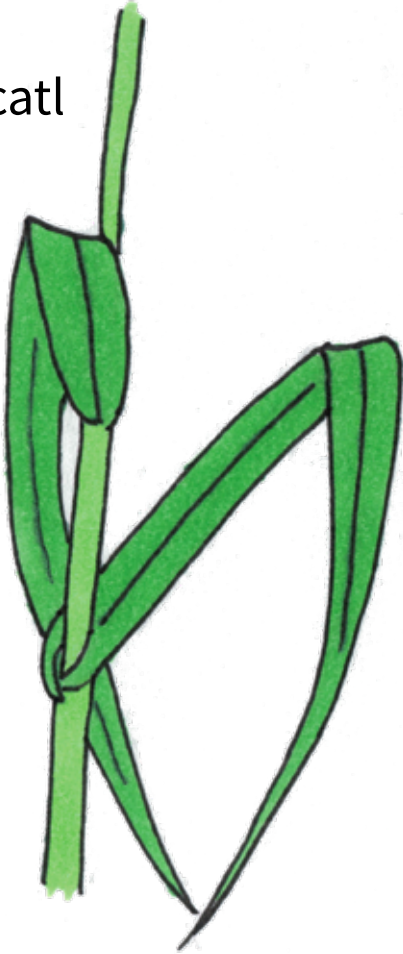
Tequitl Ipan Calpan Atliaca

chitahtli

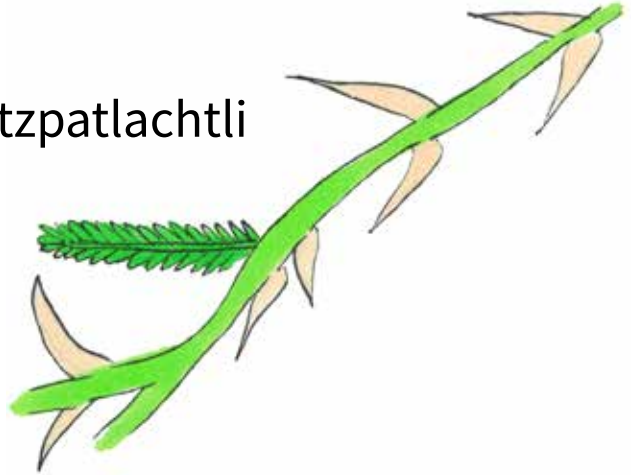


Couhtitlan

acatl



huitzpatlachtli



coyozoyacouhtli



couhtli

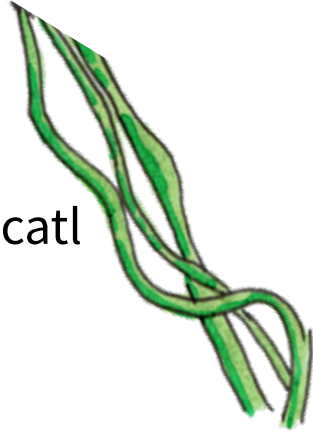


huitztli



Couhtitlan

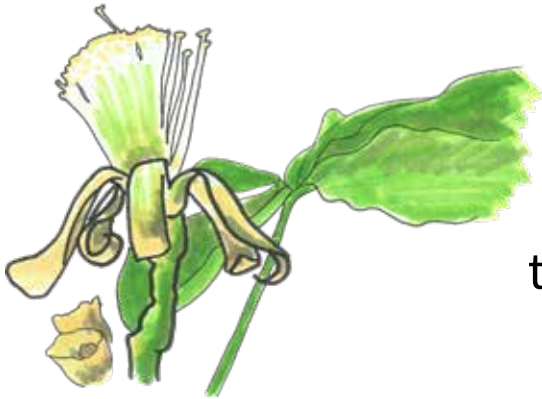
cuammecatl



couhtitlan



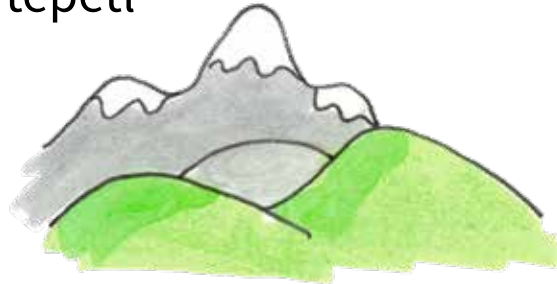
chiloxochitl



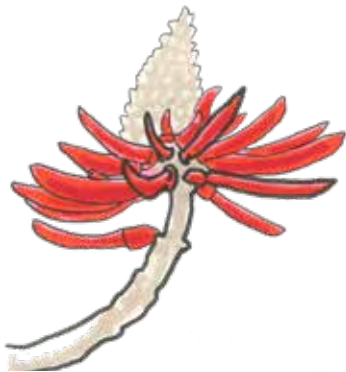
tetl



tepetl



tenchichilotl

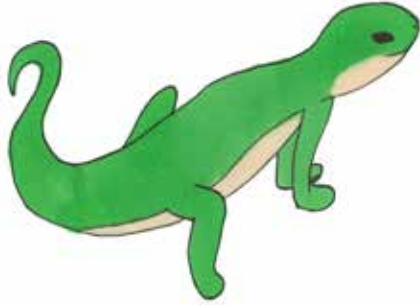


tzitzicaztli

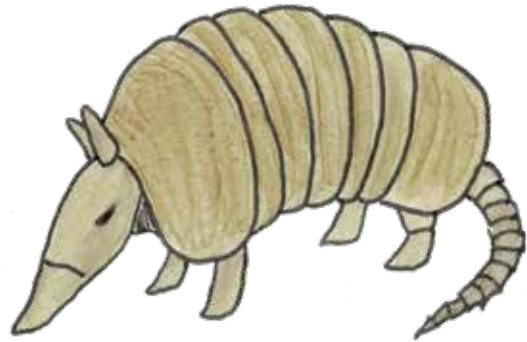


Tecuanimeh

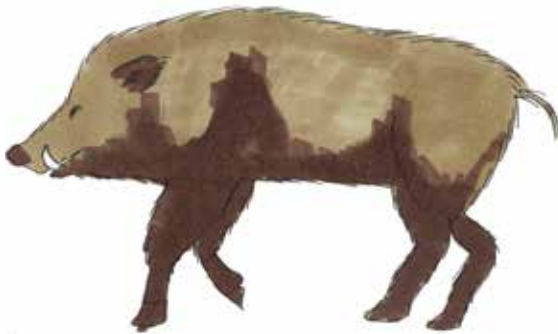
techihchicotl



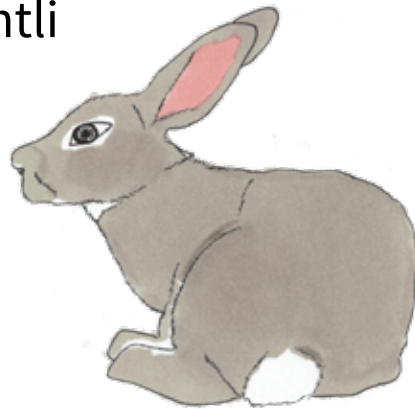
ayohpitzo



cuappitzo

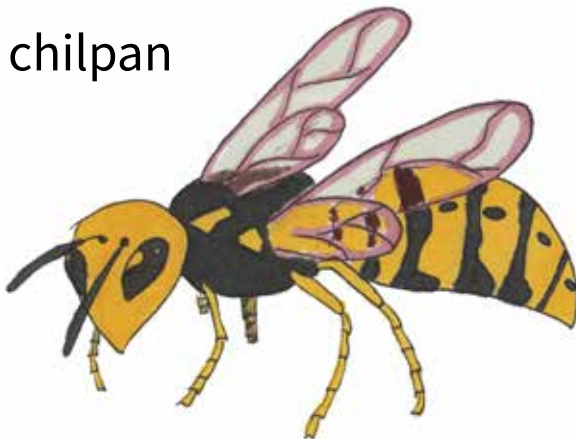


tochtli



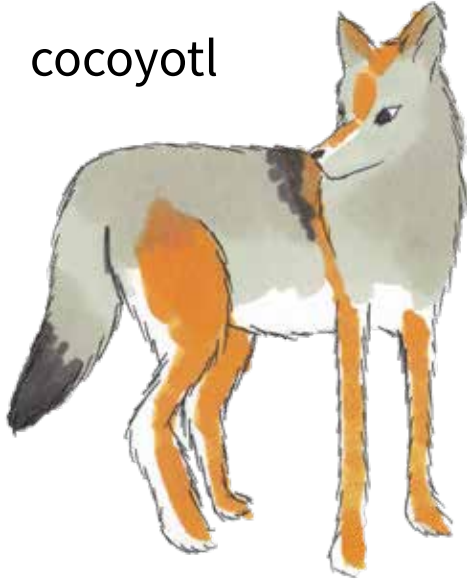
coatl

chilpan



Tecuanimeh

cocoyotl



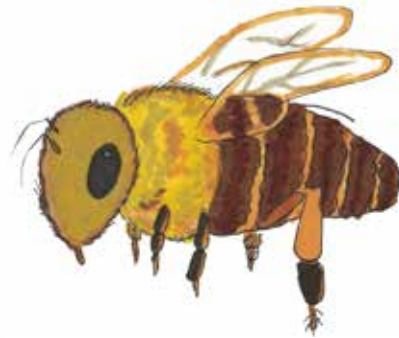
tlacuatzin



mapachin



neuctzin



oztotzin



zacamiztli



cuappintli

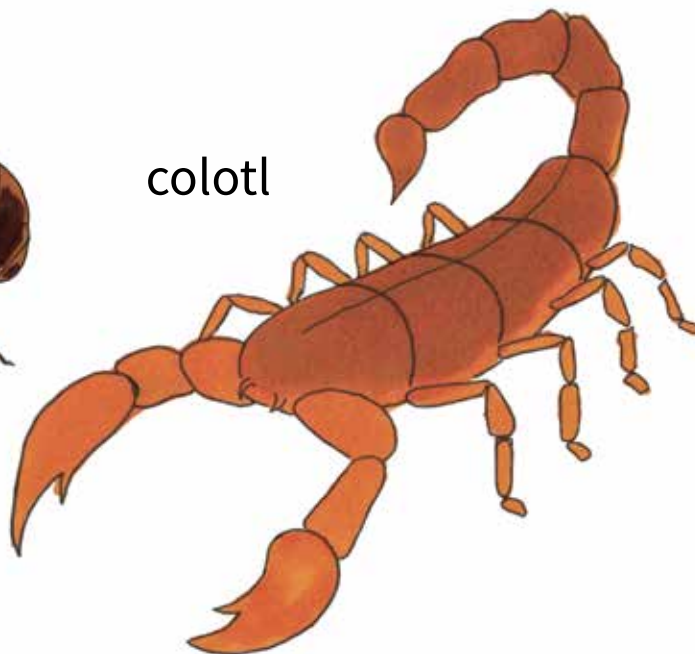


Yolcatzitzimmeh

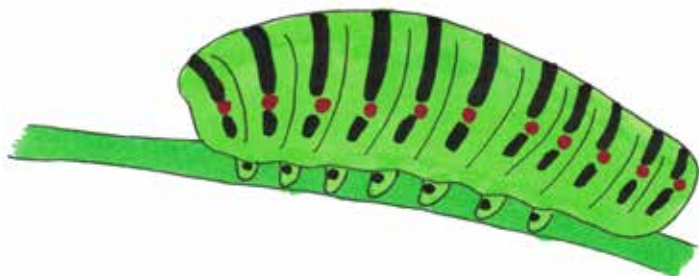
tzicatl



colotl



ocuilin

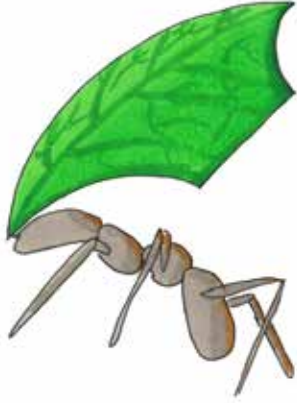


papalotl



Yolcatzitzimmeh

tzontetl



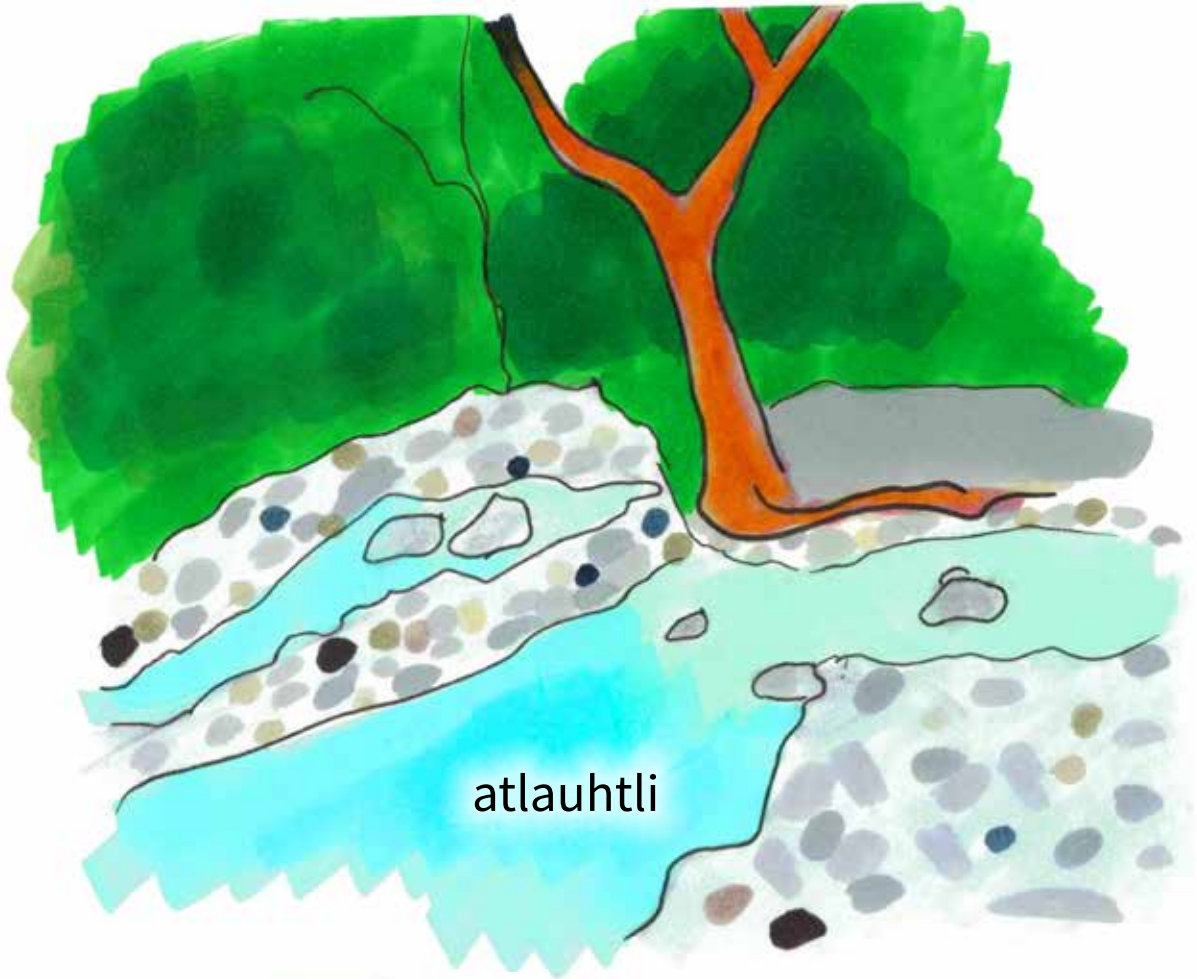
tocatl



tlalcontocatl



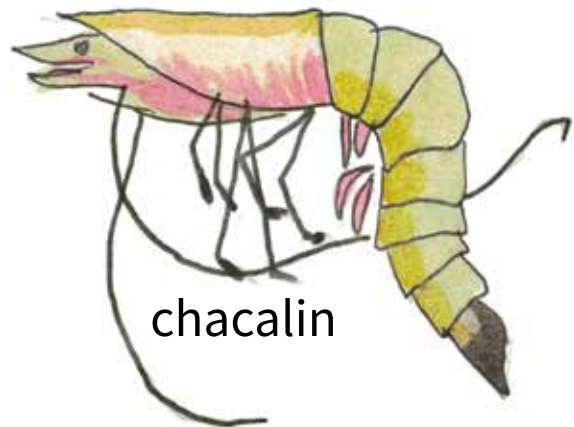
Atlauhtli



atlauhtli



ayotzin



chacalin

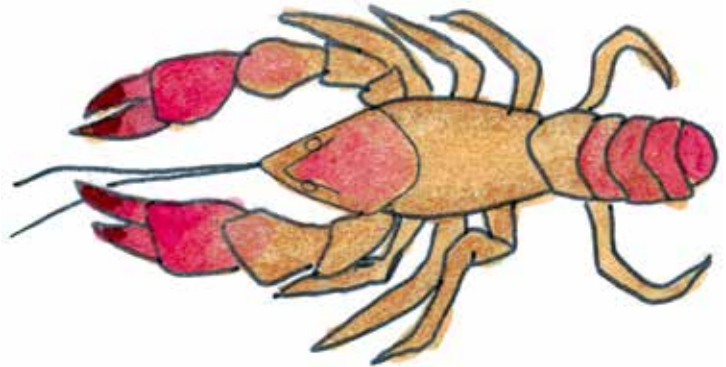


tecuicilin

Atlauhtli

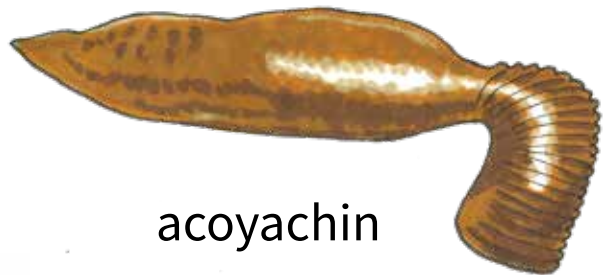


acuacuatl

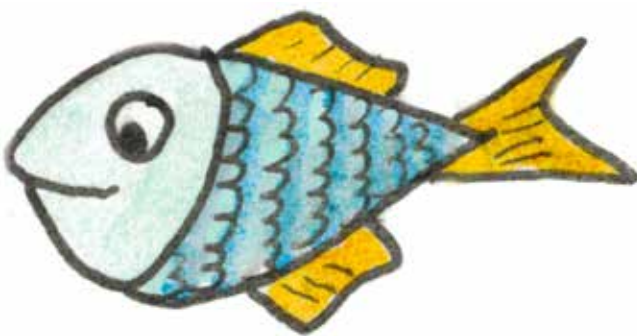


acolotl

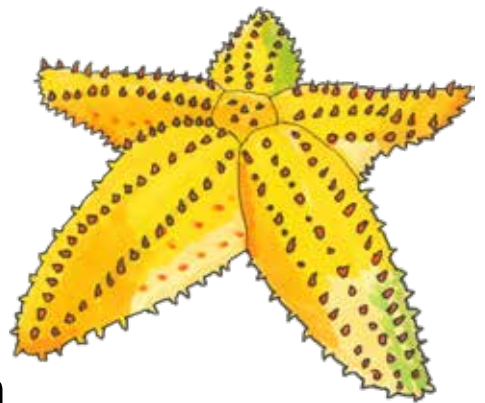
michpapalotl



acoyachin

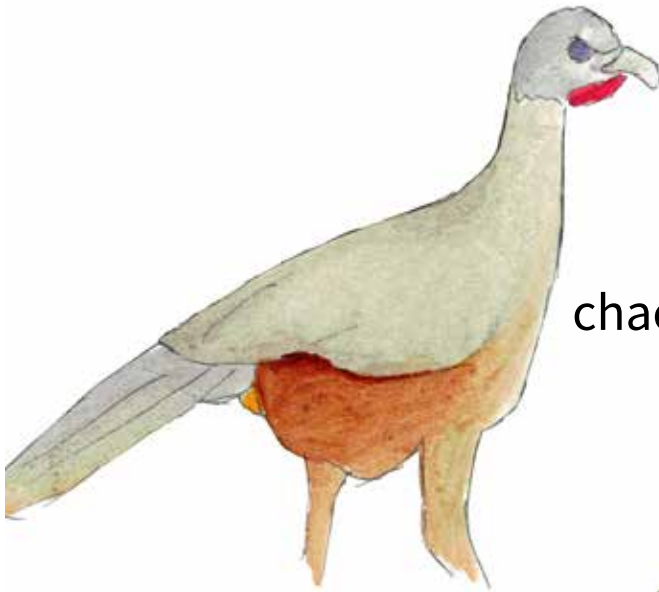


michin



acitlalin

Totomeh



chachalaca



chiltototl



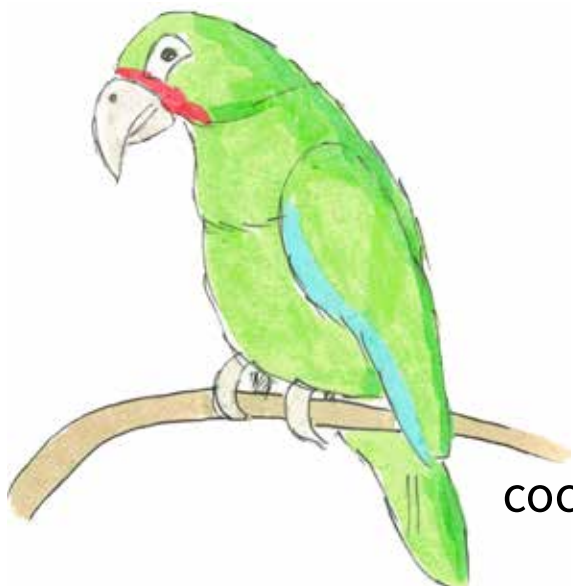
atototl

Totomeh

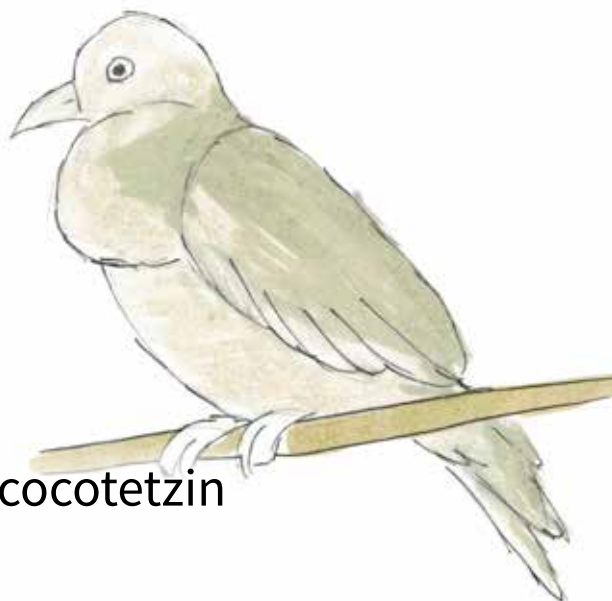
cacalotl



cochotl



cocotetzin



Totomeh

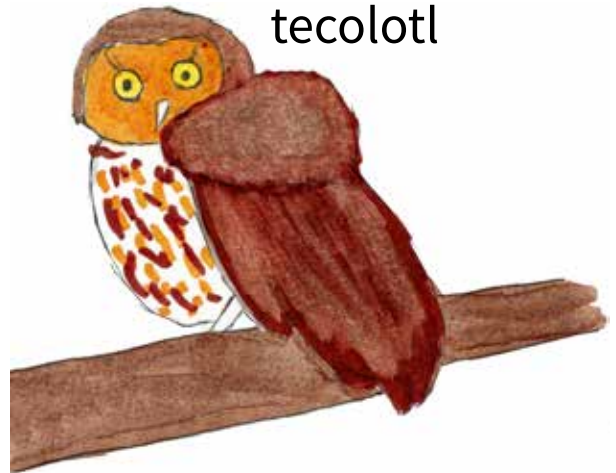
couhtzotzopitztototl



nacaztlantetzotzol



tecolotl



tohtli



tlapayauhtototl



Totomeh

huihuihtzacatl



huilotl



lahtohcatototl



tectototl



cuixin



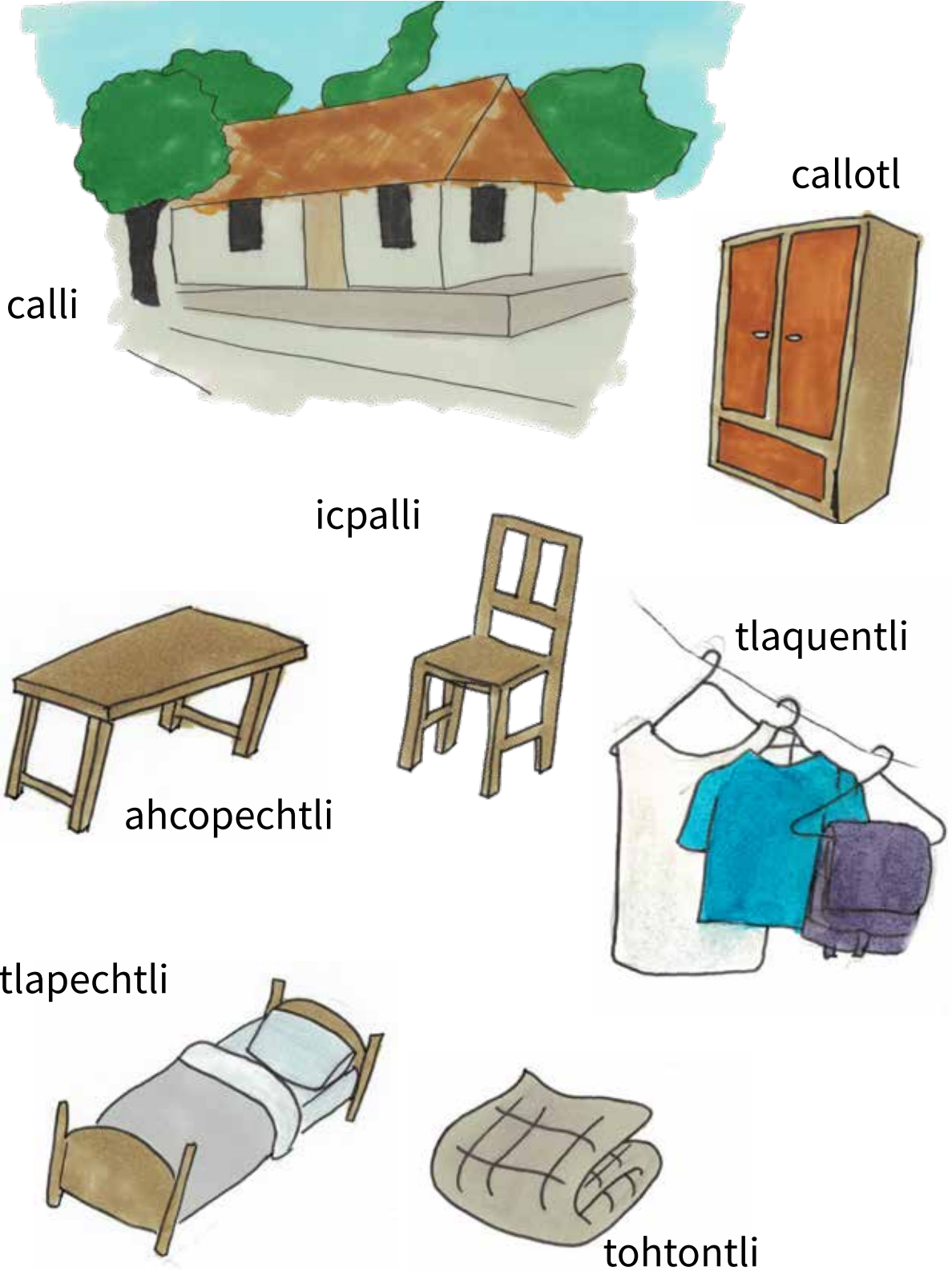
zanatl



axohquen



Calihc



Calihcic

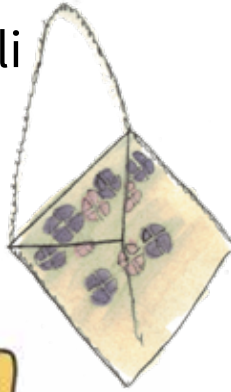
cuehtomatl



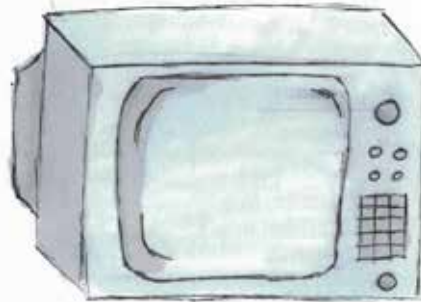
ixcopincayotl



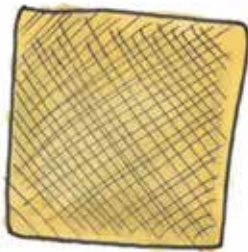
xiquipilli



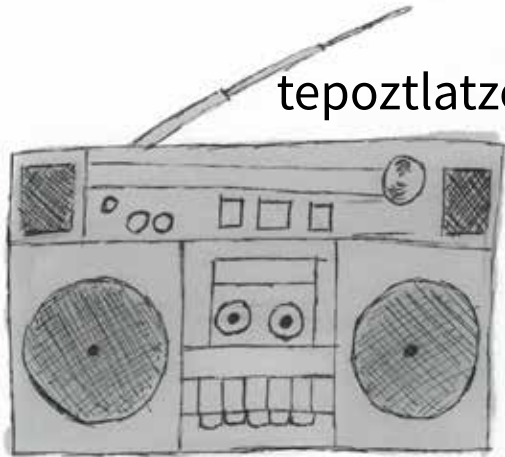
tepoztlamahuzolli



petlatl



tepoztlatzotzonalli



netezcahuiloni



Tlaixpan

tlahuilli



ahcopechtli



xochicozcatl



copalli

popochcontli



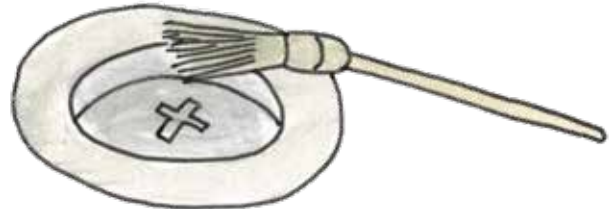
xochicontli

Tlaixpan

tlaixcaltohtontli



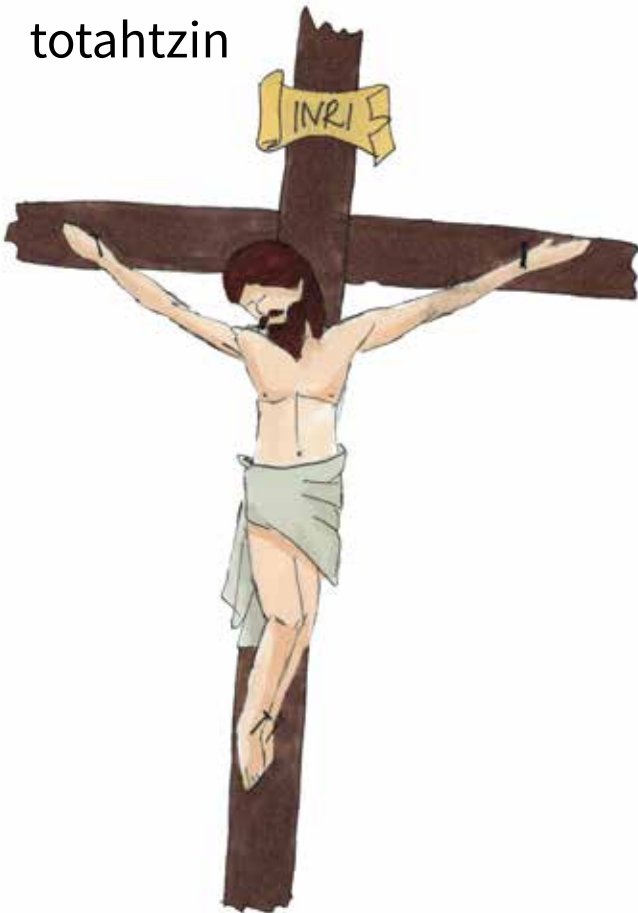
tlateochihualatl



tonantzin



totahtzin



Tlamantin tlin ica tlacualchihualo

huahcalli



temoltzin



contli

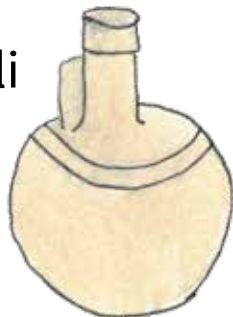


molcaxitl

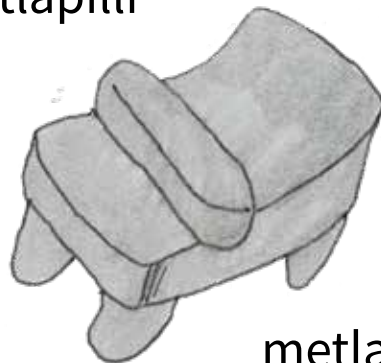
tlaxcalchihualoni



tzotzocolli



metlapilli

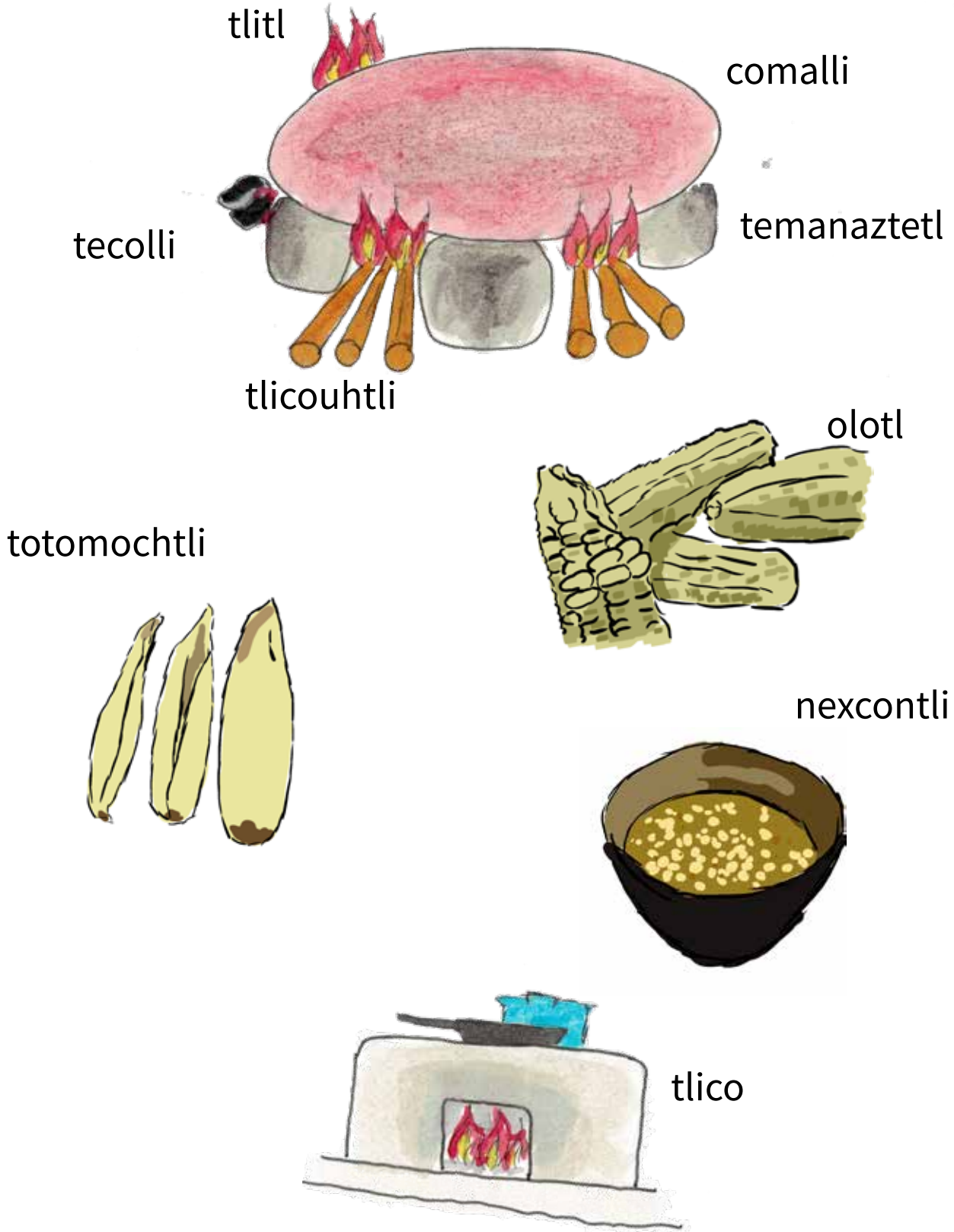


cuexomatl



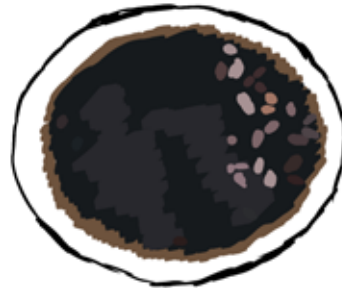
metlatl

Tlamantin tlin ica tlacualchihualo



Tlacualiztli

apozonqui



chichiltamalli

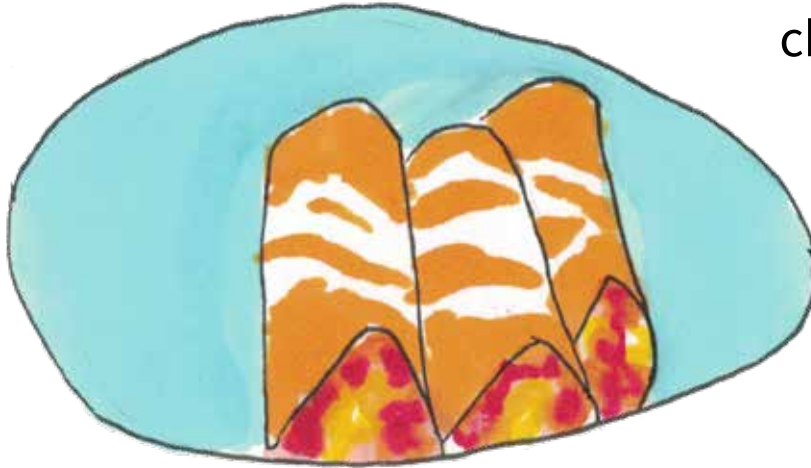


yelotl

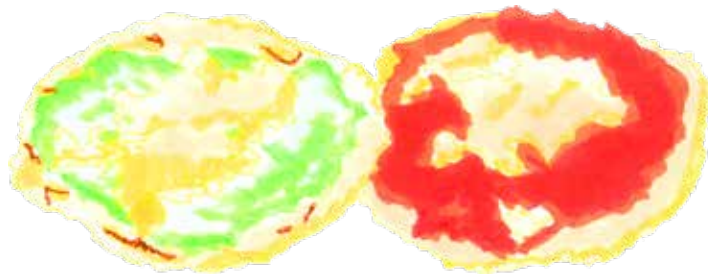


chilmolli

Tlacualiztli



chilaquilli



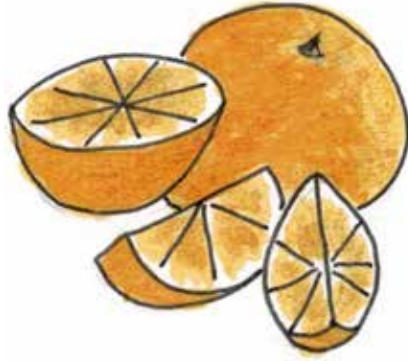
memela

yelotlatlihuatzli

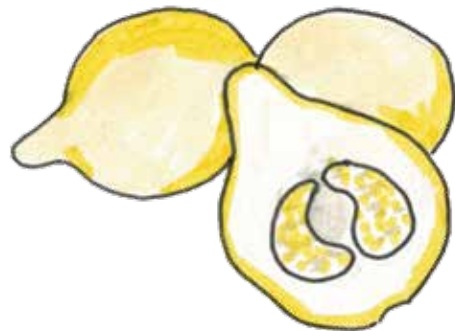


Couhtlaquillotl

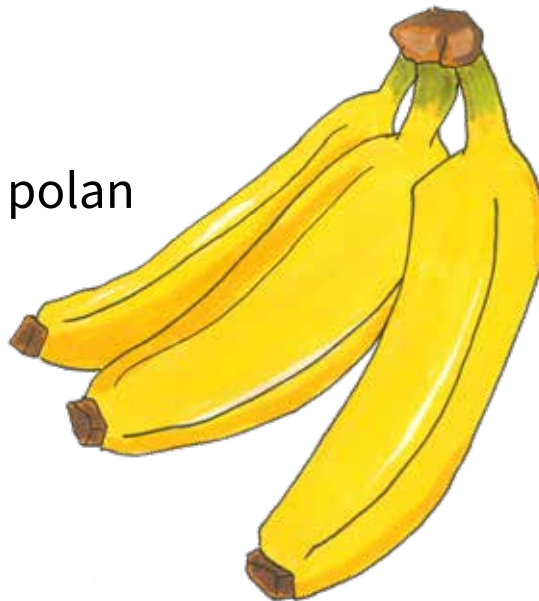
cahyel



xalxocotl



polan



Quiyahuac

xouhtli



tetl



zacatl



couhtin



xochitl



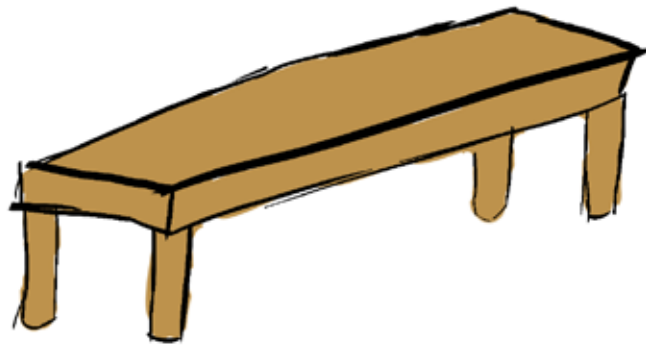
Calpan

cuachichi



cuachichi

tlacpalli



Calpan

mecatl

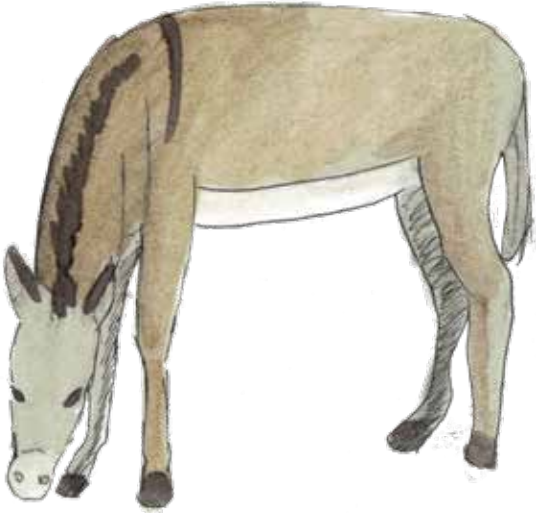


tlachpanhuaztli



Calpanyolqueh

polocotl



ichcatl



cahuayoh

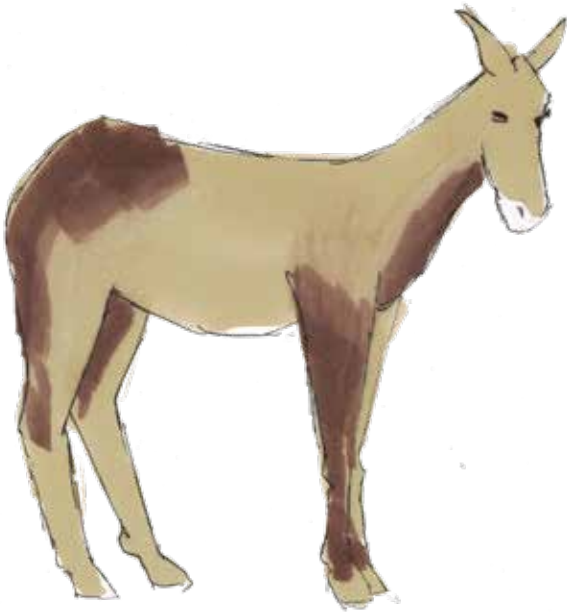


chito

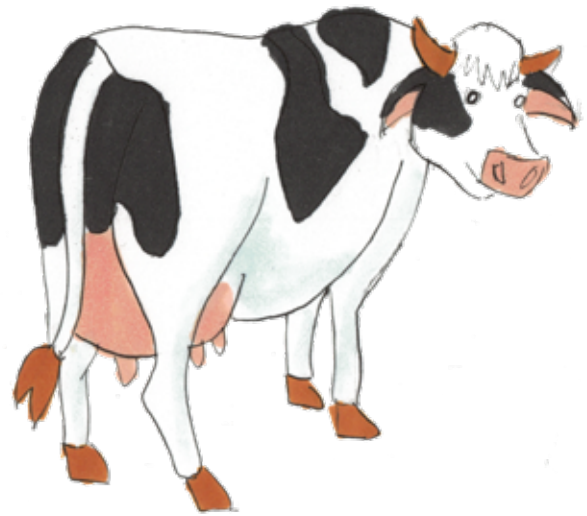


Calpanyolqueh

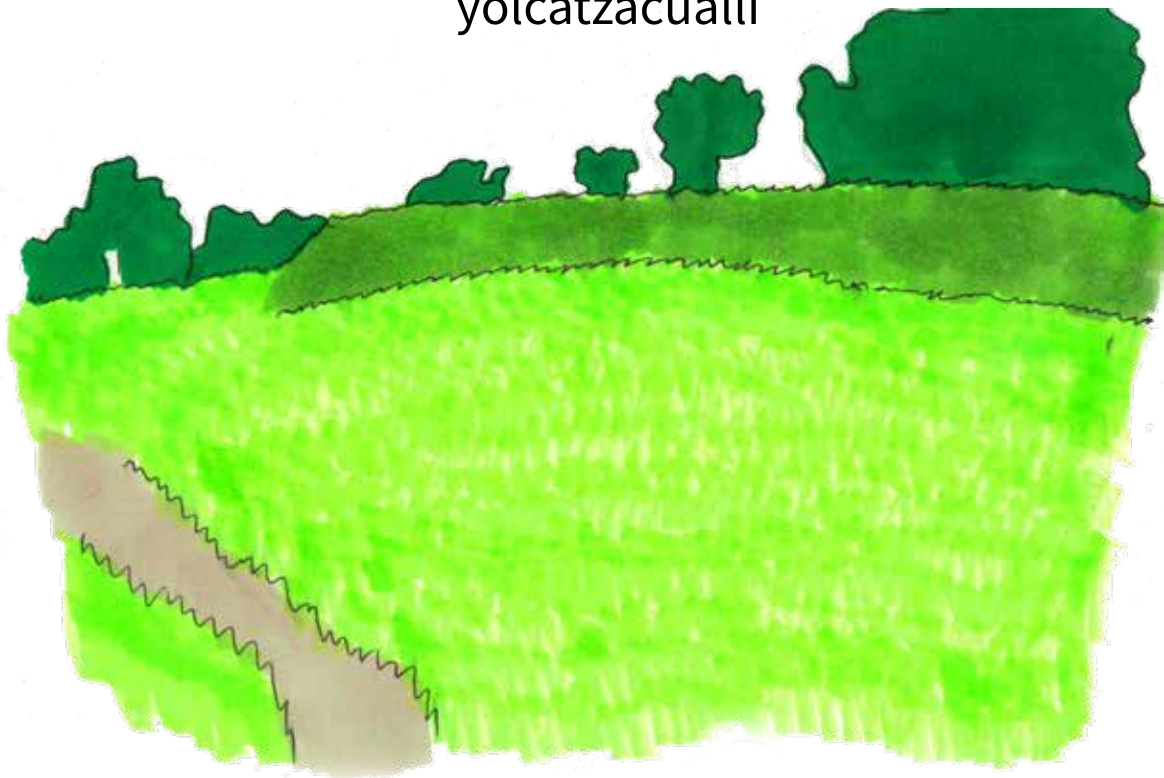
machoh



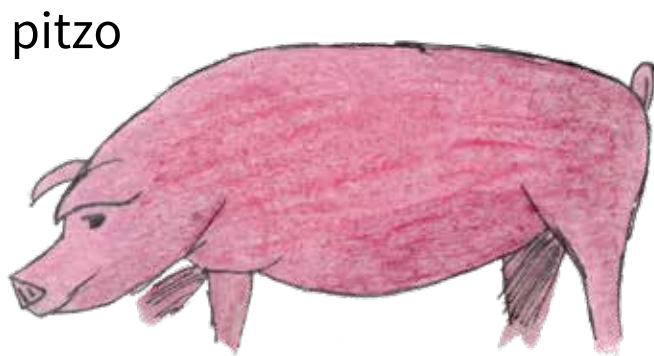
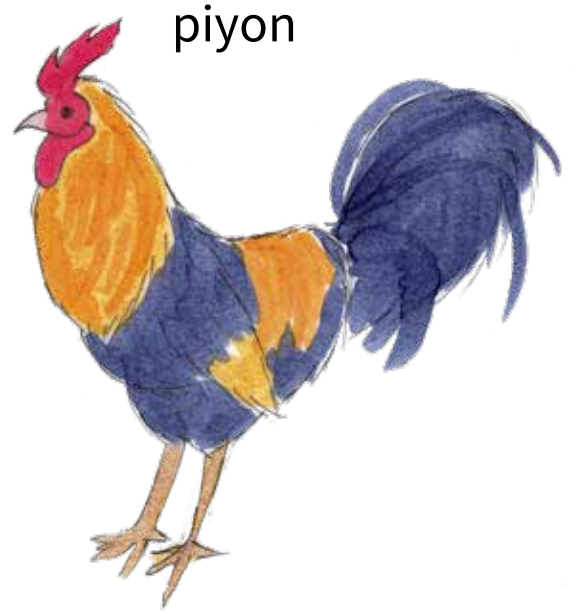
huacax



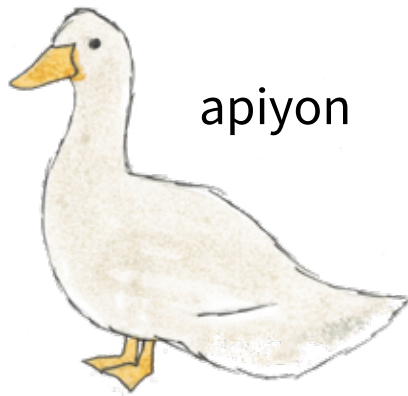
yolcatzacualli



Calpanyolqueh



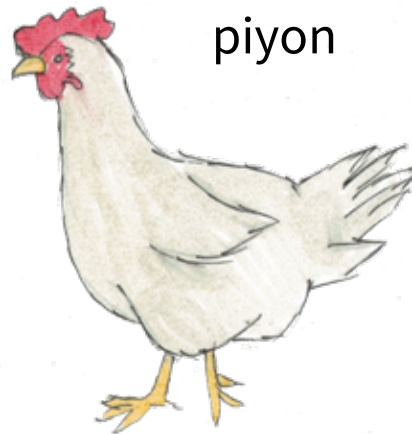
Calpanyolqueh



apiyon



piyontzin



piyon

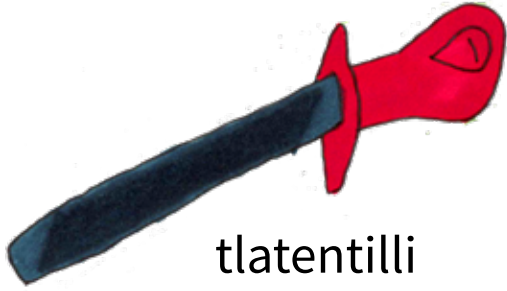


cuanaca



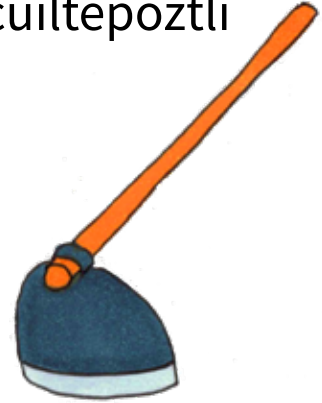
totolin

Millah

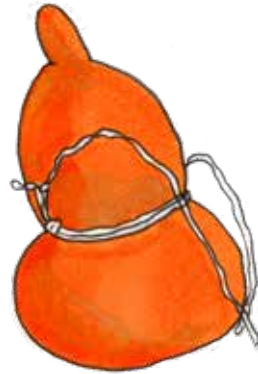


tlatentilli

tlacouhxocuiltepoztl



tohcopehtli



atecomatl



tepozmactli



tepoztlalpichihquetl



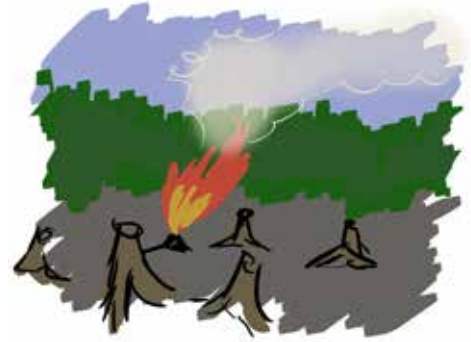
huitzoctli

Millah

couhtequi



tlahchinoa



tlacouhxouhcui

toquitztli



pixca



cinzaca

Cintli ipohual

tlaxoponiliztli

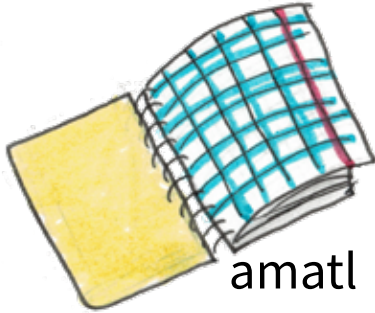


Cintli ipohual

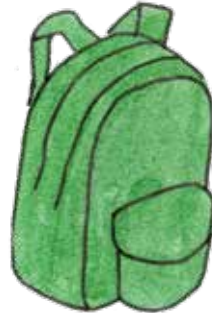


pixquitl

Tlamantin tlin nocuih caltlamachtilyan



amatl



amoxxiquipilli

amoxtli



chantequitl

tlapopoloni



tlahcuiloliztli



tlachihchihualtequitiyantli

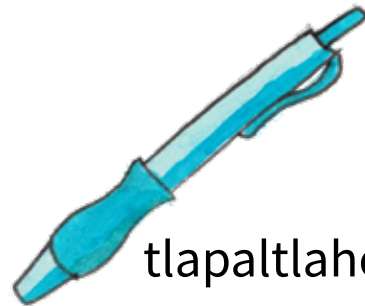
Tlamantin tlin nocuih caltlamachtilyoyan

tlapohualiztli



tlacuayacaximaloni

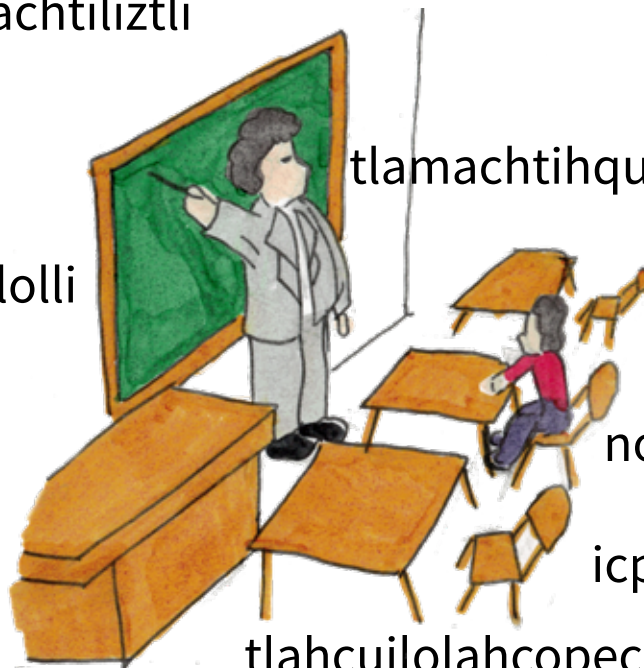
mahuiltiliztli



tlapaltlahcuilolli

tlamachtiliztli

huapaltlahcuilolli



tlamachtihquetl

nomachtihquetl

icpalli

tlahcuilolahcopechtli

Toteixmatcahuan

achcoltin

achcihtli



achcolli

coltin

cihtli



colli

tatahtin

nantli



tahtli

ixhuiuhtin



icniuhtli



tlacaicniuhtli

ihuan zohuaicniuhtli

Toteixmatcahuan

ahuitl

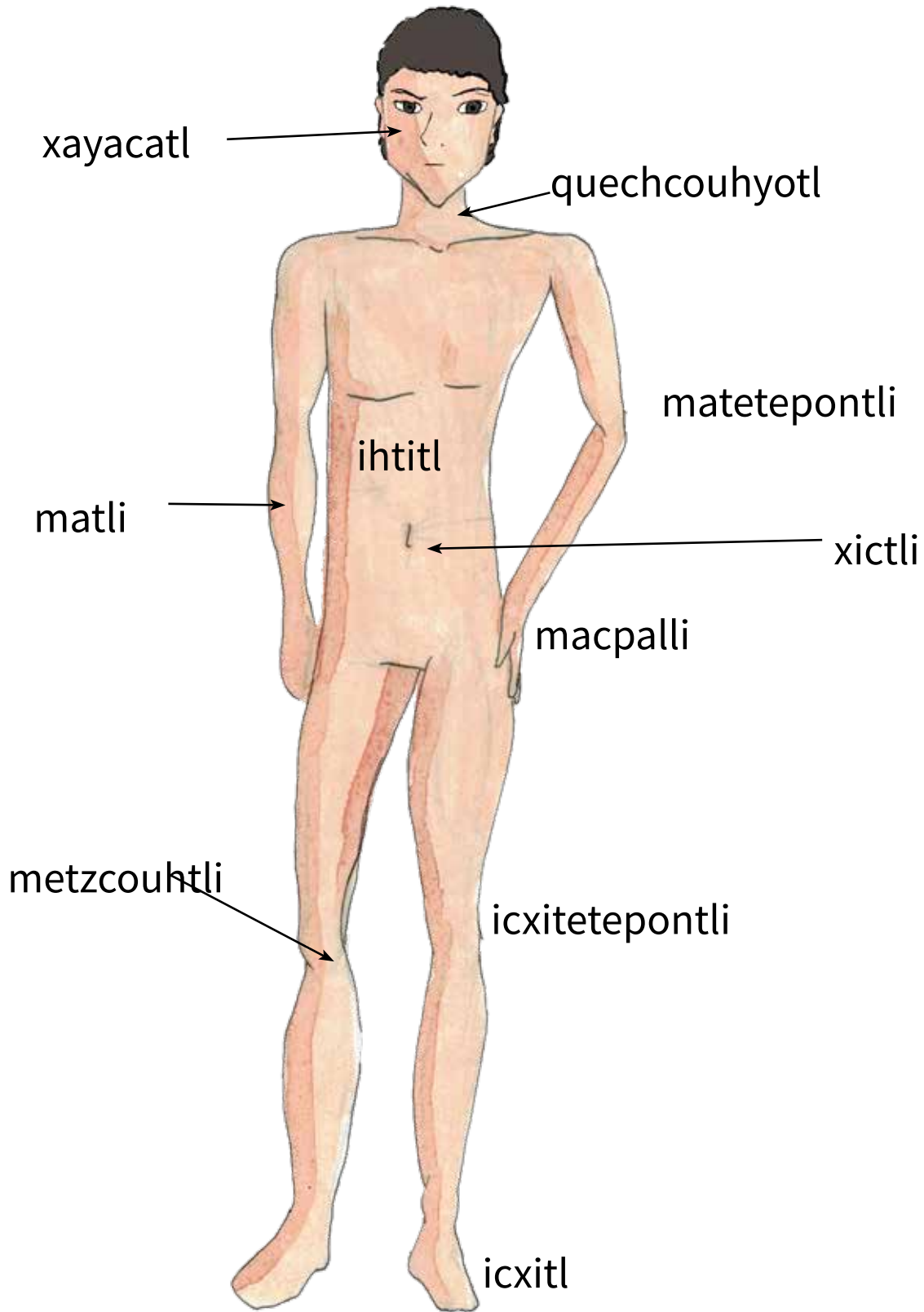


tlahtli

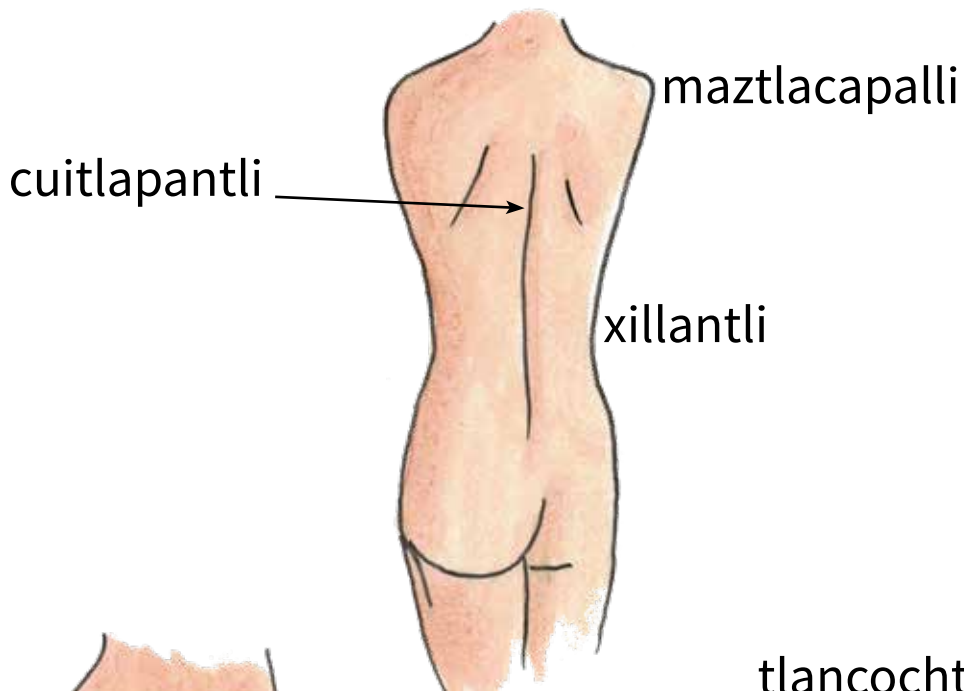
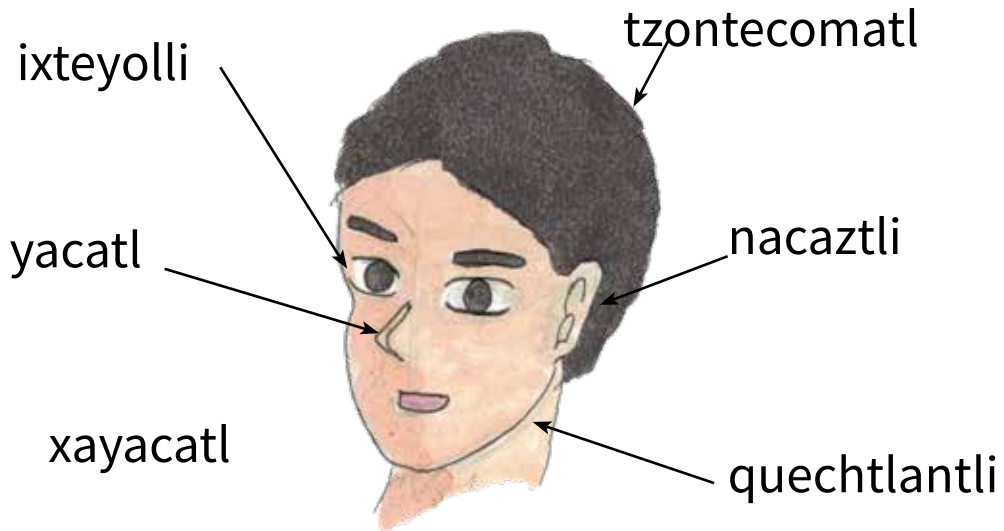


huehcazohuaicniuhtli ihuan huehcatlacaicniuhtli

Totlacayo



Totlacayo



tlancochtli



Tlaquentli

zohuatlaquentli



cuētlī

cuētlī



Tlaquentli



tlaquentli mahuehueyac

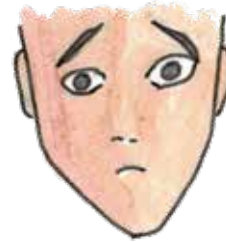
pantalontli

Quen quimati toyollo

yolahci



ahmana



yolpaqui



cualani

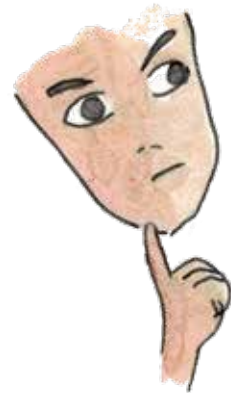


Quen quimati toyollo

choca



tlalnamiqui



tlahueleh



huetzca



Cocoliztli

cualo



totoniya



nococoa



tlatlaci



ihzotla

Cocoliztli

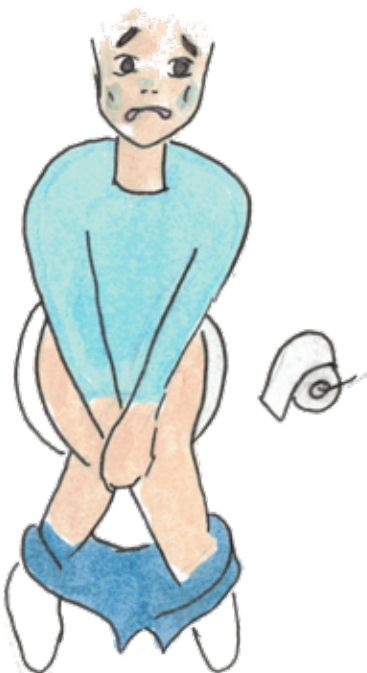
cuaixihuinti



cahcalaqueh



tlanocuilli



yelmoyahualiztli



Nahuiliztli

tenehnexiliztli



tetotaliztli



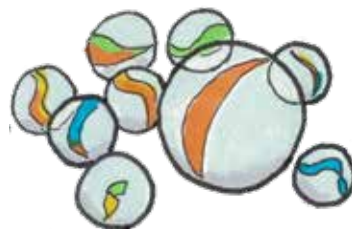
couhtlehtlehcolli



malacachahuilli

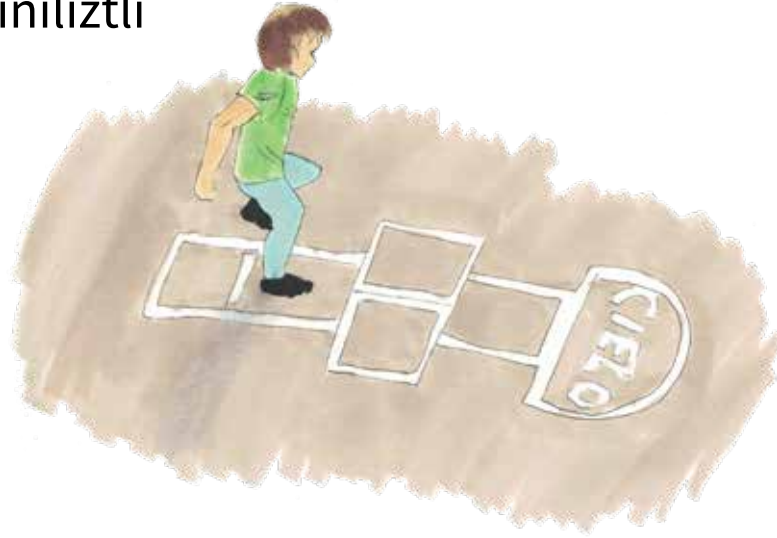


ahuiltololohtli

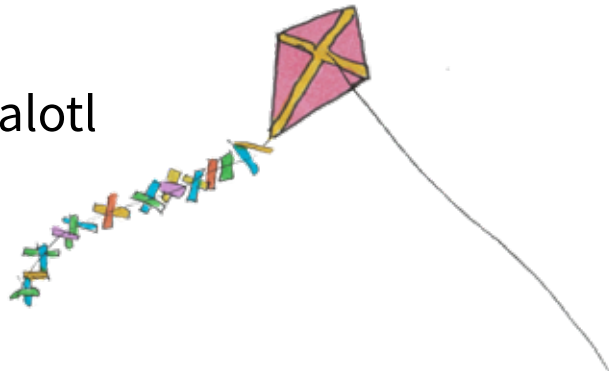


Nahuiliztli

tzihtzicuiniztli



amapapalotl



cahcalli



cohconetl



Ilhuicatl

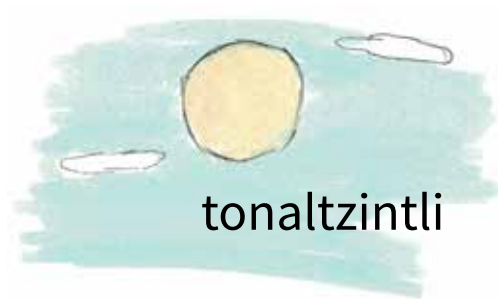


ilhuicatl

citlalin



metztli



tonaltzintli



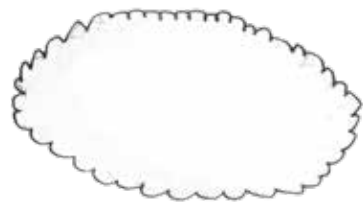
citlalcueyeh



cahuitl



moxtli

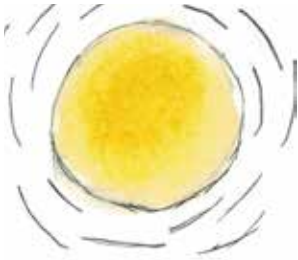


Ilhuicatl

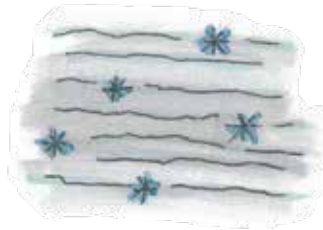
tonalcualoliztli



tona



tlaceceya



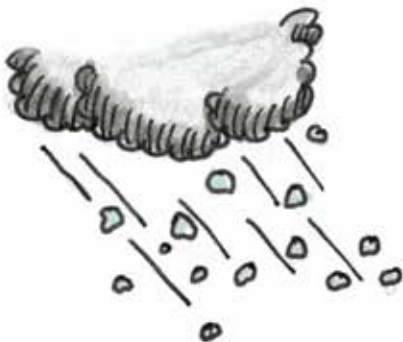
ahaca



quiyauhtli



teciuhtli



tlahhuichquiyahui



Oztotempán Atzachtziliztli

chitahtli

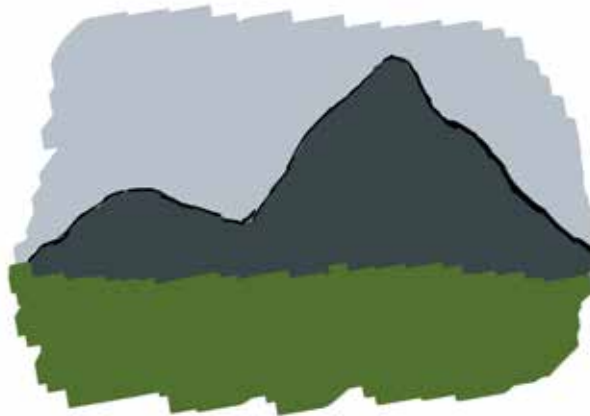


ilhuitl

Oztotempán Atzachtziliztli



xehectin



tepetl



tlamanalli

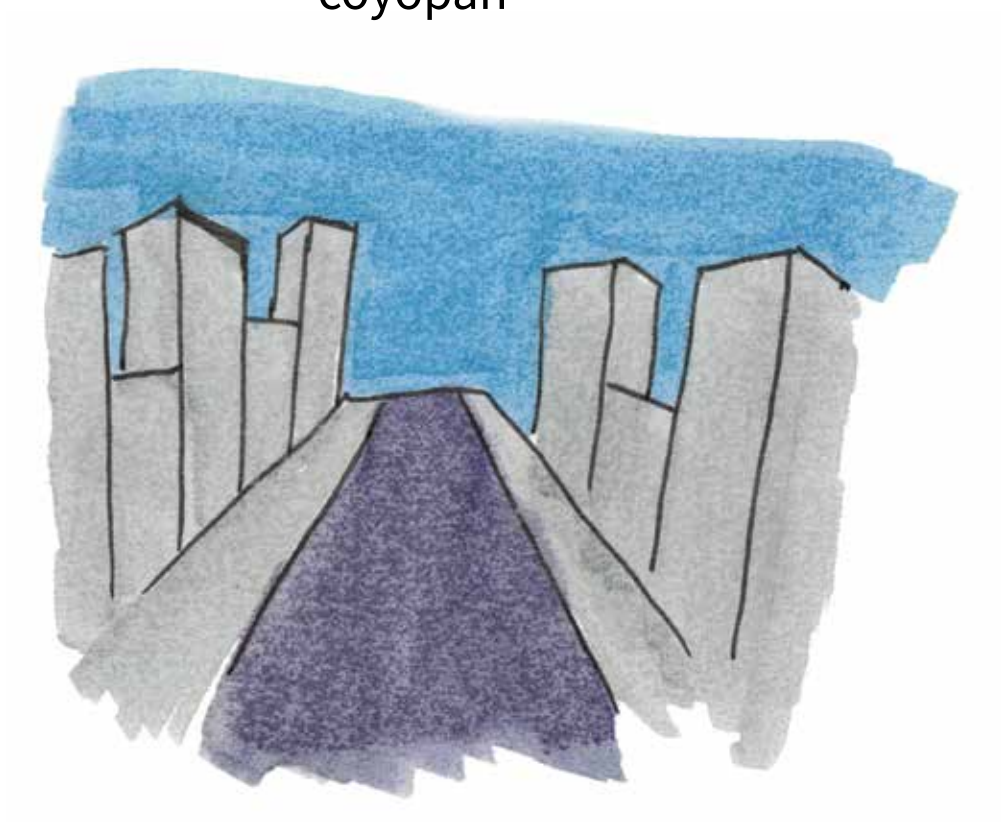
Campa tichantih



calpan

Campa tichantih

coyopan



Tequihuahqueh



tequihuah



huei tequihuah



necentlaliliztli

Tequihuahqueh

ceppantequitl



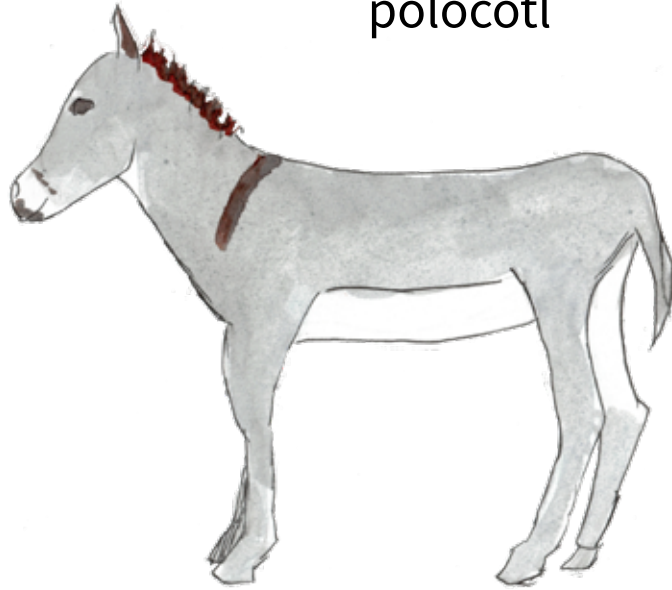
tetlaxtlahuiliztli

topileh



Tlin techhuica canah

polocotl



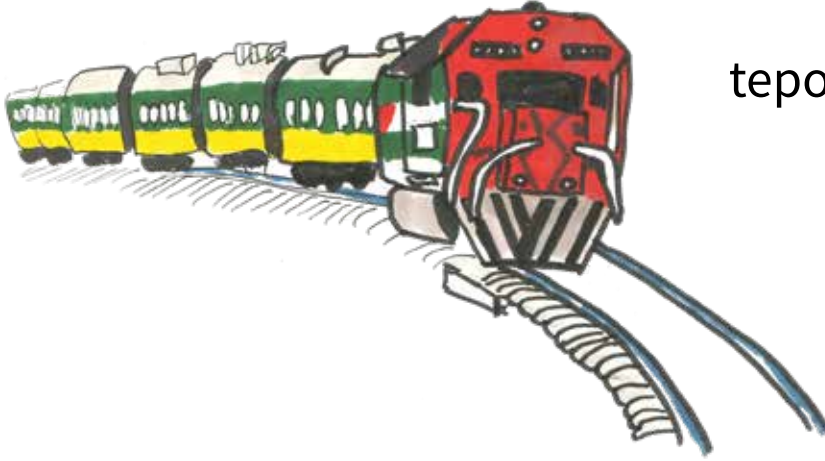
cahuayoh



molah

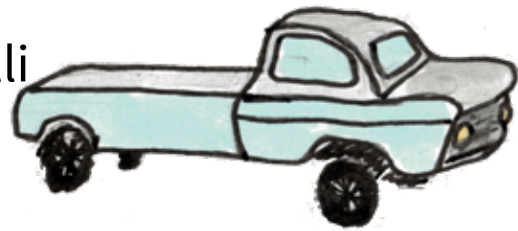


Tlin techhuica canah

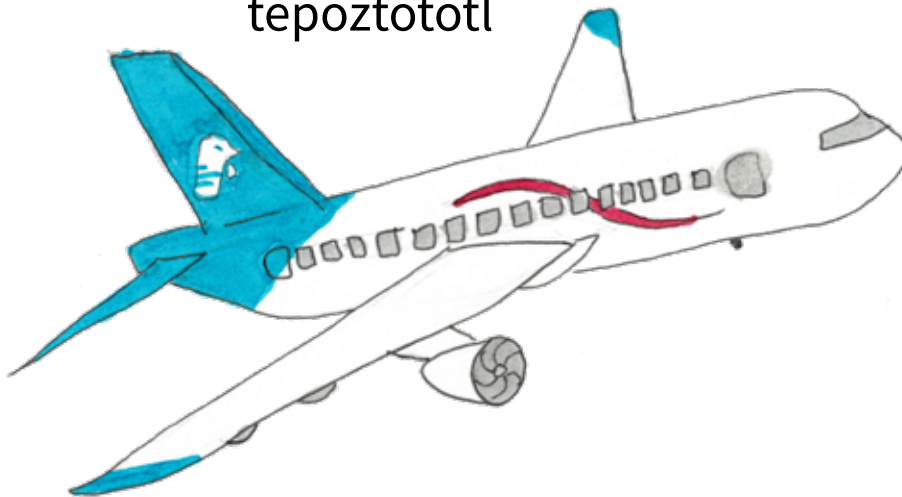


tepoztlahuilanalli

tepoztlanehnemitilli



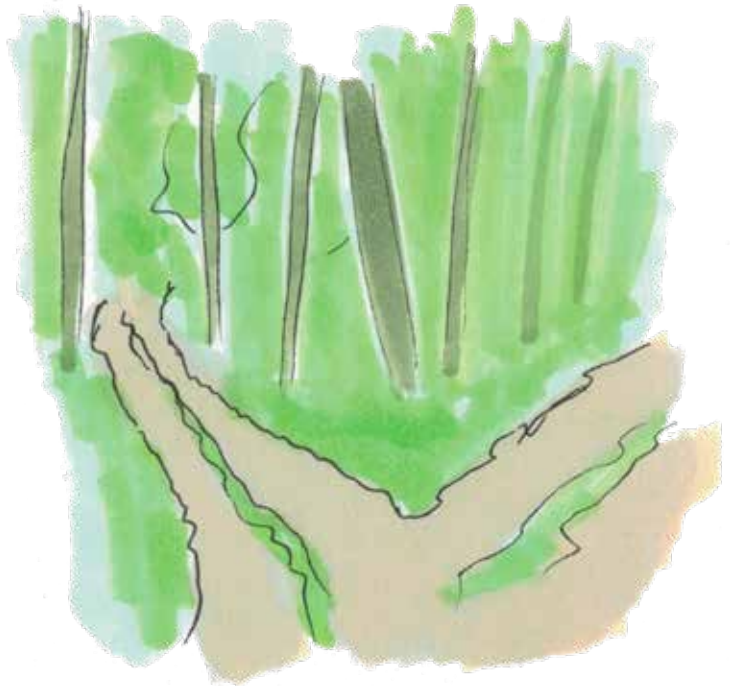
tepoztototl



Ohtli



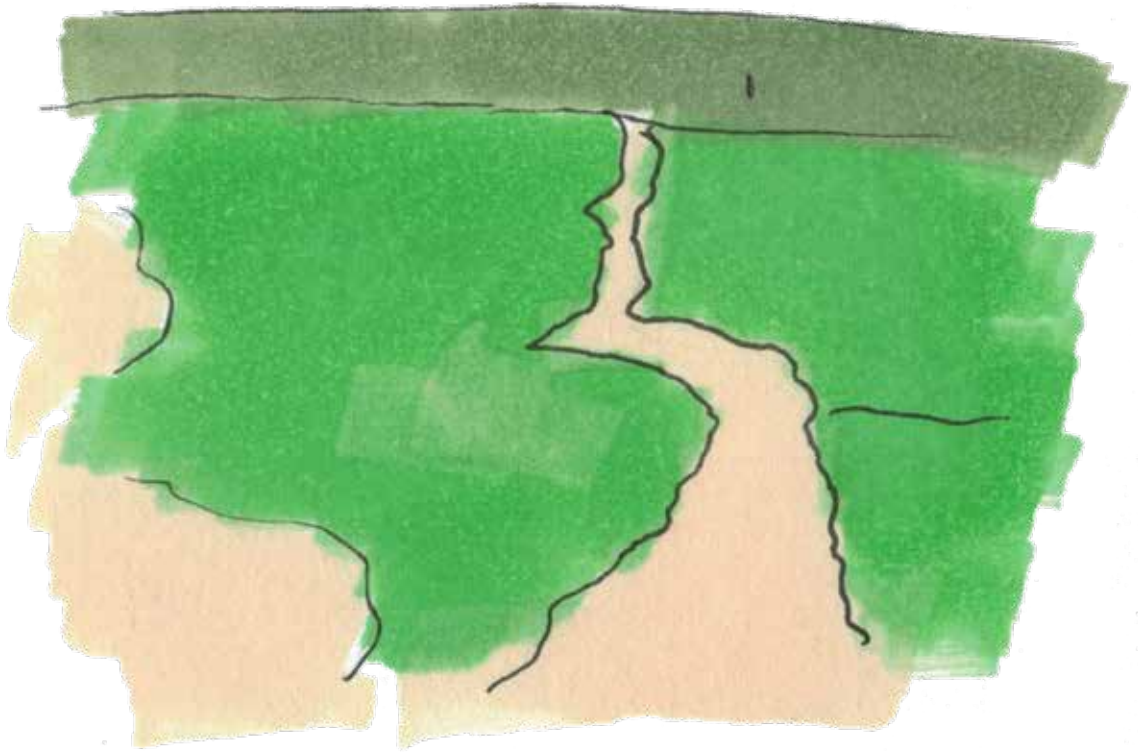
hueiohtli



ohmaxalli

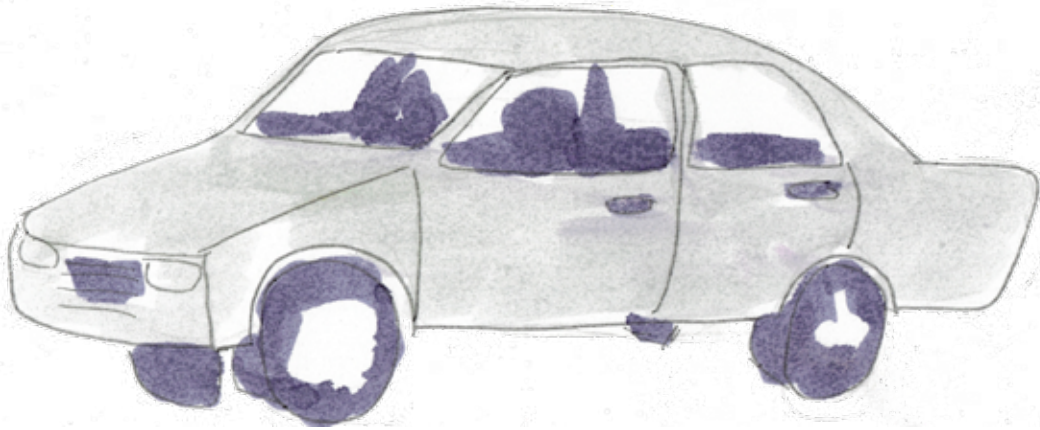
Ohtli

ohtli

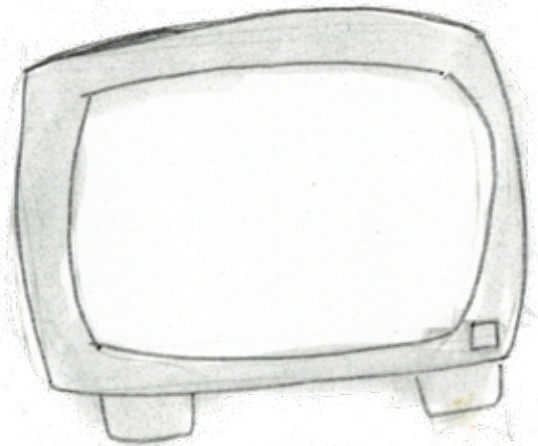


Yencuic tlahtolli

tepoztlanehnemitilli



tepoztlamahuizolli



caltlamachtilyan

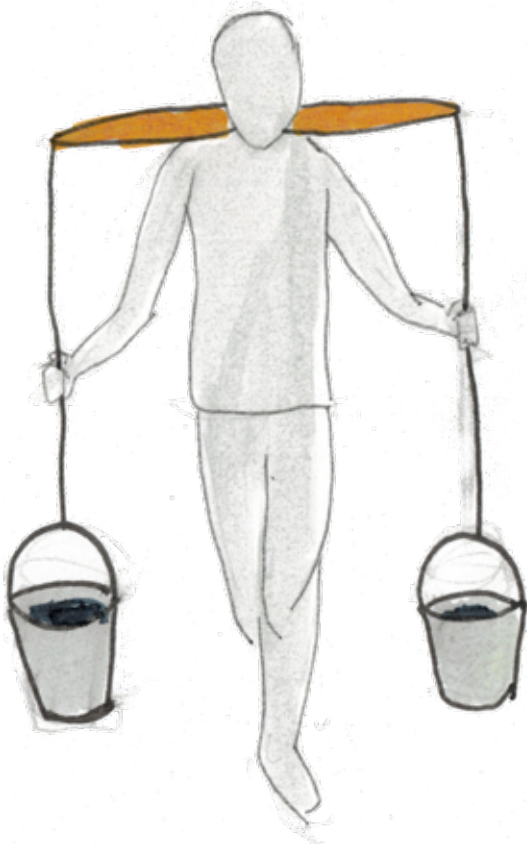


Yencuic tlahtolli



tzopelatl

tlamamalcouhtli



tlacuayacaximaloni

tolixtli



Huehcatlahtolli

hueixiquipilli



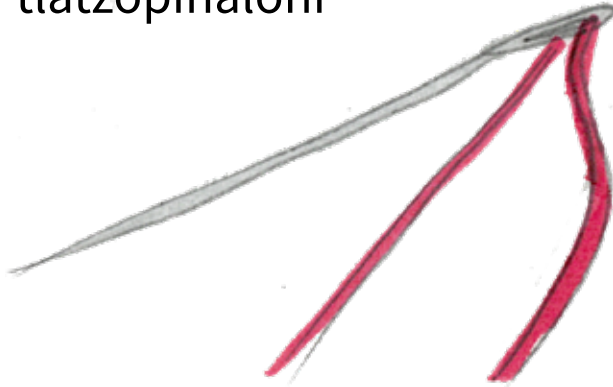
quechtecomatl



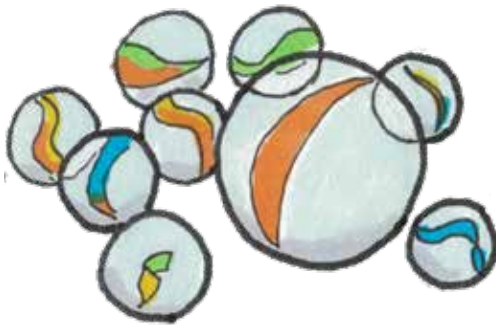
tlaخالchihualoni

Huehcatlahtolli

tlatzopinaloni



tepozmaçtli



ahuiltelolohtli



biyolin