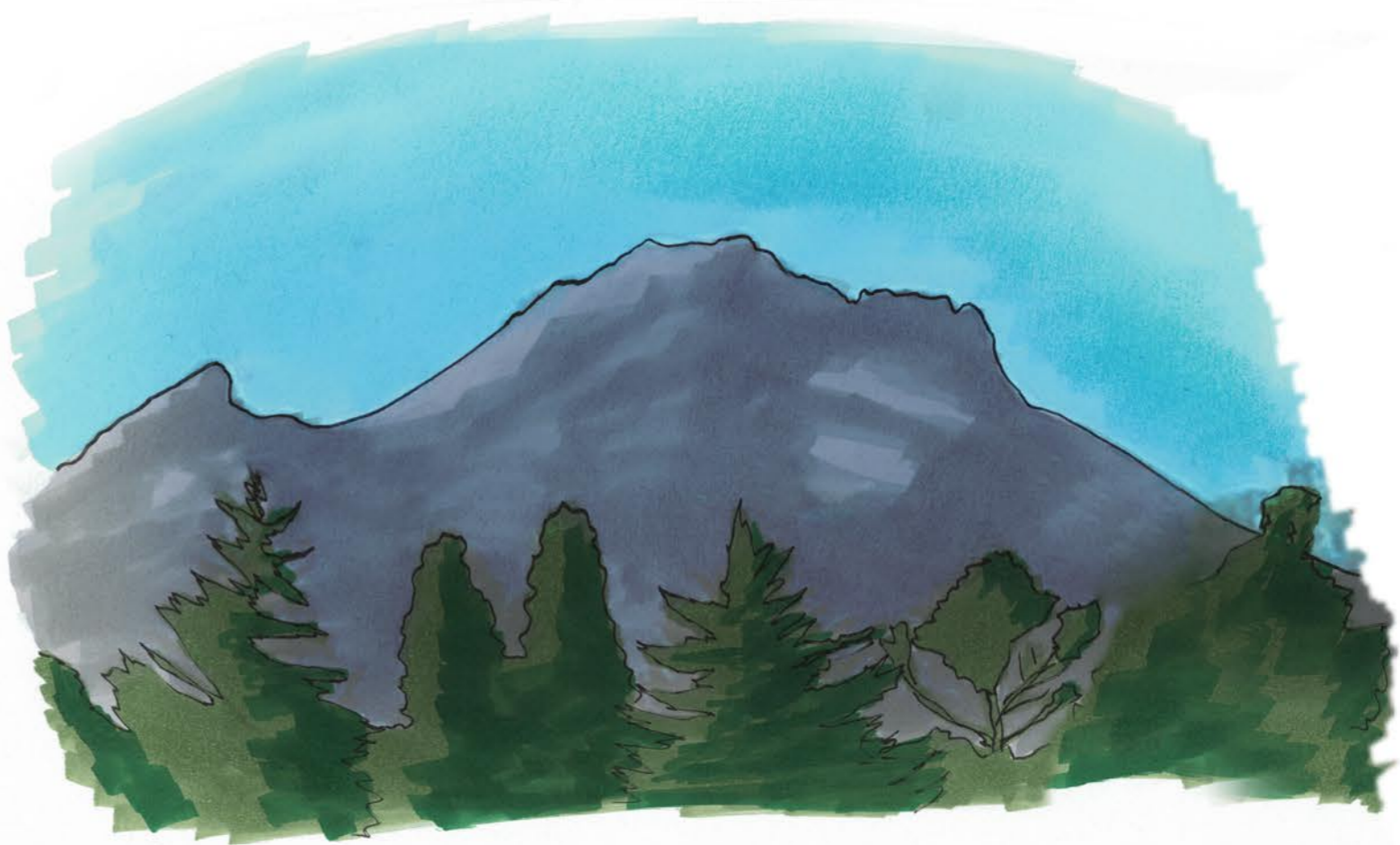




# Tlahtolixcopincayotl San Miguel Xaltipan, Tlaxcala

Joanna Maryniak  
Refugio Nava Nava

Conentzitzin,  
xicmatican totlahtolnemiliz





# Tlahtolixcopincayotl San Miguel Xaltipan, Tlaxcala

Joanna Maryniak  
Refugio Nava Nava







Tlahtolixcopincayotl. San Miguel Xaltipan, Tlaxcala/  
Joanna Maryniak ihuan Refugio Nava Nava

Amoxmecayotl: © Totlahtol

Amoxmecayopil: © Toconejuan

Amoxmecayotl tlayacanqueh:  
Justyna Olko ihuan John Sullivan

© Joanna Maryniak ihuan Refugio Nava Nava

© Huei Temachtical tlen Varsovia,  
Facultad “Artes Liberales”

© Zacatlan Macehualllamiccan

ISBN: 978-83-63636-62-3  
Warszawa 2017

In nin tequitl omochiuh ica in palehuiltomin tlen  
oquitmacac in Consejo Europeo de Investigación  
itechpa in Séptimo Programa Marco de la  
Comunidad Europea (7°PM/2007-2013) ipan Acuerdo  
de Subvención tlen CEI n° 312795.

In aquin amoxihtic otlapahpah, oquitecpan in  
amameh ihuan oquichihchiuh in tlaixpan amatl:  
© Joanna Maryniak

In aquin oquipahpah in tlapaltlamantli ica  
motenquixtia in amoxmecayotl Totlahtol ihuan  
Amoxmecayopil Toconejuan:  
© Martha Elena Ramírez Oropeza

Tlahtolixcopincayotl. San Miguel Xaltipan, Tlaxcala/  
Joanna Maryniak y Refugio Nava Nava

Serie editorial: © Totlahtol

Subserie: © Toconejuan

Editores de la serie:  
Justyna Olko y John Sullivan

© Joanna Maryniak y Refugio Nava Nava

© Universidad de Varsovia,  
Facultad de “Artes Liberales”

© Instituto de docencia e investigación  
etnológica de Zacatecas, A.C.

ISBN: 978-83-63636-62-3  
Varsovia 2017

El trabajo que ha dado lugar a estos resultados  
ha recibido financiación del Consejo Europeo de  
Investigación en virtud del Séptimo Programa Marco  
de la Comunidad Europea (7°PM/2007-2013) en virtud  
del acuerdo de subvención del CEI n° 312795.

Ilustraciones, maquetación y diseño de la portada:  
© Joanna Maryniak

Logos Totlahtol y Toconejuan:  
© Martha Elena Ramírez Oropeza



European  
Research  
Council





Amoxmecayotl Totlahtol



Amoxmecayopil Toconejuan



# Tlahtolixcopincayotl San Miguel Xaltipan, Tlaxcala

Joanna Maryniak  
Refugio Nava Nava

Huei Temachtical tlen Varsovia  
Facultad “Artes Liberales”  
Zacatlan Macehualtlamiccan (IDIEZ)









## Tlaixpantiliztl

---

Nin tlahtolixcopincayotl tlen oquichihqueh Joanna Maryniak ihuan Refugio Nava Nava quiyolitia miec cuacualtzin tlahtol ihuan iixcopinca. Nochi in tlahtol tlen nican moixnextia oquitequihuiayah ihuan oc quitequihuiyah miequeh macehualmeh tlen nemih San Miguel Xaltipan. Tlahuel techyolpaquitia pampa tihuelitih tiquinmactiliah nin amoxtzin in coconeh tlen nemih ihuan momachtiah iminpan miequeh altepetzitzin tlen Tlaxcallan. Miequeh tlahtoah iminhuan imincohcoltzitzinhuan, imintahtzitzinhuan, iminicnihuantzitzin, iminmaicnihuantzitzin ica nahuatl. Noiuhqui cateh occequih coconeh aquihqueh amo quimatih tlahtozqueh nin tlahtol ahnozo quinequih momachtizqueh.

Ticnequih ma yolpaquican coconeh iminhuan imintahhuantzitzin pampa ica nin cuacualtzin tlahtolixcopincayotl huei yaz imintlahtoltlaixmatiliz. Ticnequizquiah nin tlahtolixcopincayotl quinpalehuiz in conentzitzin inic tlapohuazqueh ica nahuatl. Quipiya miec tlahtol tlen ehua ye huehcahua, tlen oquitequitiltiyah tocohcolhuan iminhuan occequih altepetlatlach, tlaxcallantlatlach, tollantlatlach (noiuhqui motocayotiah toltecah).

Noiuhqui tiquihtozqueh ce tlahtol itechpa in tlahcuilohqueh. Refugio Nava Nava omotlcatilih ipan

---





# Tlaixpantiliztl

---

altepetzin itoca San Miguel Xaltipan, ipan municipio Contla de Juan Cuamatzin, Tlaxcala. Omomachtih Universidad Autónoma de Tlaxcala ihuan Centro de Investigaciones y Estudios Superiores en Antropología Social, CIESAS. Yeh motequitiltia ipan Universidad Autónoma de Tlaxcala. Ompa temachtia nahuatl. Joanna Maryniak omotlacatilih ipan Łódź, Polonia, ihuan momachtia doctorado ipan Huei Temachtilcal tlen Varsovia, Facultad “Artes Liberales”. Quinmati miec tlahtolmeh tlen Europa ihuan Asia. Momachtia nahuatlahtol ipan Varsovia ihuan tlahuel quiyolpactia amapohuaz. Noiuhqui tlahuel quiyolpactia quichihuaz maixcopincayotl. In omemeh tlahcuilohqueh tequitih zan ceccan inic amo ixpolihuiz, inic amo moilcahuaz macehualtlahtol ihuan macehualtlailnamiquiliztl ihuehcapanelhuayo.

Justyna Olko ihuan John Sullivan

Varsoviahpan, ipan ompohual ihuan chicuace tonalli metztli tlen holioh macuiltzontl ihuan caxtol ihuan ome xihuitl.

---





# Refugio Nava Nava Justyna Olko

## Chicahuac tonelhuayo

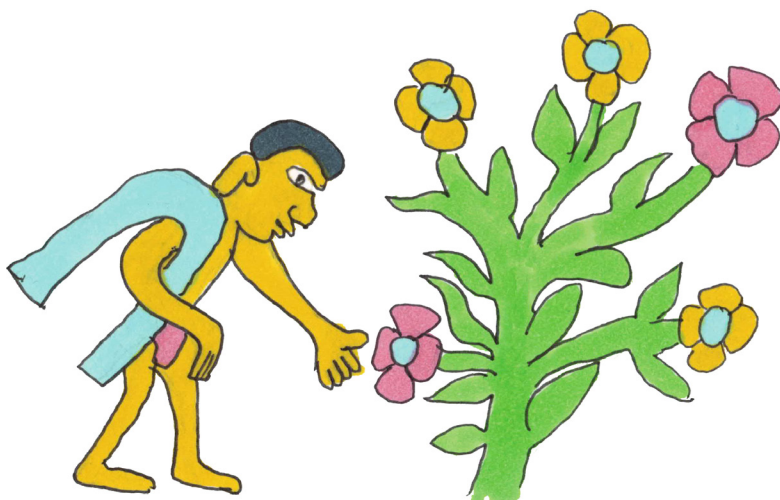






## Chichahuac tonelhuayo Teotihuacan

Nahuatlatacah iminnemiliz tlen opanoc ipan Mezoamericah tlahuel huehcapatl. Ye quipiya tlatlahcopan 2000 ihuan 1500 xihuitl macehualmeh tlen huei altepetl Teotihuacan tlahtoayah nahuatlahtol. In aquihqueh ompa onemiyah oquipanohuiayah 120,000 macehualmeh tlen ohuallayah mieccan. Oquichihchihqueh ce huei altepetl. Oquitequitiltia-yah imintlal ihuan noiuhqui otlanemacayah ihuan omotlacoahuiliayah iminnahuac occequih altepemeh tlen Mezoamericah. Tocayotl tlen Teotihuacan otechpanoltilihqueh mexihcotlatlatacah. Yehhuan oquilnamiquiyah in huei ohtli itoca **miccaohtli**, ohtli tlen mictoqueh, ihuan imintoca in ome tlatzacualmeh: ce itoca **itzacual in tonaltzin** ihuan in occe itoca **itzacual in metztli**.



miccaohtli

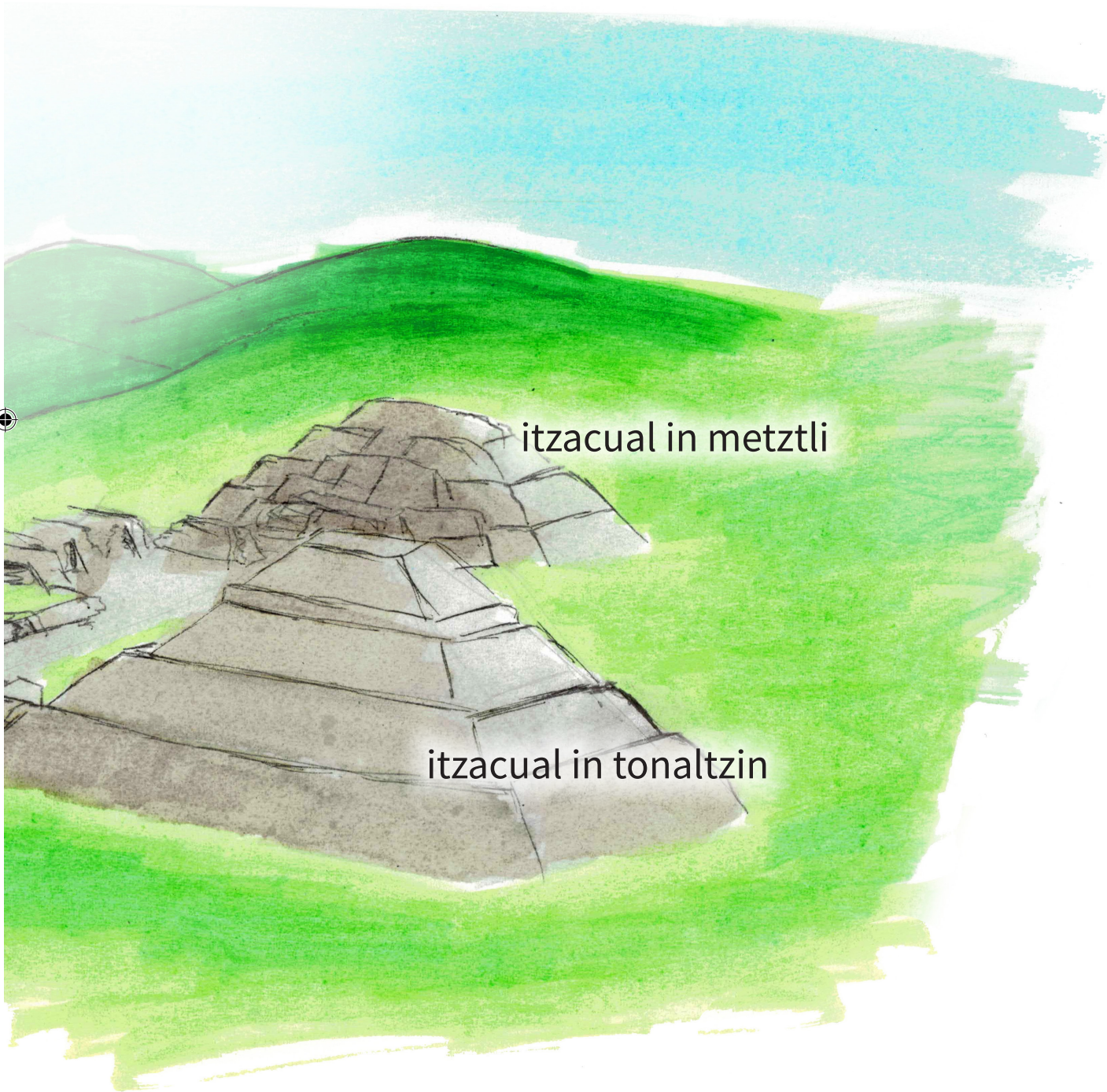






# Chicahuac tonelhuayo Teotihuacan

---



---

ome

2





## Chichahuac tonelhuayo Tollantlatlach

---

Tollantlatlach oquichihchihqueh ce altepetl itoca **Tollan** ihcuac omotlamitih Teotihuacan ipan huei xihcahuitl VIII ihuan IX. Axxan hueliti moittah calmeh tlen oquichihqueh, motocaixmatih Tollan ipan Estado tlen Hidalgo. In tollantlatlach cualli omohuicayah iminnahuac in macehualmeh tlen itzonco ihuan itzintlan Mezoamericah. Tollan oyec ce huei altepetl ihuan itlanahuatil oquipanohuaya Mexihcotlalli. Nin altepetl oquixinihqueh ihuan oquitlatihqueh ipan XI huei xihcahuitl. Ipan nonqueh tonal opeuhqueh ahcicoh tlatlach imintoca chichimecah tlen itzonco Mexihco.

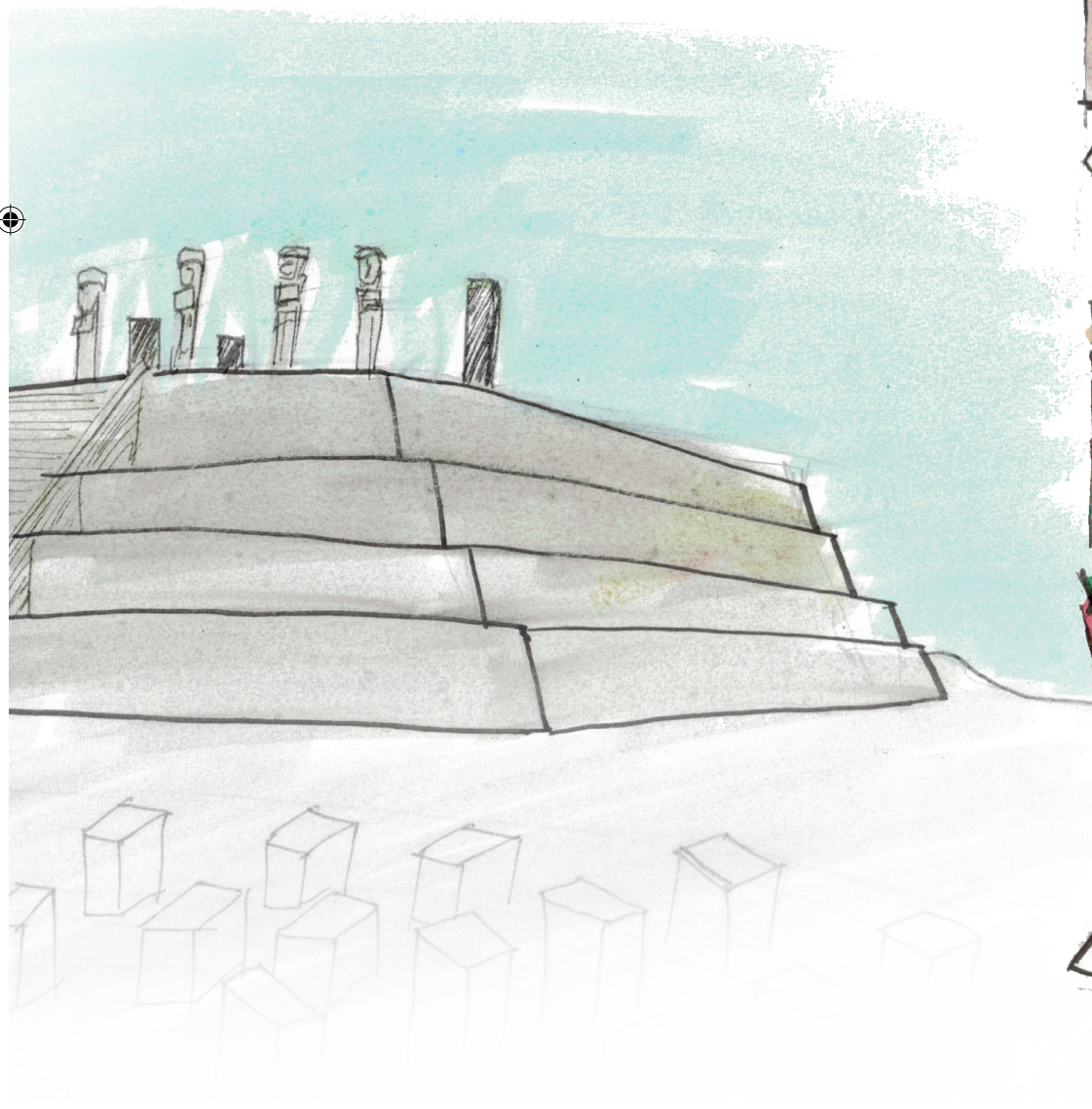






# Chichahuac tonelhuayo Tollantlatlachah

Tollan

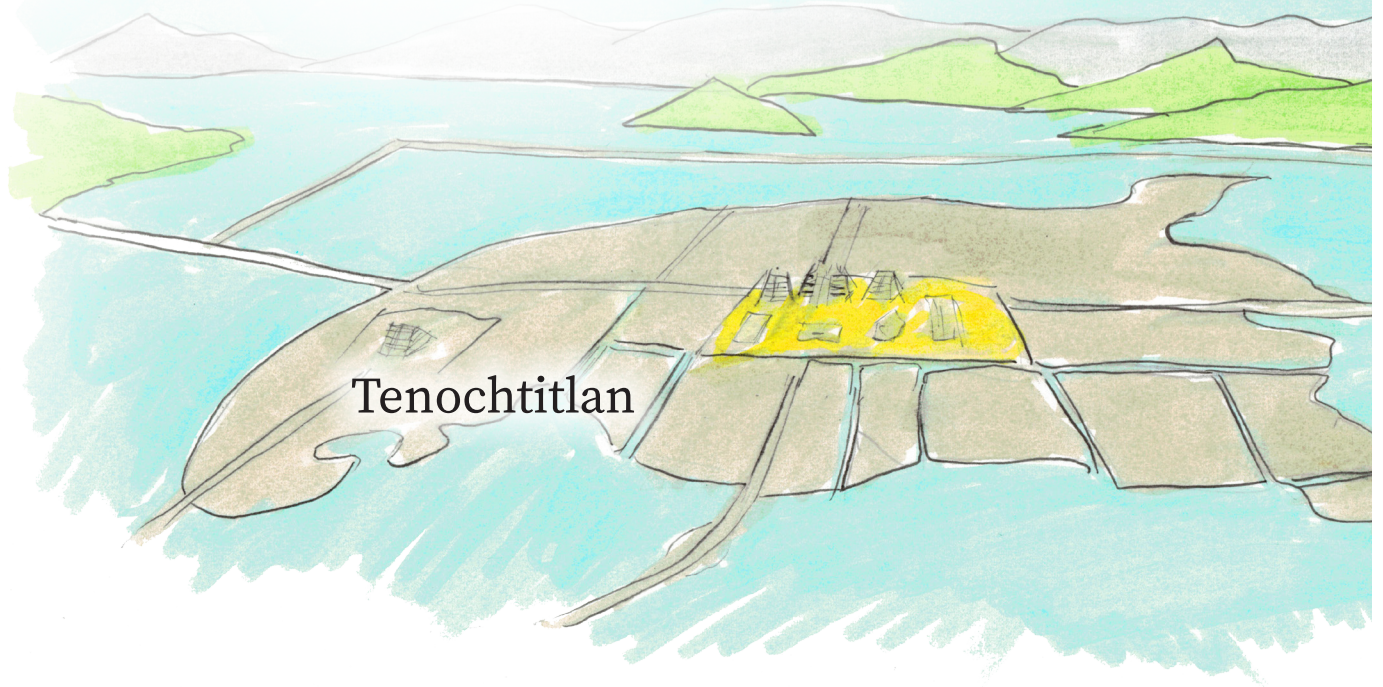






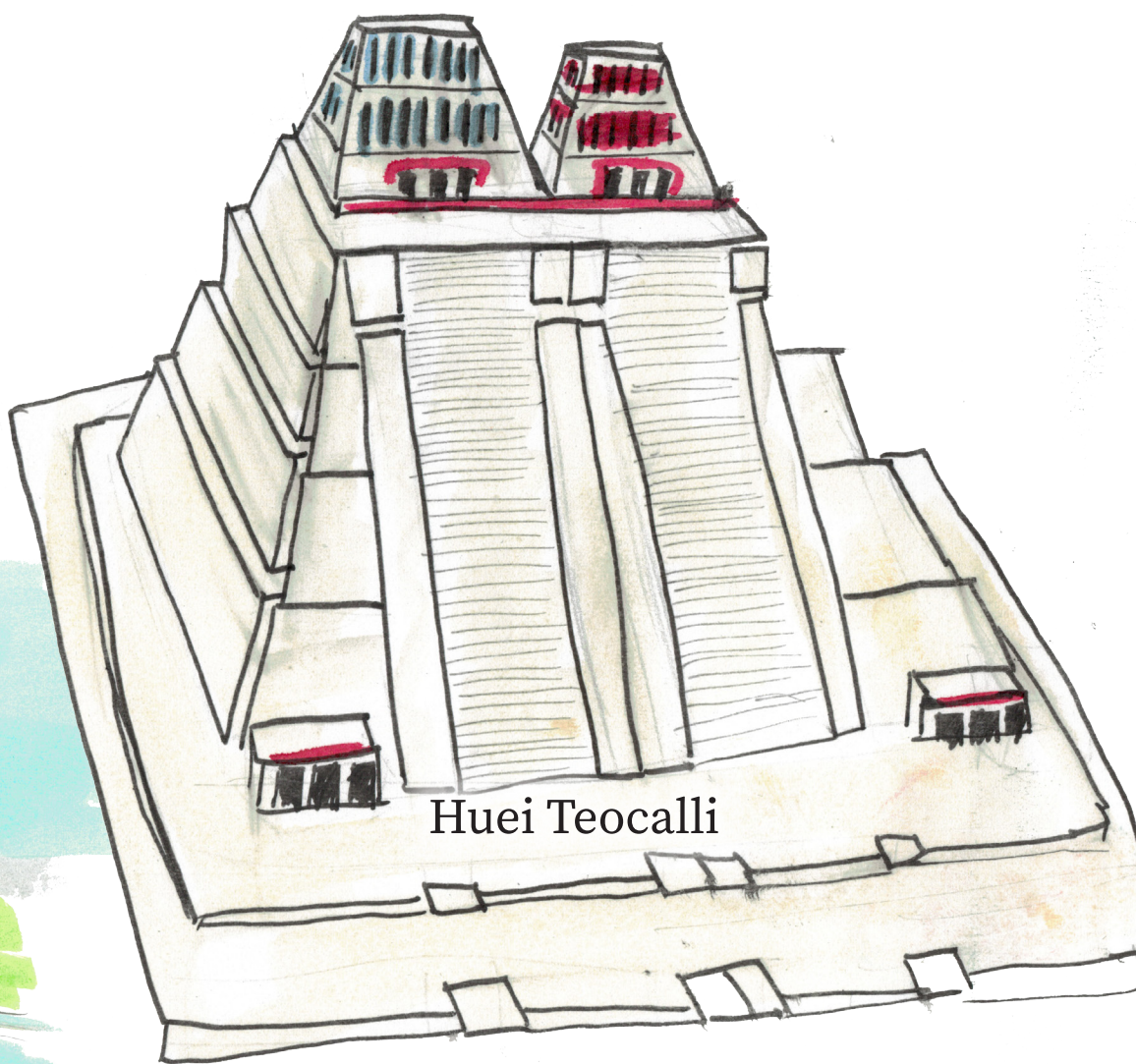
## Chichahuac tonelhuayo Mexihcotlatlach

Mexihcotlatlach noihqui motocaixmatiyah aztecah ihuan otlahtoayah nahuatl. Itlatlahco 1430 ihuan 1519 xihuitl, otlanahuatiyah miecpan Mezoamericah. Motocaixmatiyah Excan Tlahtolloyan ihuan huei oyiya imintlal: oahciya Xoconochco, Mexihco itzintlan. Mexihcotlatlach oquipiyayah iminnelhuayo huehca. Opehuaya iminhuan in tollantlatlach iminhuan chichimantlatlach (noihqui motocayotiah chichimecah) aquihqueh ohuallayah itzonco Mexihco. Iminaltepehuan oyequeh **Tenochtitlan**, Texcoco ihuan Tlahcopan. In altepetl ocachi oixquizaya ye in Tenochtitlan tlen omocahuaya ipan ce acomolli ipan Texcoco. Ompa noihqui omocahuaya **Huei Teocalli** tlen axxan tiqittah ipan Mexihco.





# Chichahuac tonelhuayo Mexihcotlatlachah







## Chichahuac tonelhuayo Mexihcotlatlach

In mexihcotlatlach aquihqueh otlayecanayah omoixmatiyah queme “**ocelotl ihuan cuauhtli**”. Nonqueh tlanemacaqueh, pochtecatlatlach, oyayah nochcan ipan Mezoamericah ihuan oquihuallicayah huehca miec tlamantli tlen oquinemacayah ipan tianquiz tlen **Tlatelolco**. In tlahcuilohqueh oquicauhteuhqueh miec amoxtli campa otlahcuilohqueh ica imintlahcuilol ihuan noiuhqui miec tetl ica imincopinca totiotzitzin queme **Quetzalcoatl**, **Tlaloc**, Huitzilopochtli, Xiuhteuctli ihuan Xipeh Totec.



ocelotl ihuan cuauhtli



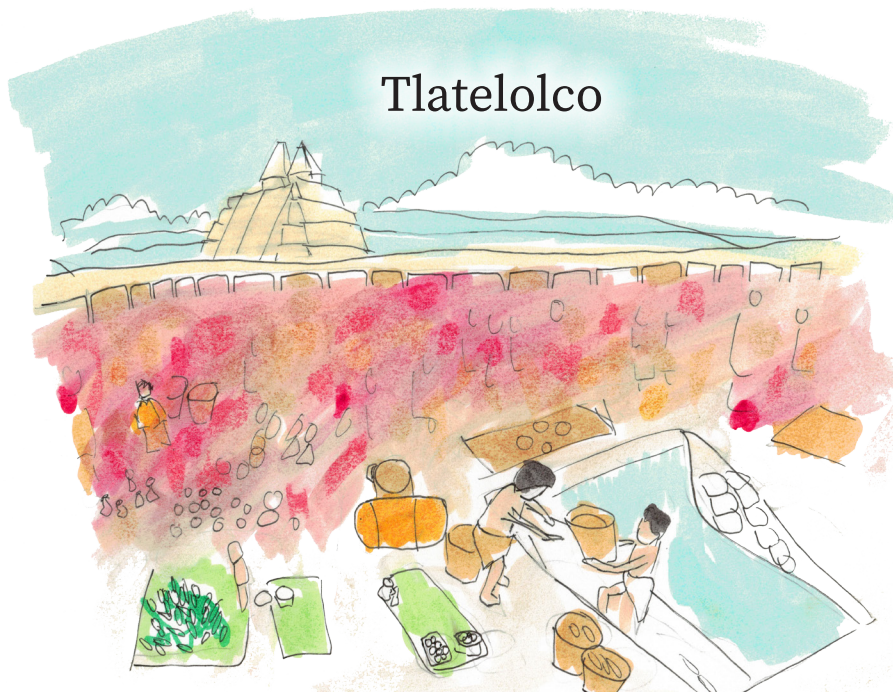
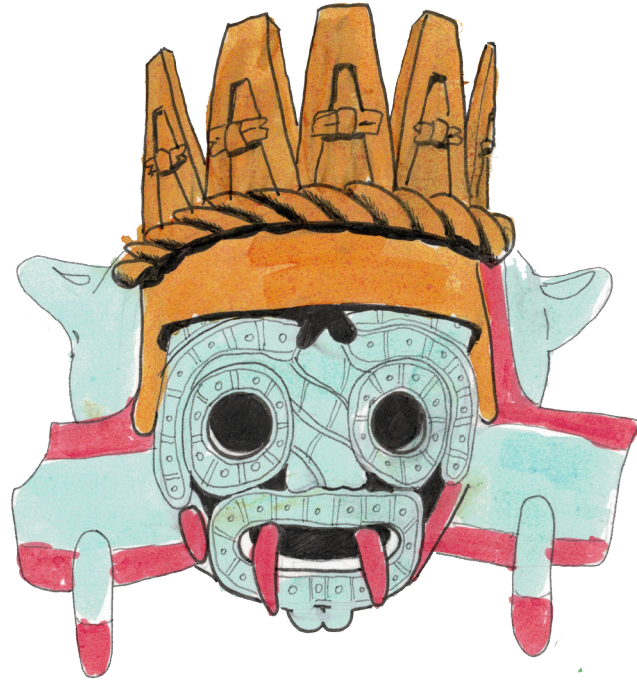


# Chichahuac tonelhuayo Mexihcotlatlachah



Quetzalcoatl

Tlaloc



Tlatelolco





## Chichahuac tonelhuayo Tlaxcallan

---

Ipan non tonal, ye oyeya ce huei tlanechicol nican Tlaxcallan, in nin huei altepetl omochiuh itlatlahco in xiuhcahuitl XIII ihuan XIV. Oquipehualtiqqueh in chichimantlatlach, aquihqueh ohuallahqueh zacatlanhuic iminhuan occequih tlatlach tlen oquinhualnamicqueh. In ninqueh tlatlach omotlalihqueh iminpan nahui altepemeh: Tizatlan, Ocotelolco, Tepeticpac ihuan Quiyahuiztlan. Cehcen altepetl oquipiyaya ce tlahtoani iminhuan cequih teuctin aquihqueh otlapalehuiayah. In nahuimeh tlahtoanih omonechicoayah ihuan otlanahuatiayah ipan huei altepetl. Tlaxcallan oyiya chichahuac ihuan omotehuiaya iminnahuac in mexihcotlatlach tlen onemiyah ompa Tenochtitlan, Tlatelolco ihuan Tlacopan. In michhuahqueh (ahzo purepechah) noiuhqui omotehuiayah iminnahuac in mexihcotlatlach.

In tlaxcallantlatlach amo omotecahuilihqueh ihuan oquinenemilihqueh quenin quiicahuizquiah iminnemiliz. Achto oahcizquiah in caxtillantlatlach omotehuihqueh iminnahuac in mexihcotlatlach ipan xihuitl 1515. Otlatlanqueh in tlaxcallantlatlach ihuan imintlanahuatil oahcic Huexotzinco.







## Chichahuac tonelhuayo Tlaxcallan

In tlaxcallantlatlach oquitlazohtlayah iminteouh  
Camaxtli iminhuan occequih teteoh queme Tlaloc  
ihuan Matlalcueyeh. Nochtin oquipiyayah canin  
oquinilhuiquixtiayah. Oiyah cequih tlatlach  
aquihqueh oquichihuayah in tequitl. Yehhuan  
oquintlamaniliayah inic cualli oyezquia in talticpac.





## Chichahuac tonelhuayo Tlaxcallan

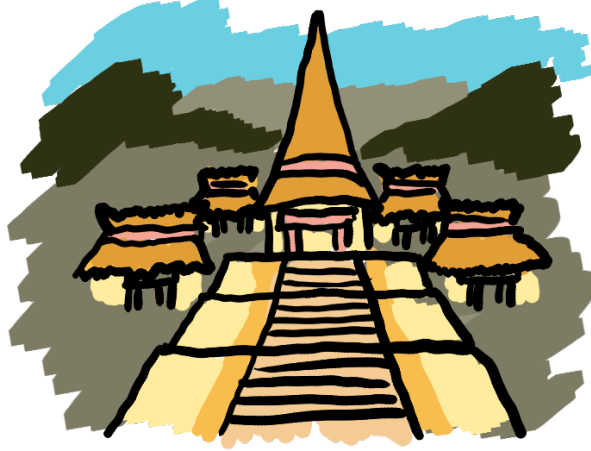
---

Zan niman ihcuac yoyiyah in caxtillantlatlach nican Tlaxcallan, in tlaxcallantlatlach oquitlah-tlanqueh in tlen iminpan opohuiya ihuan oquinecqueh quinenemilizqueh iminemiliz. In tlahtoanih tlen otlanahuatiayah iminpan nahui huei altepemeh oquichiuhqueh ce huei altepetl ihuan itoca oyec Tlaxcallan. Nican Tlaxcallan zan ochanchihuayah macehualmeh, ihuan in caxtillantlatlach amo ocualtiyayah quimocoheizqueh tlalli. Nochtin in tequihuahqueh oyequeh tlaxcallantlatlach ihuan ihcuac oquichiuhqueh in nechicoliztlahtoacalli itoca cabildo, teipan 1530 nochi in cualantli ihuan tlanahuatilli tlen oquipiyayah in macehualmeh ihuan ompa omoyectlaliaya oquintlahtoltiayah ica nahuatl. Nican Tlaxcallan oahcicoh in teopixqueh franciscanos iminhuan dominicos ihuan omochihchihqueh miequeh teopancalmeh. In macehualmeh oquixqueh iminixtlamachiliz ihuan oquizalohqueh quenin tlahcuilozqueh ica caxtillantlahcuilol. In amoxtlahcuilol oquinpalehuih moxixicozqueh ihcuac acah oquinequiya quinquixtiliz in tlen iminpan opohuiya. In macehualmeh tlen Tlaxcallan oquixqueh ihuan oquicahuihqueh iminixtlamachiliz ihcuac nican oyequeh in caxtillantlatlach ihuan axxan oc nemih ica iminnahuaixtlamachiliz.





# Chichahuac tonelhuayo Tlaxcallan



*Ninnemiliz yn sancto Amalo xi emo ca quitiã yni  
nemiliz yn sancto amalo. ychual ymnã hincãta moõri  
pan Quimmo tlacolia ya ymmotõhija cãchue hnetim yn  
tãlla oõlilizthi yn can pexãtilo yn qualhi nemiliz yõh yn õni pan  
vẽmãcã nemiliz yõh Augimãtes salticpãe yno quicãc que  
ymithẽ tlãtõh yncãcã*





## Chicahuac tonelhuayo Aquihqueh chantih Xaltipan

---

Nican, San Miguel Xaltipan ipan municipio Contla de Juan Cuamatzi, Tlaxcala, titlahtoah ome tlahtol: nahuatl ihuan caxtillantlahtol. In tetahtzitzin ocachi quimatih nahuatl. Yehhuan amo quilcahuah in nin tlahtol ihuan quitequitiltiah nochi in tonal. Cequih tequitih millah, occequih tlanemacah, noiuhqui cateh aquihqueh tlahquitih. Quinchihchihuah ayameh.

In zohuatzitzin quimatih noiuhqui nin tlahtol. Yehhuan quimatih tepahtizqueh, quimatih quenin quinmocuitlahuizqueh in conentzitzin ihuan noiuhqui quimatih tlacualchihuazqueh ihcon queme oquichihuayah ye huehcahua, amo quicahcahuah iminixtlamachiliz. Nochi in imintequiuh quichihuah ica nin tlahtol.

In conentzitzin tlahtoah ocachi caxtillantlahtol. Cequih quinequih momachtizqueh in macehualtlahtol, ye non ic oticchiuhqueh nin amoxtl pampa quin-palehuiz tlazalozqueh.

Cequih conentzitzin chantih iminnahuac imincohcolhuan, yehhuan cemihcac quicaquih nin tlahtol ihuan quinequih monohnotzazqueh queme quichihuah imintahhuan.

Axxan in totlahtol ye pohpoliuhtih. Ye non monequi titequitizqueh tinochtin inic amo tlamiz toixtlamachiliz. Monequi tiquinmachtizqueh in





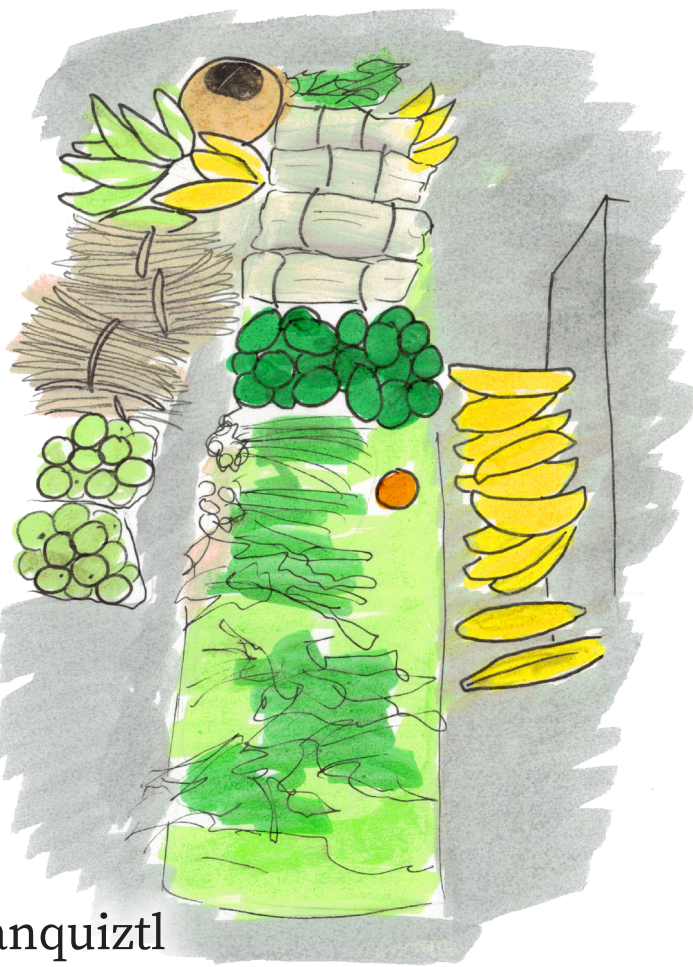


# Chichahuac tonelhuayo Aquihqueh chantih Xaltipan

conentzitzin nochi in tlen  
tehhuan ticmatih itechpa  
in ilhuicac, in toquiztl, in  
cocoliztl, in tlacualtzintli,  
in tlatzotzonal. Monequi  
occepa cueponiz in  
totlahtol.



totiotzitzin



tianquiztl







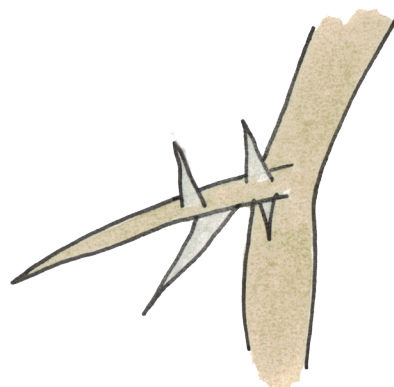
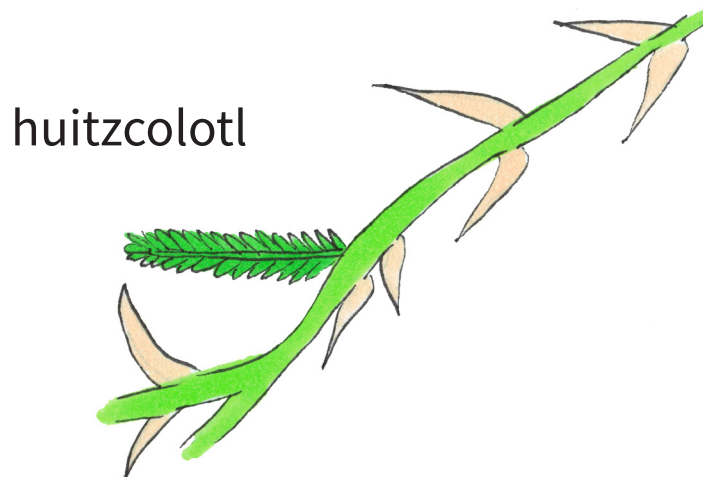
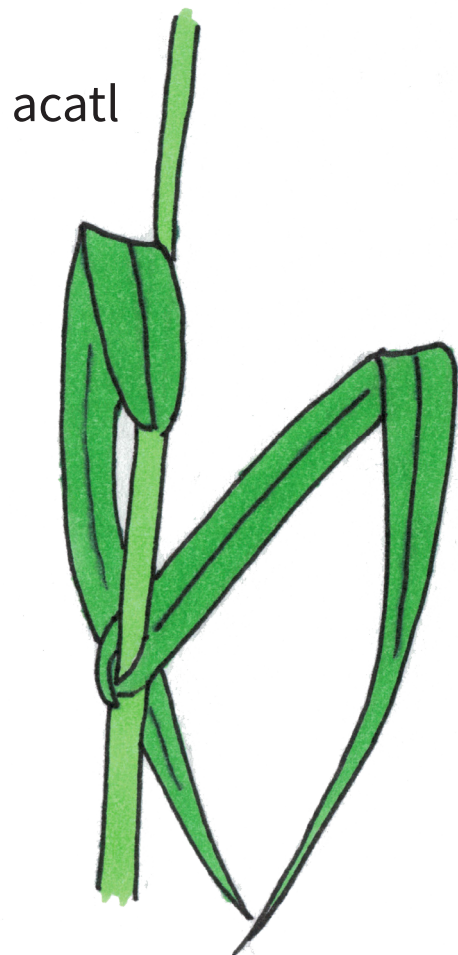
# Tlahtolixcopincayotl







# Cuauhtlan





# Cuauhtlan

cuauhmeatl



cuauhtlan

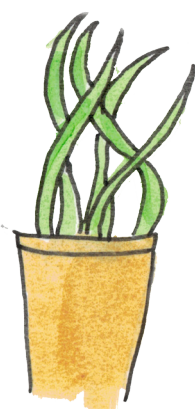


ehecatzin

tetl



tepetl



xihuitl

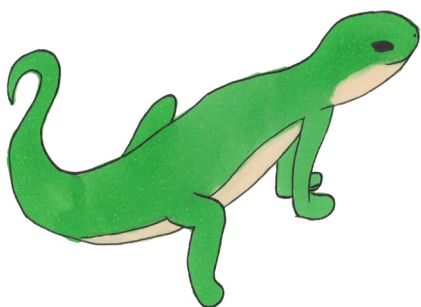
tzitzicaztl





# Tecuanimeh

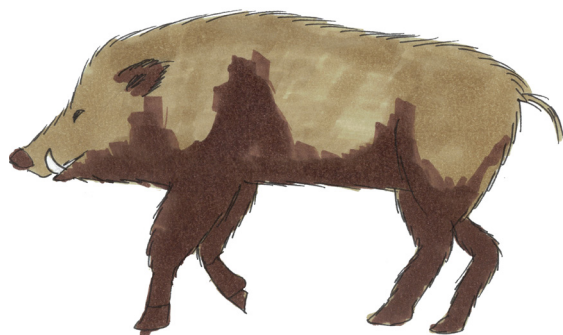
topitzin



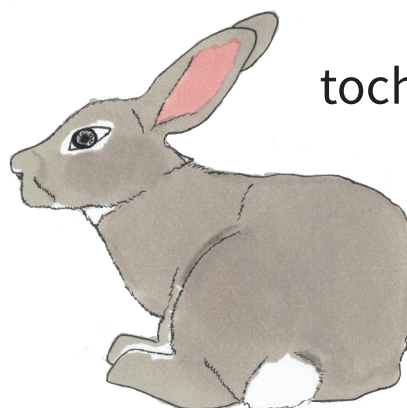
cozahtl



cuapitzotl



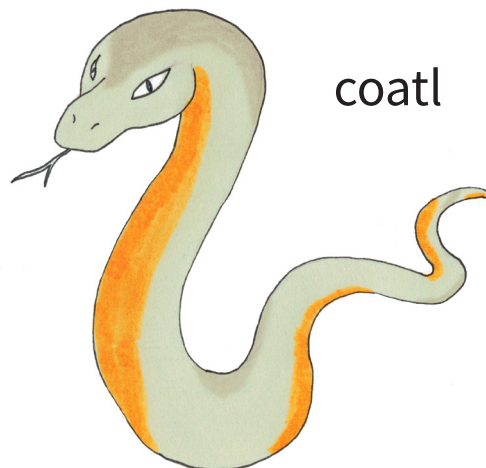
tochtli



tlalitzal



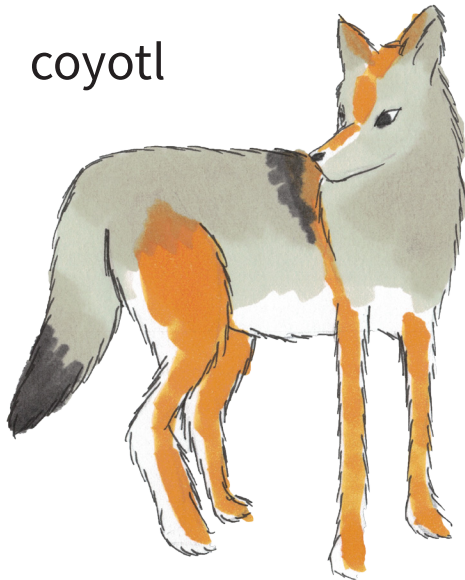
coatl





# Tecuanimeh

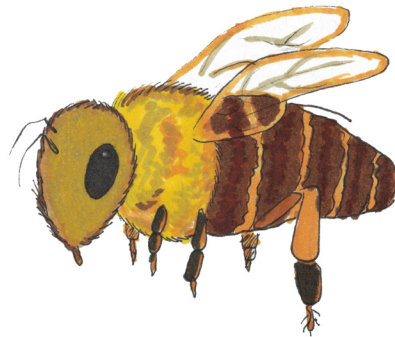
coyotl



tlacuatzin



xicohtl



tecpin



techalotl



chiquina

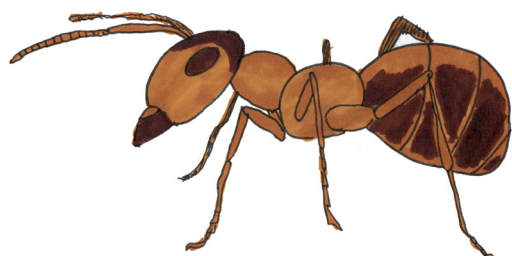




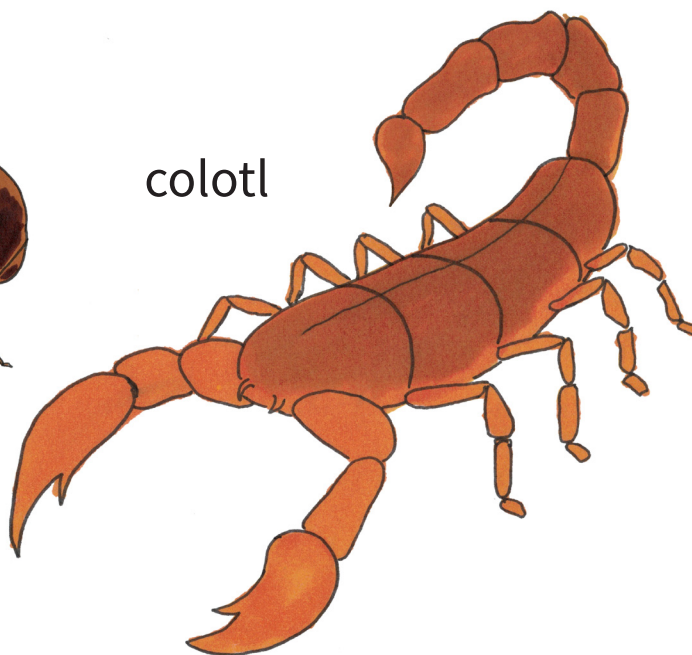


# Tecuanitzitzin

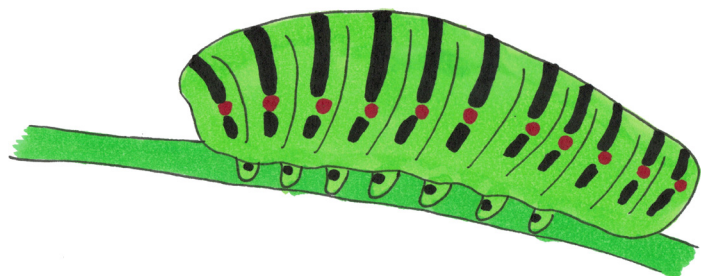
azcatl



colotl



ocuilin



papalotl

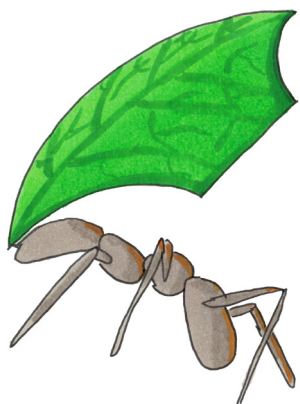




# Tecuanitzitzin

---

azcatl



tocatl

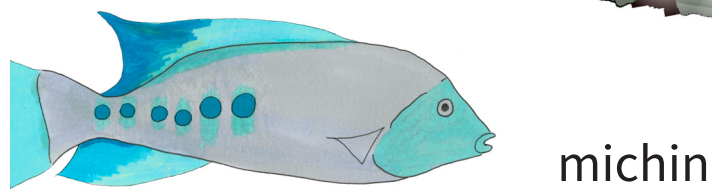
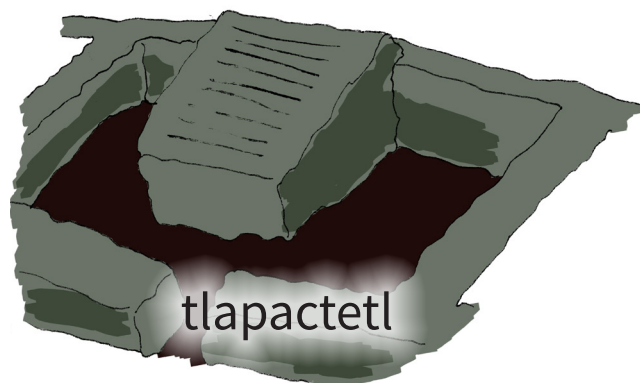
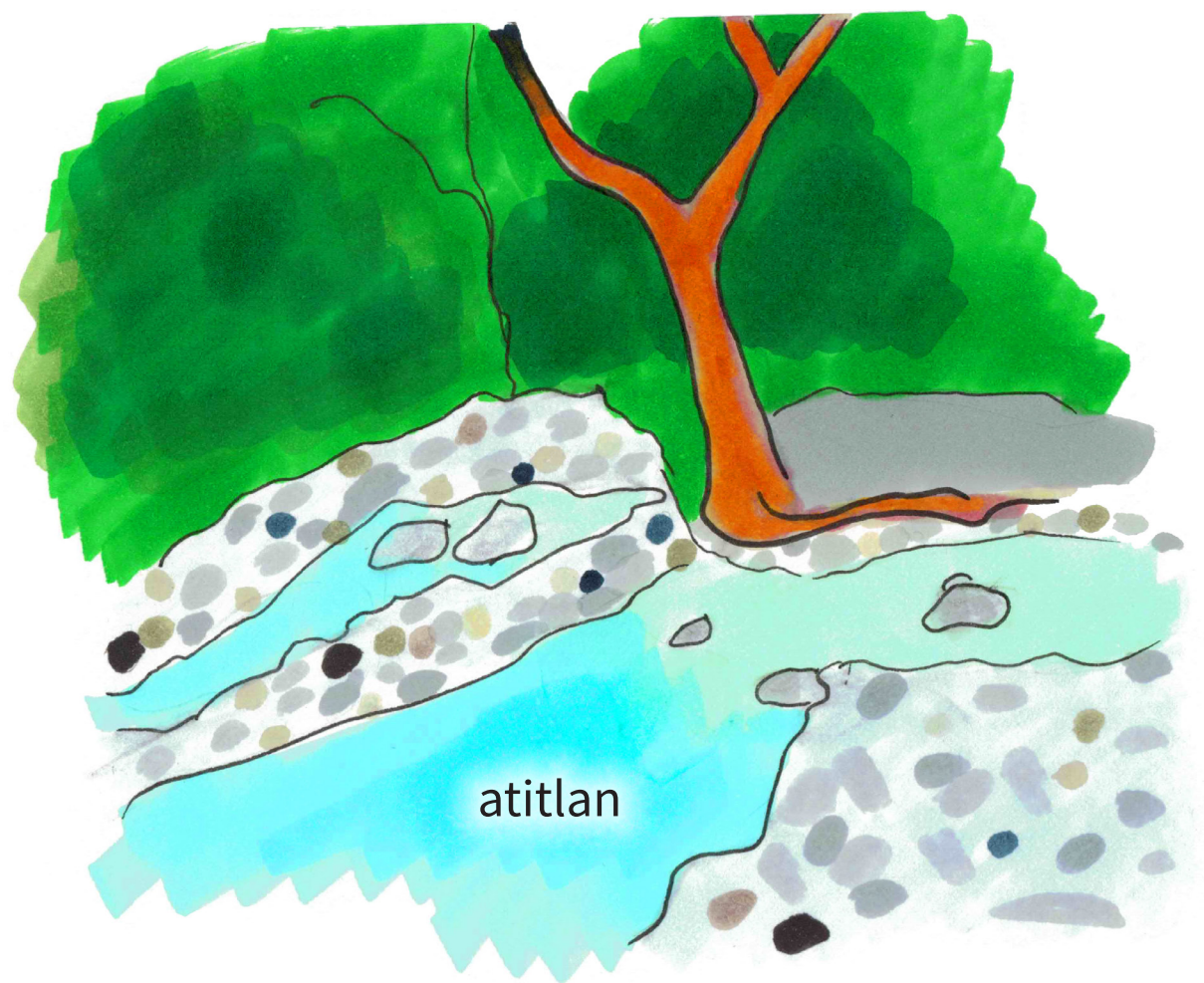


tentzopin





# Atitlan

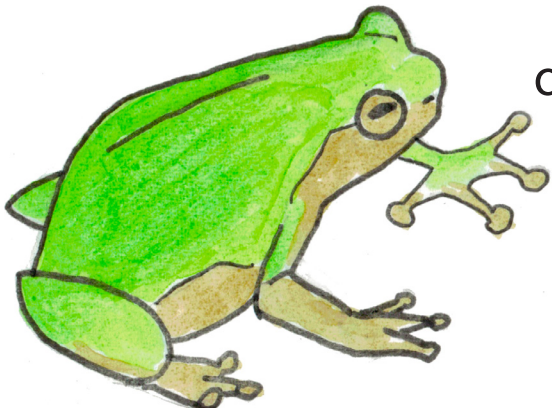






# Atitlan

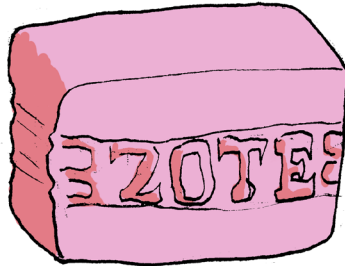
---



calatl



nitlazohua



xapoh



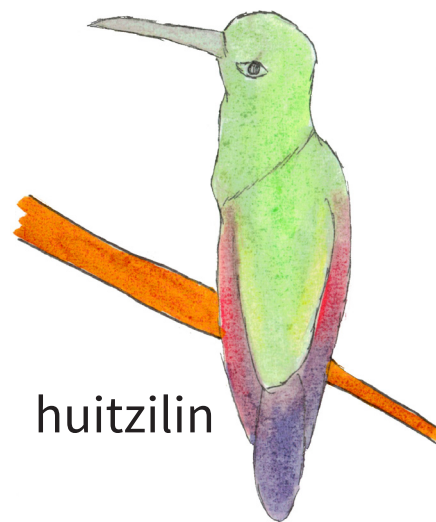
nimaltia



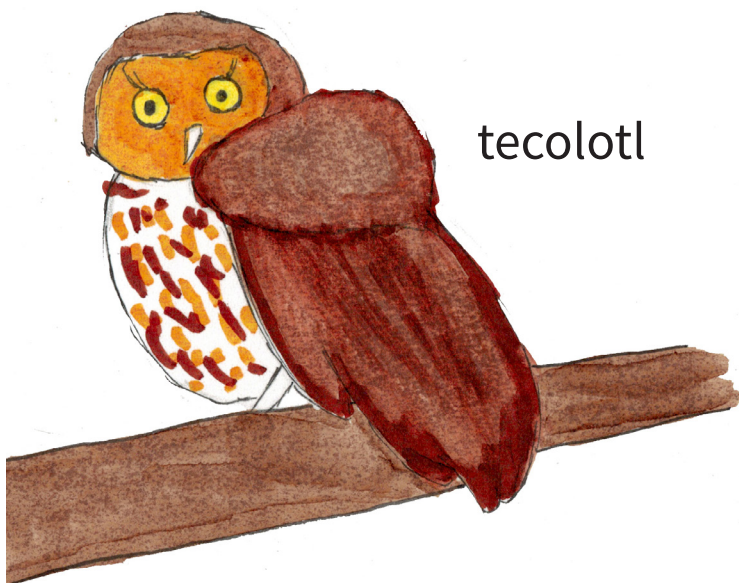


# Totomeh

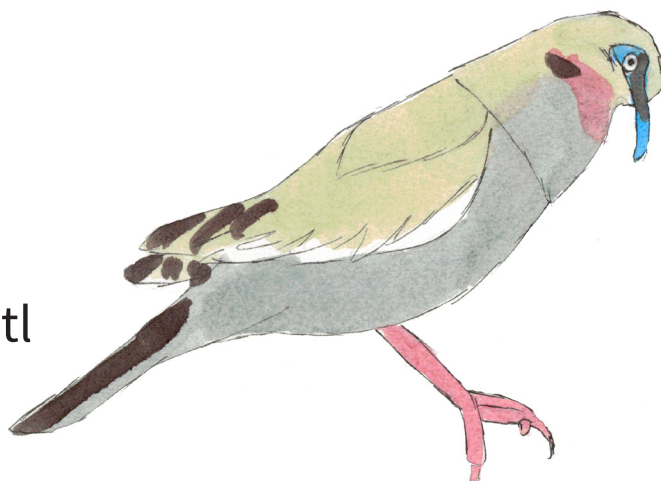
---



huitzilin



tecolotl



huilotl





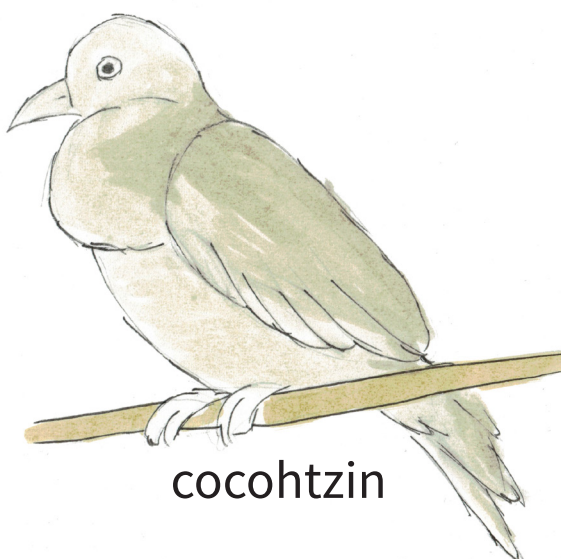
# Totomeh

---

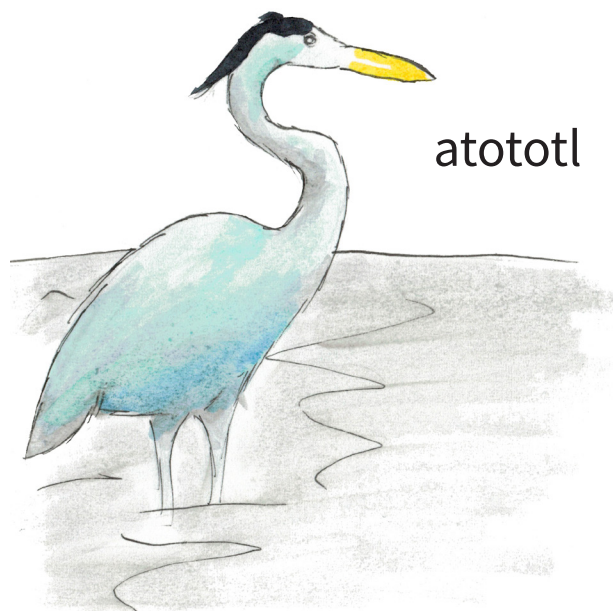
cacalotl



cocohtzin



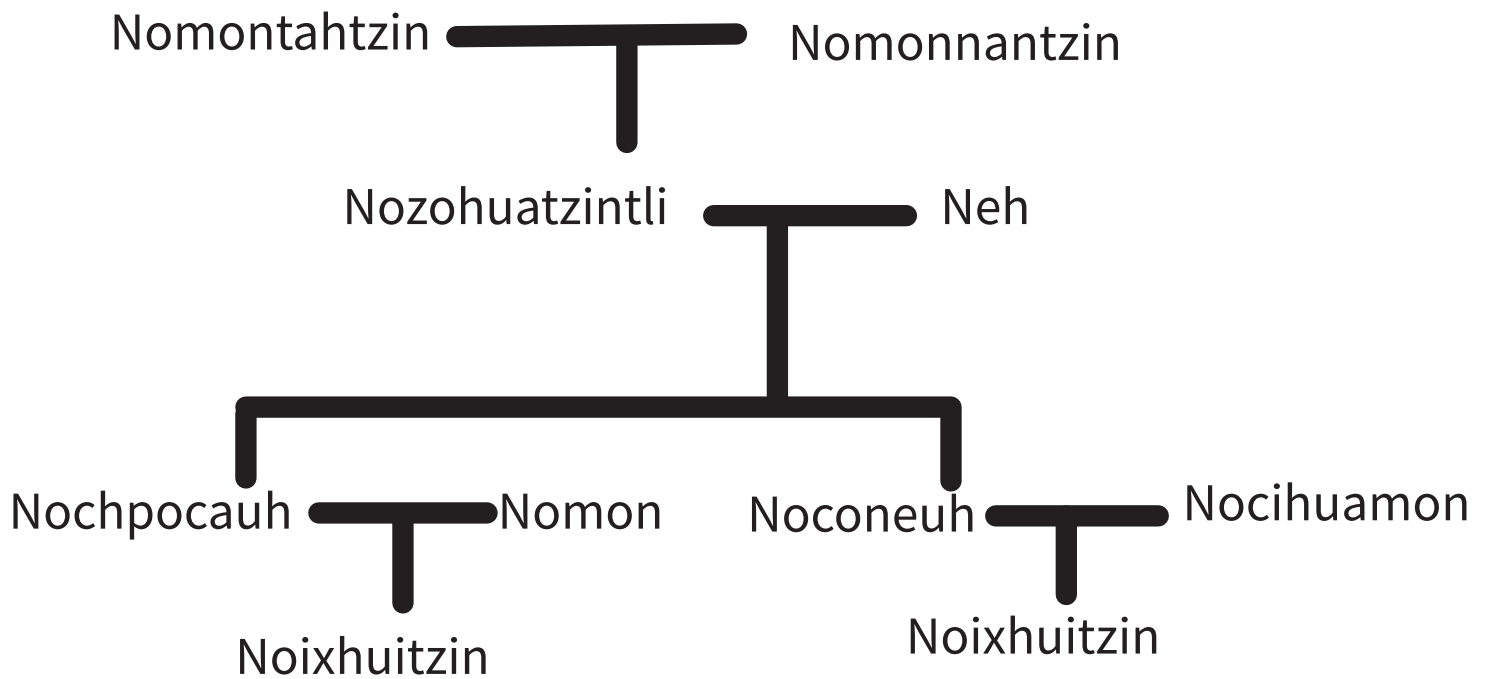
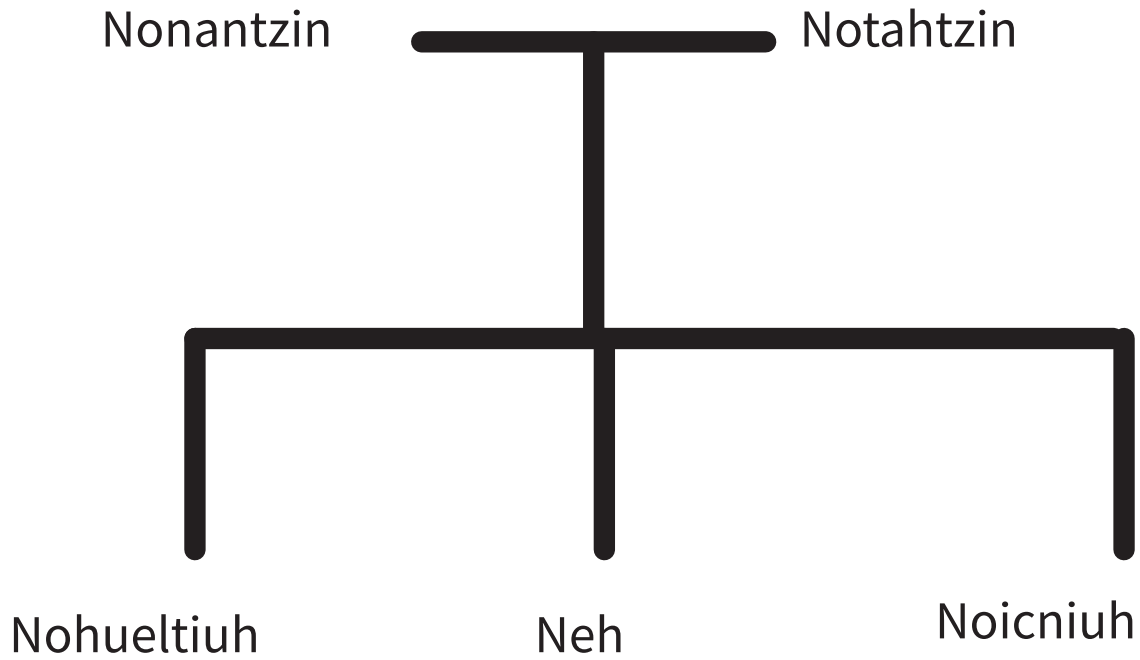
atototl





# Noteixmatcahuan

---

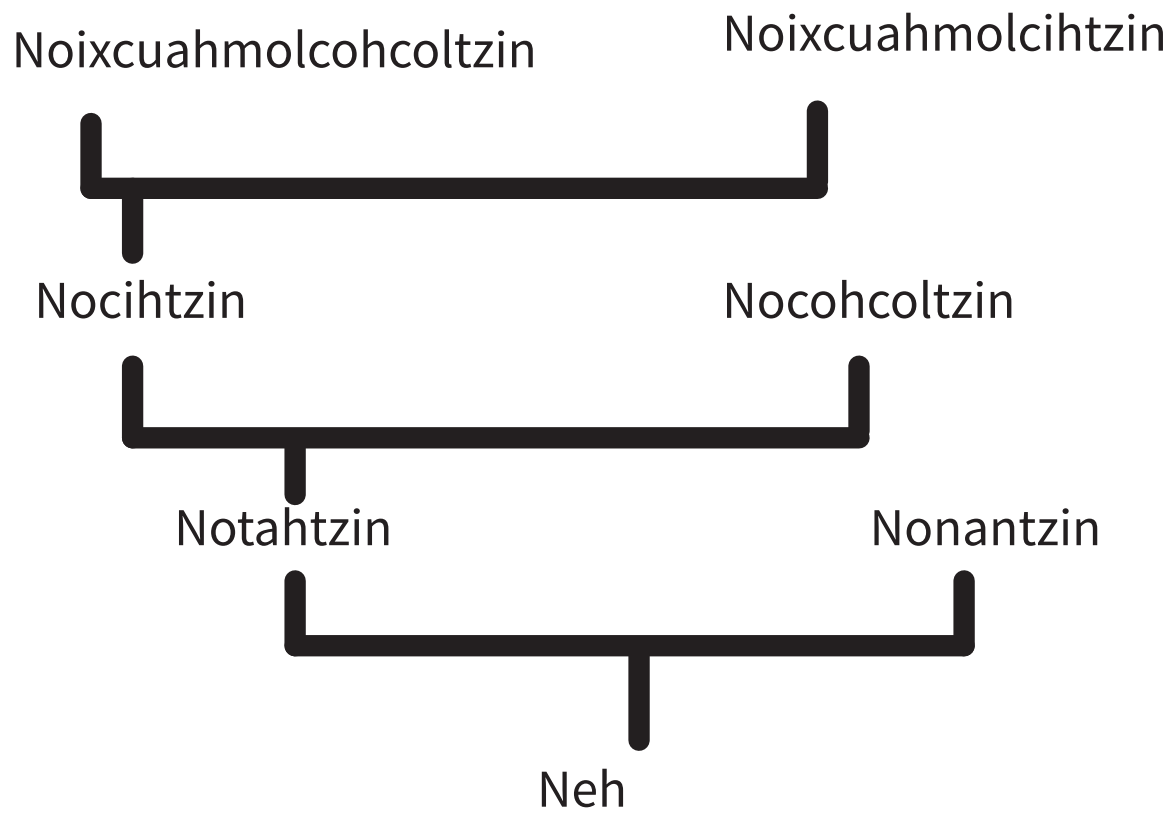






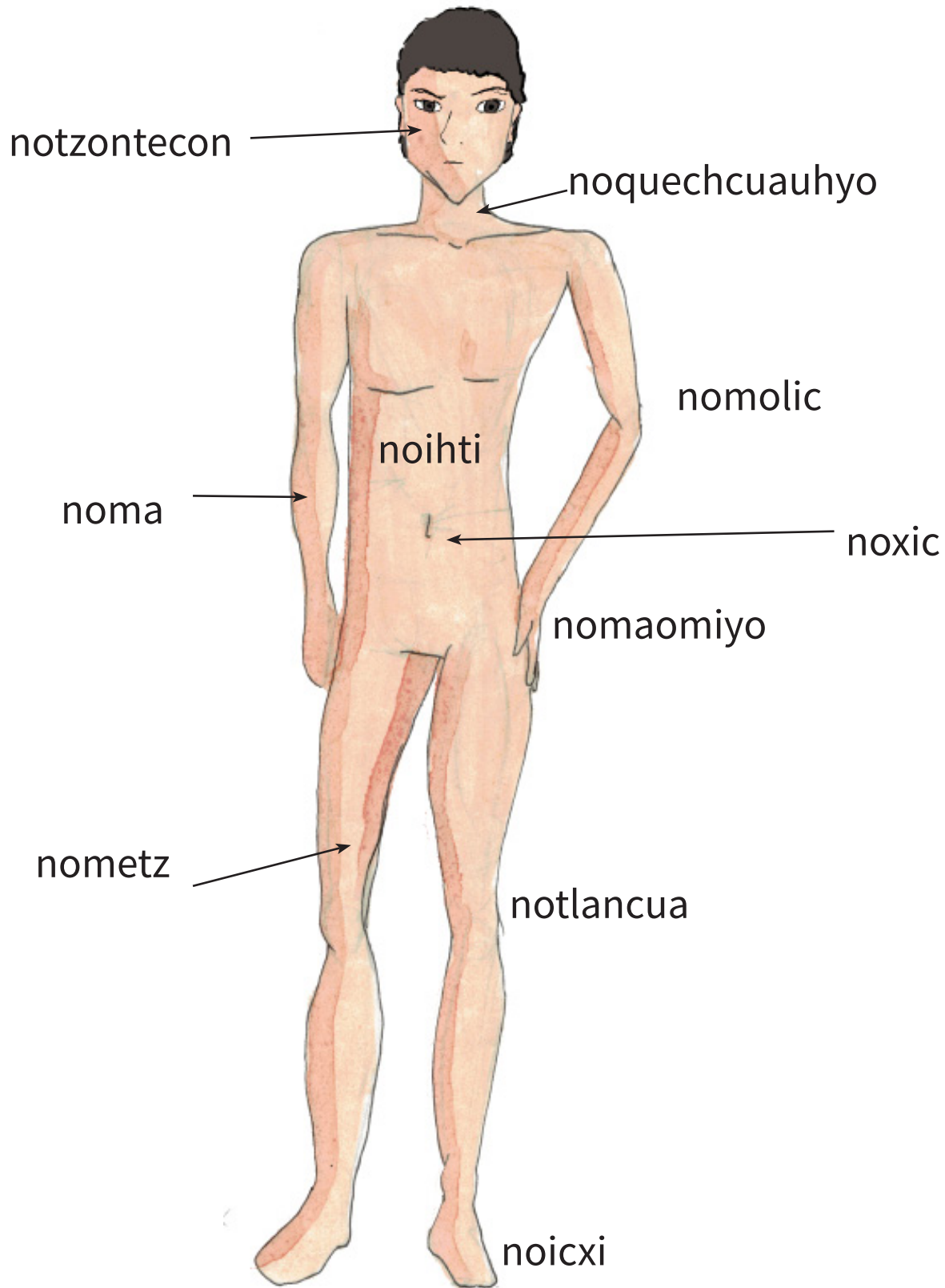
# Noteixmatcahuan

---



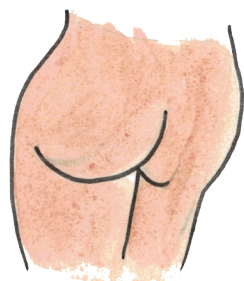
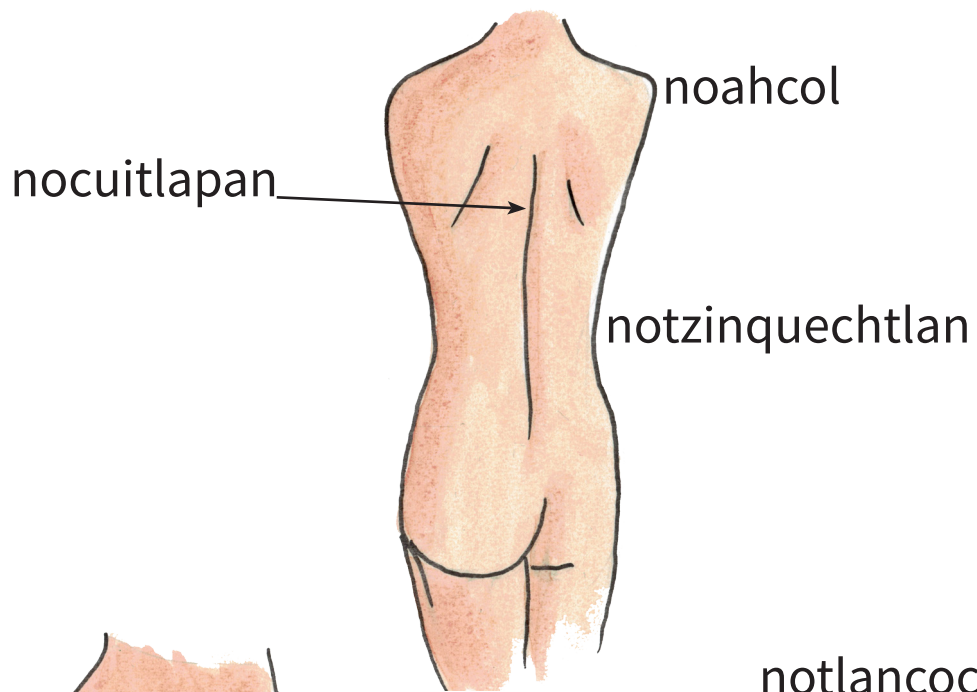
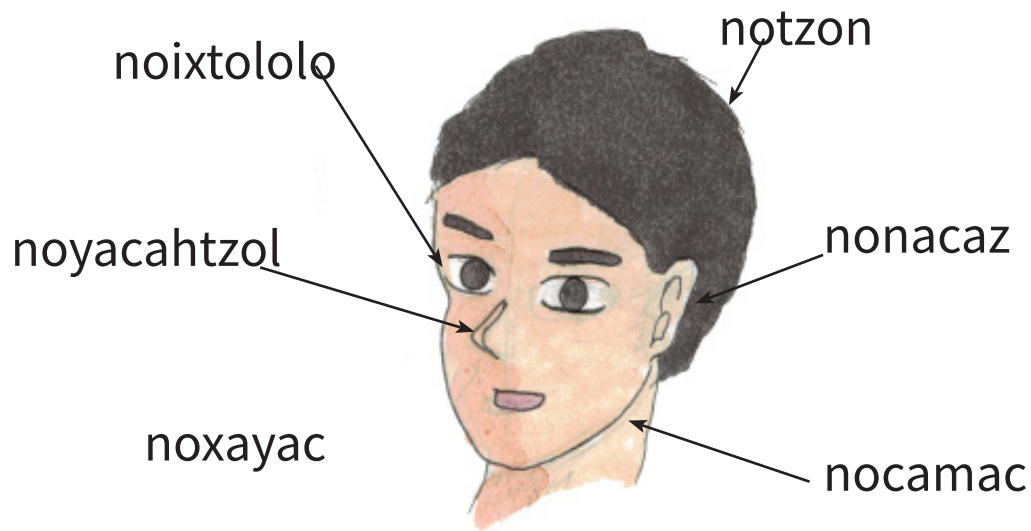


# Nonacayo





# Nonacayo



notzintamal





# Tilmahtl

noquechtlan



nocueh

cueitl

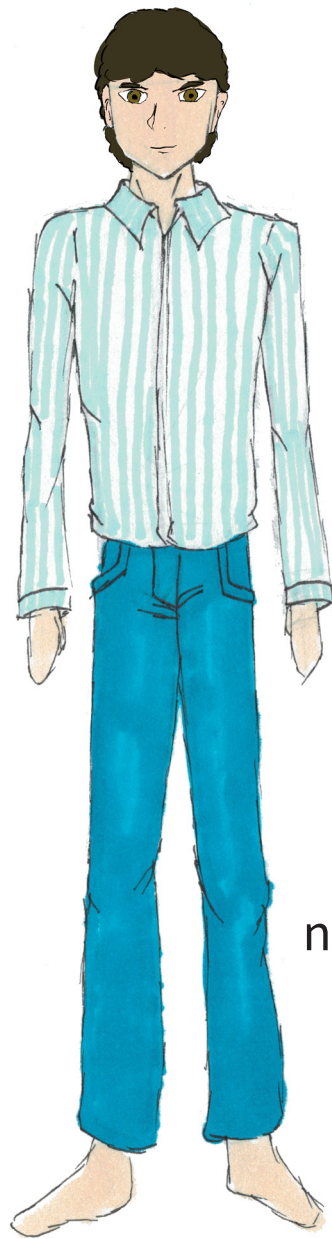






# Tilmahtl

---



nocoton

notlaquen

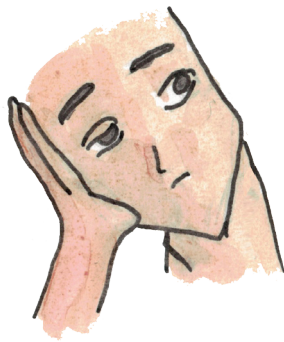




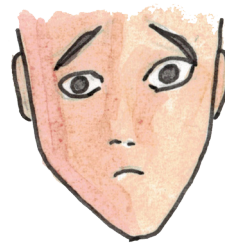
# Quenin timomachiliah

---

nitlaocoya



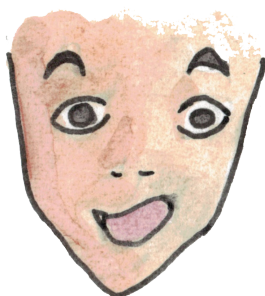
nimocuezoa



nicualantoc



niyolpactoc

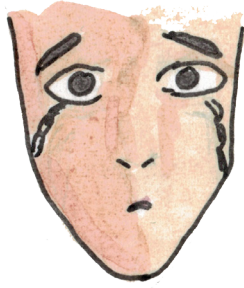




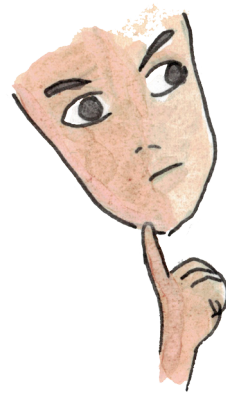
# Quenin timomachiliah

---

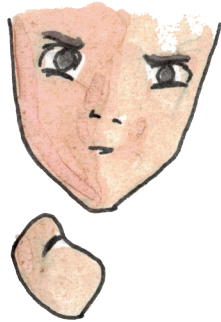
nimochoquilia



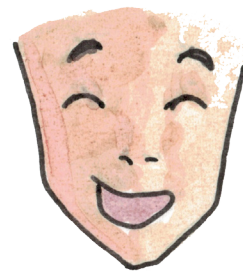
nitlailnamiqui



nitopontoc



nihuetzca



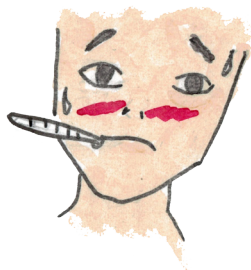


# Cocoliztl

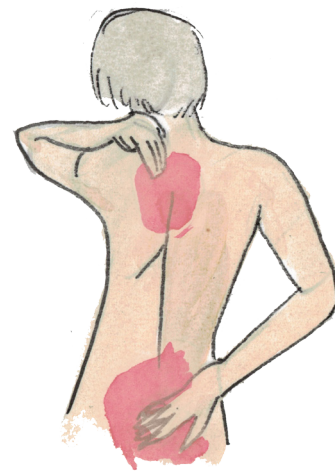
nimococoa



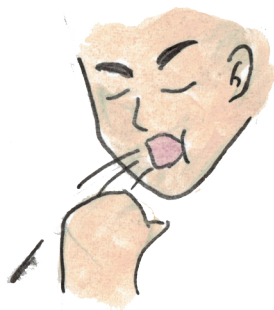
nicpiya totonqui



nicuahcuauhti



nitlatlaci



nimihzotla







# Cocoliztl

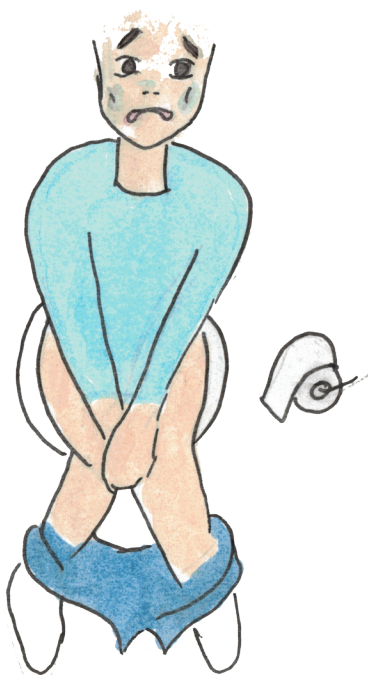
niixpoyahui



atotomontzin



tlanquilli



nielmoyahui



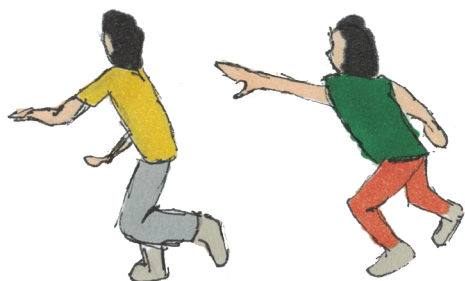


# Mahuiltliztl

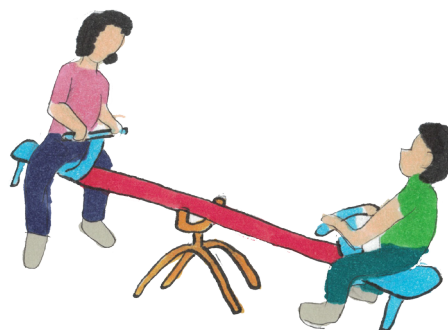
timotemoah



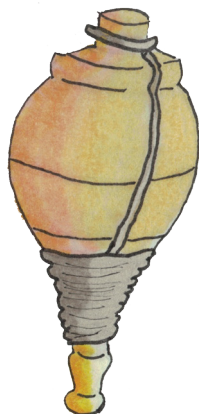
timotocatinemih



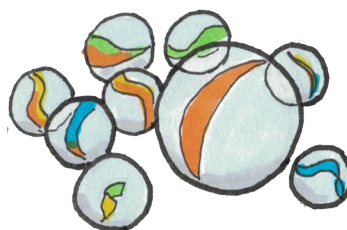
titlelehcoh



tiquihtotiah



tiquintlaloah



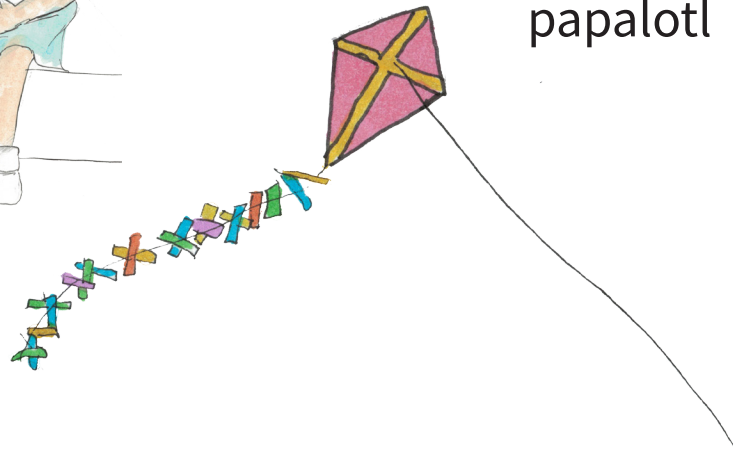


# Mahuiltiztl

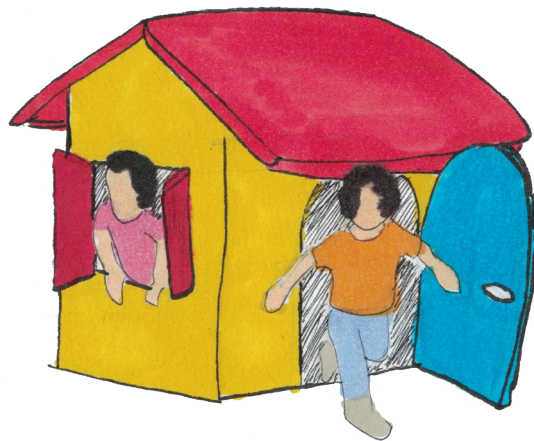
timahuiltiah



papalotl



cacaltzin



coconetl



ompohual

40





# Nochantzin

---



nochantzin

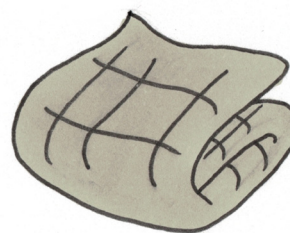
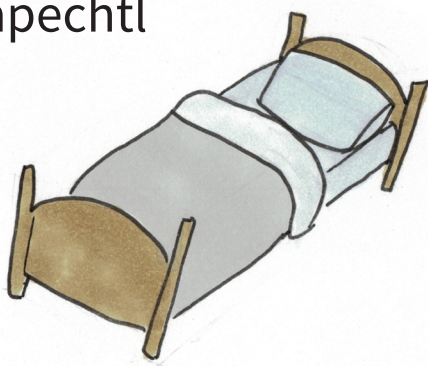
cuauhcahon



tilmahtl



tlapechtl



ayatl



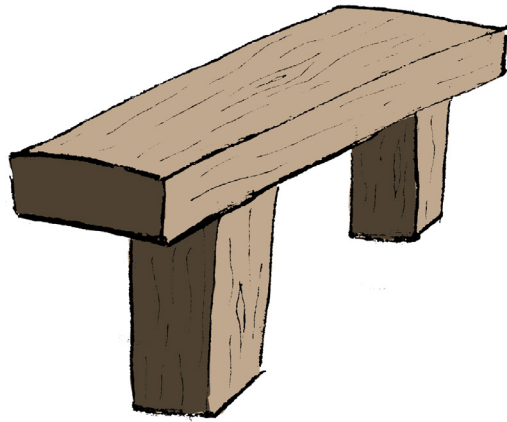




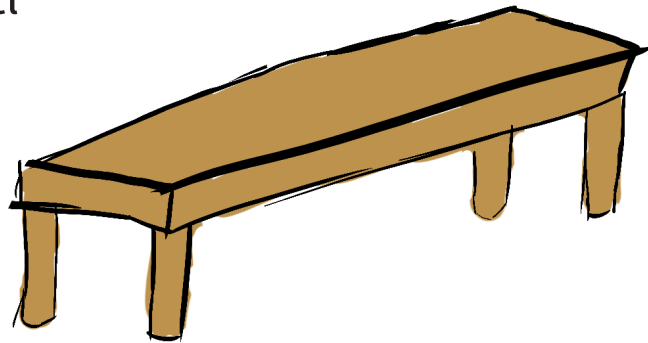
# Callal

---

icpal



ahcopechtl



---

omphual ihuan ome

42

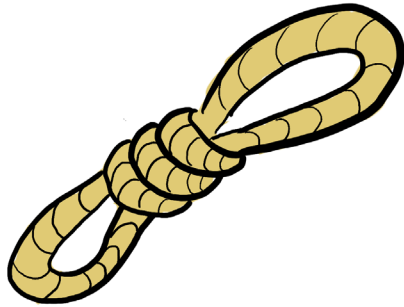




# Callal

---

mecatl



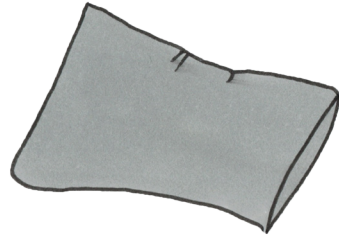
popotl



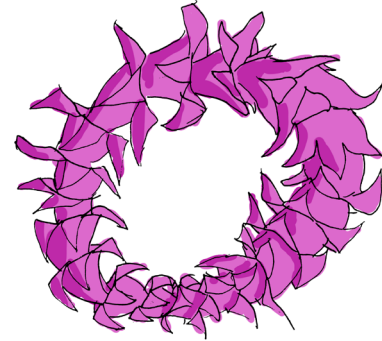


# Caltzin

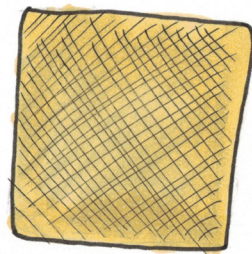
cochpal



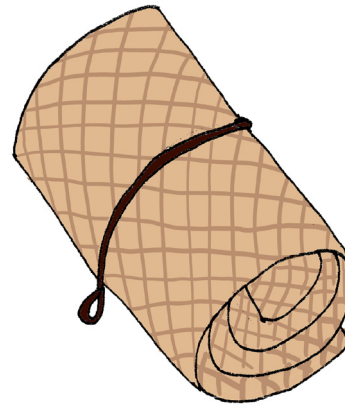
xochicozcatl



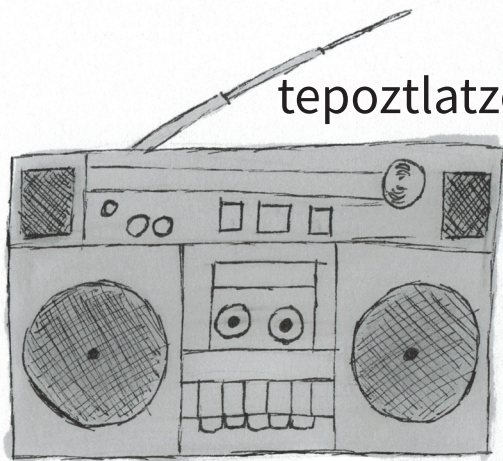
chilpetlatl



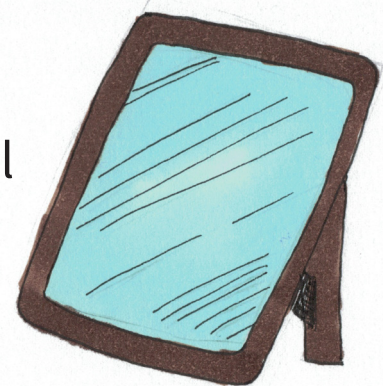
petlatl



tepoztlatzotzonal



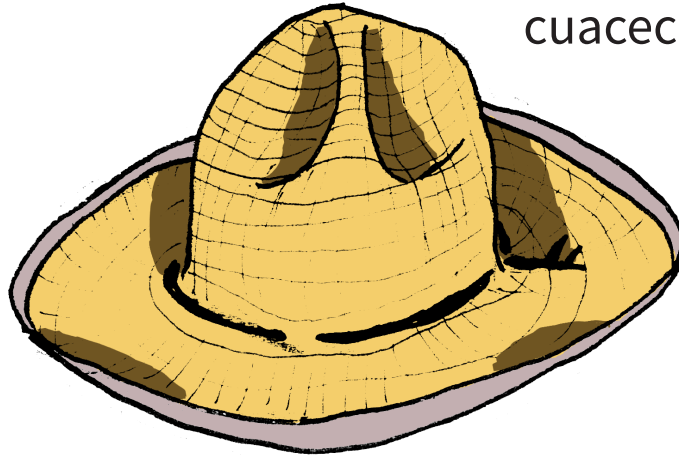
tezcatl





# Calihitic

cuacecahuil

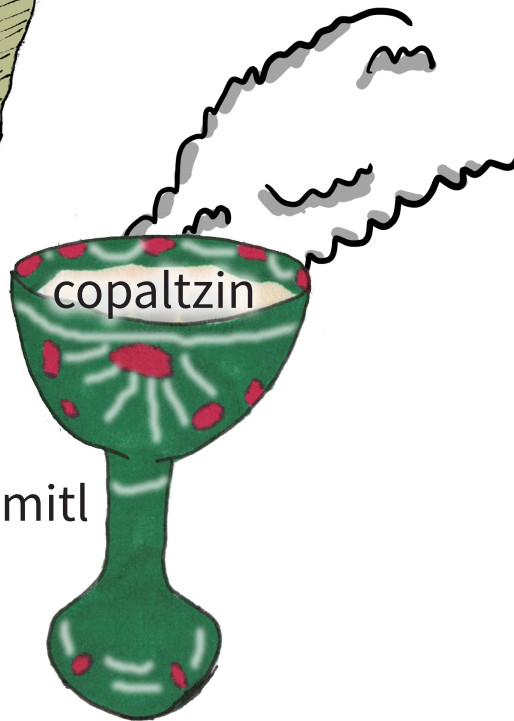


chiquihuitl



copaltzin

popochcomitl



xochimantli

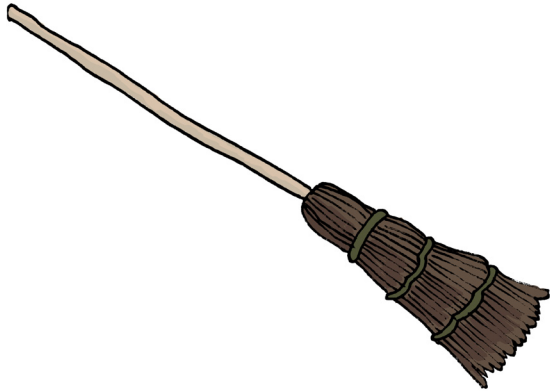




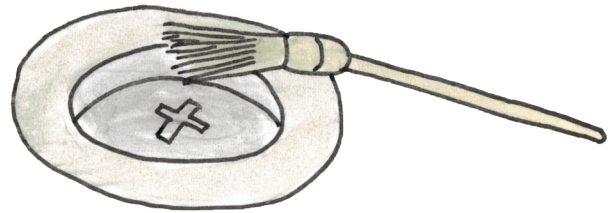


# Calihcic

popotl



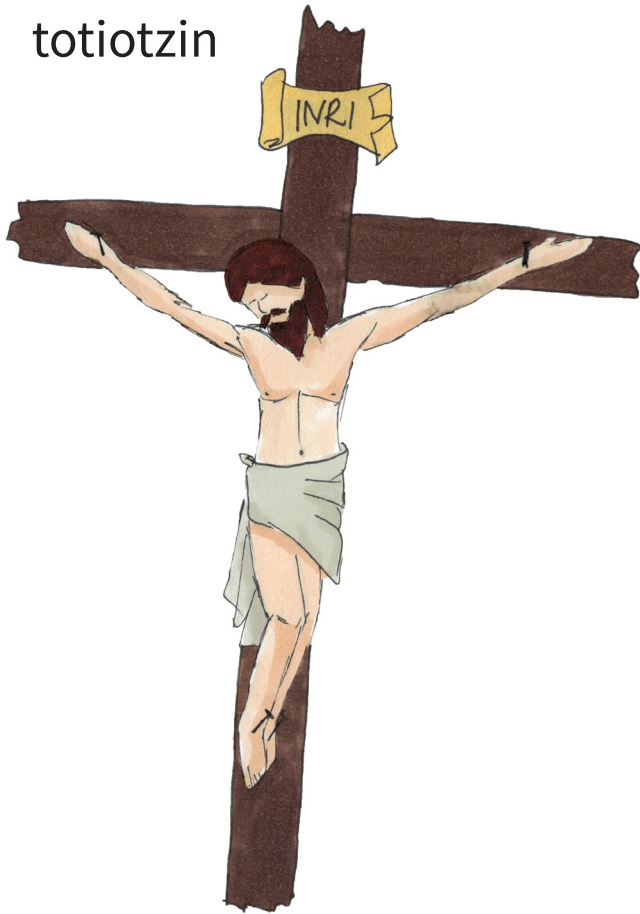
tlatiochihualatl



tonantzin



totiotzin



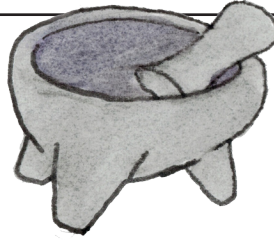


# Tlatequihuiliztl tlen ica tlacualchihuah

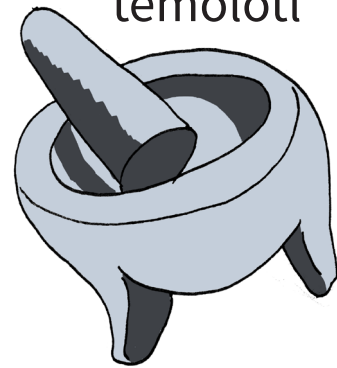
caxitl



chiltecaxitl



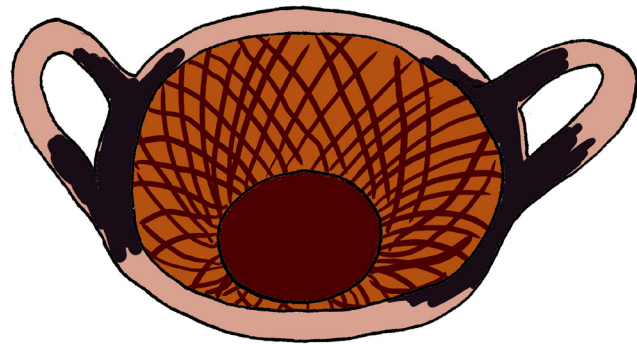
temolotl



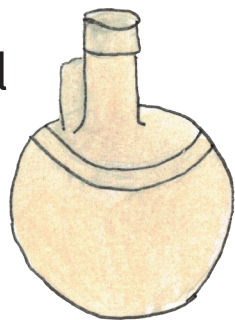
acomitl



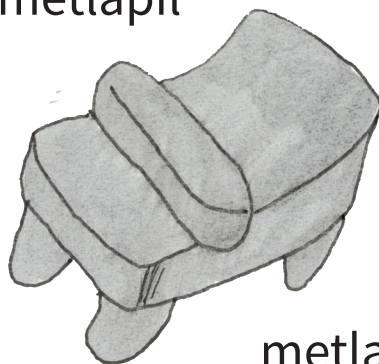
ahpaztl



comitl

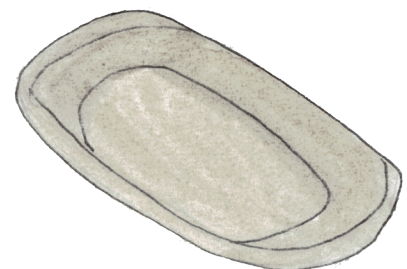


mametlapil



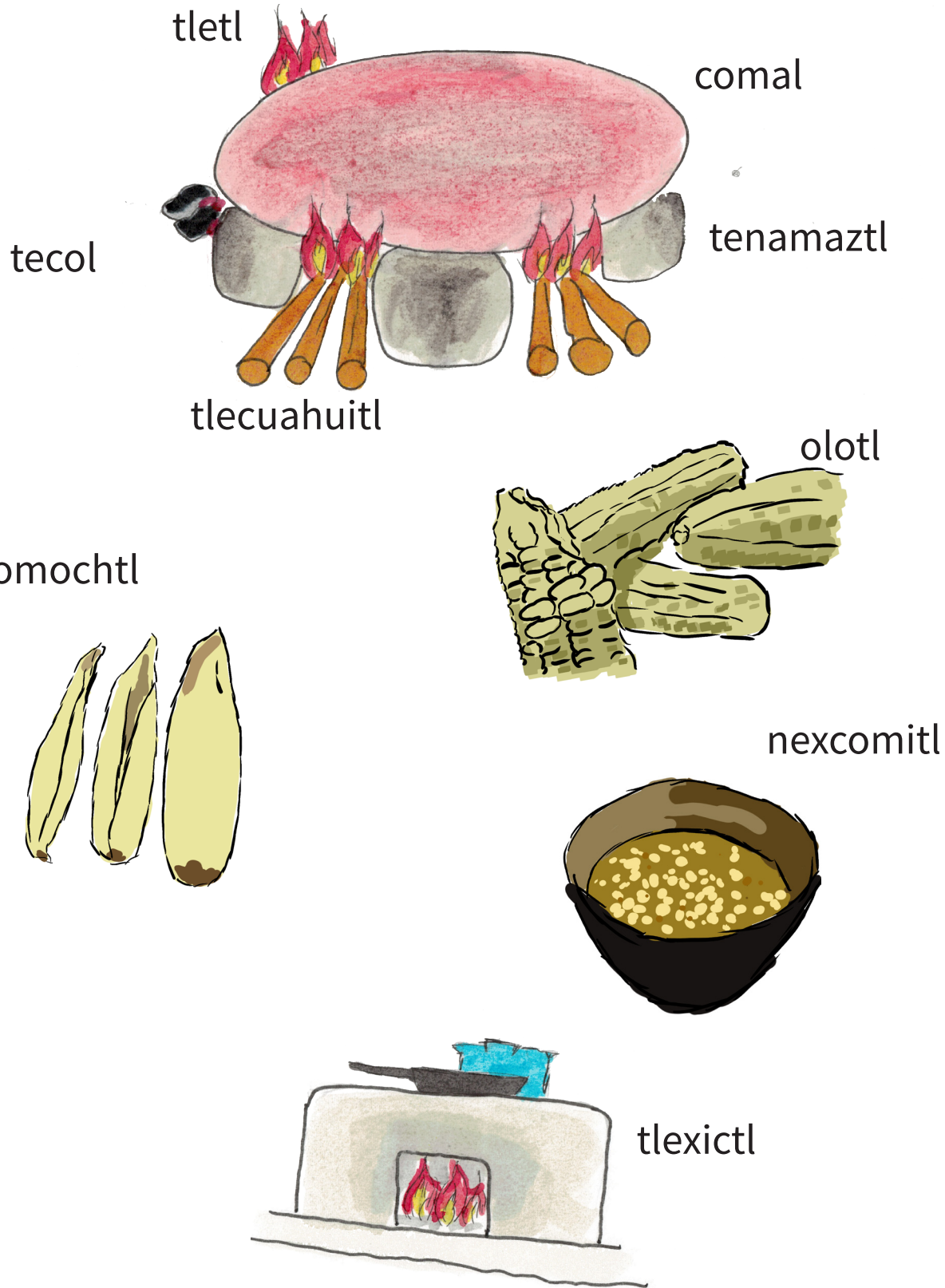
metlatl

cuauhxical





# Tlatequihuiliztl tlen ica tlacualchihuah



ompohual ihuan chicueyi



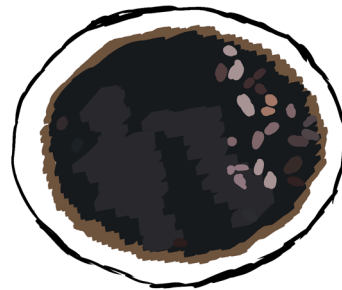




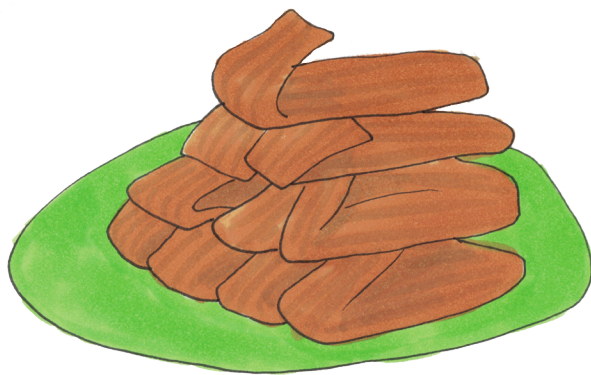
# Tlacualiztl

---

yemol



tamal



yelotl



chiltecaxitl



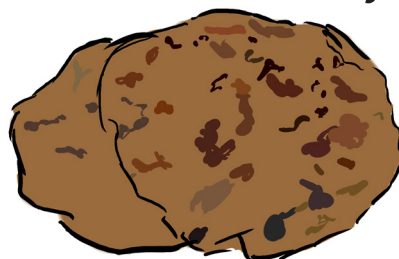




# Tlacualiztl



chiltlaxcal



yetlaxcal



izquitl



tamal





# Campa timochantlaliah

---



altepetzin

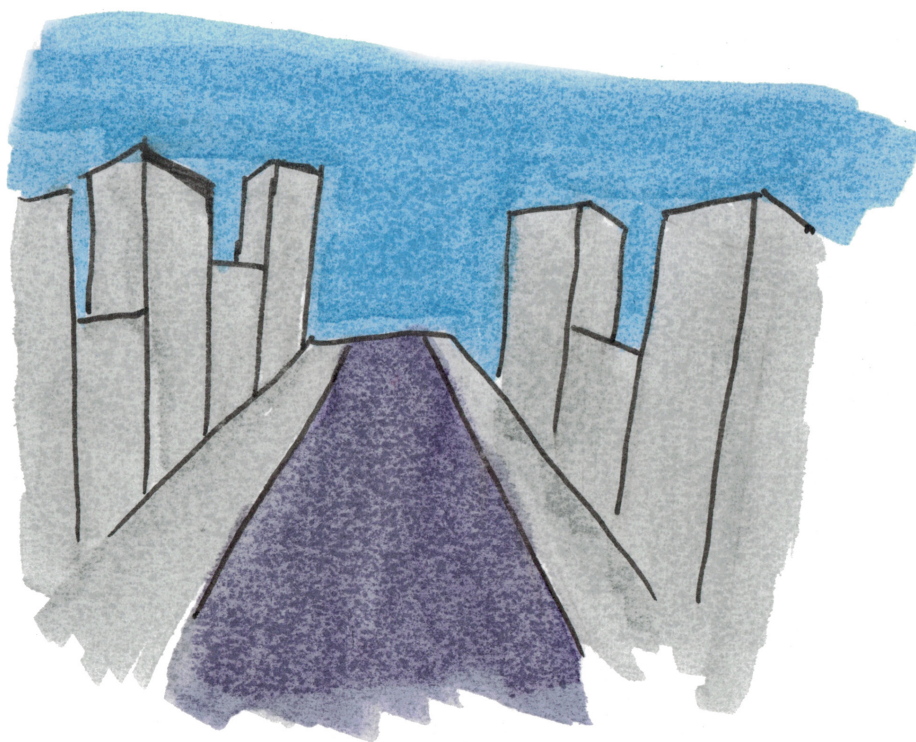




# Campa timochantlaliah

---

huei altepetl



---

ompohual ihuan mahtlactl ihuan ome

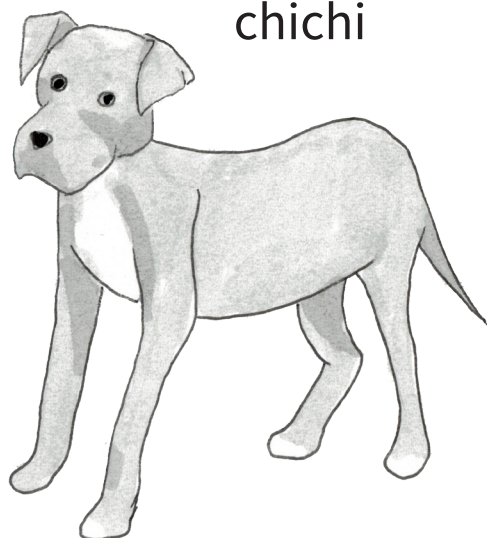




# Tlapiyalmeh tlen nemih callal

---

chichi



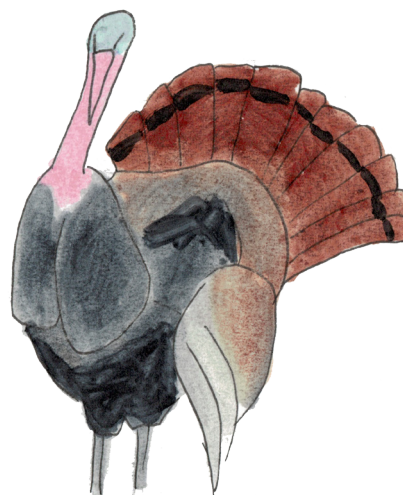
cuapelech



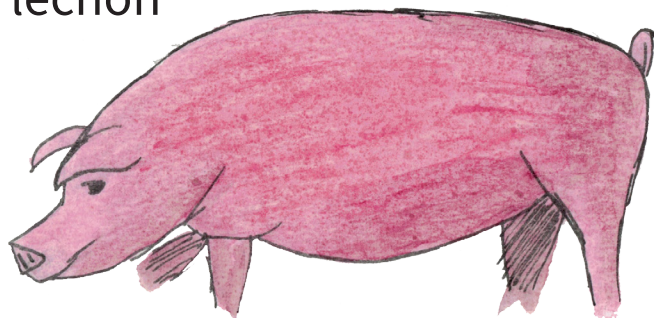
mizton



huexolotl



lechon

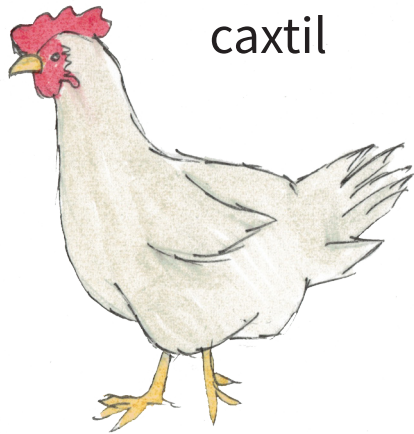




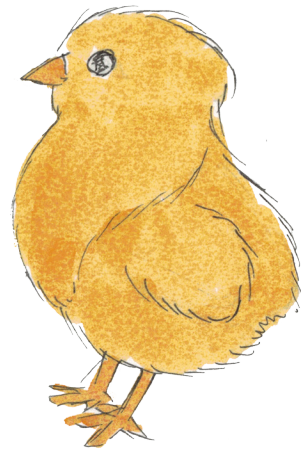


# Tlapiyalmeh tlen nemih callal

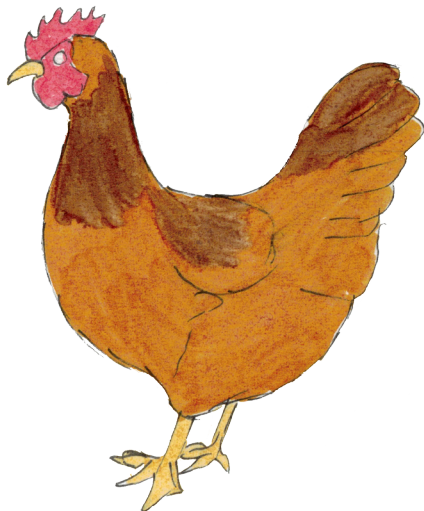
---



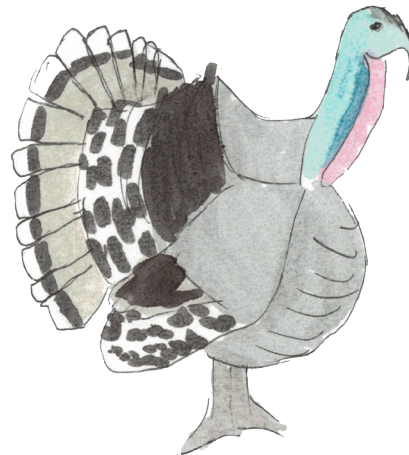
caxtil



piopiotzin



caxtiltenan



huexolotl





# In tlen ticchihuah tochan

---

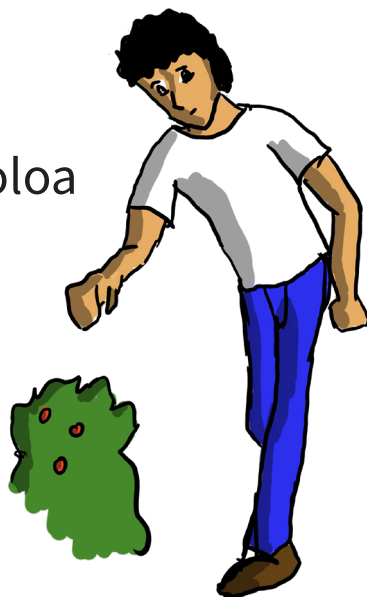
nictequi



niquilpia



nitlaololoa





# In tlen ticchihuahah tochan

---

nicpalehuia



nitlatzotzona





# In tlen ticchihuahah tochan

nimihtotia



nichoca



nicochi



ninehnemi



nicpitzoa



nicpahtia







# In tlen ticchihuahah tochan

nihza



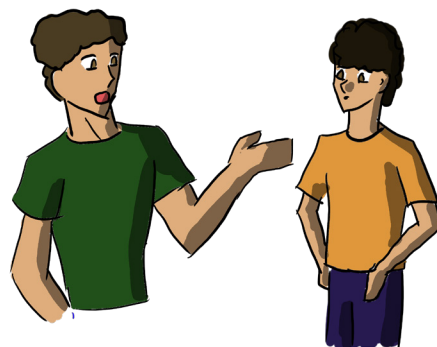
nimehua



nitlapahpa



niqui



niquillia

ompohual ihuan caxtol ihuan yeyi





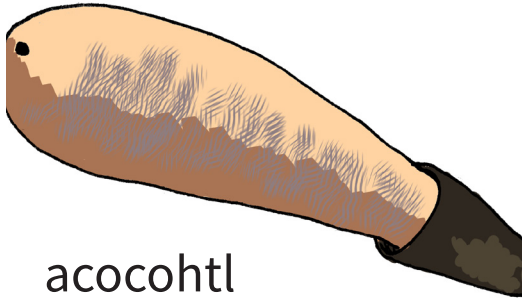
# Centli ipohual

milli





# Millah

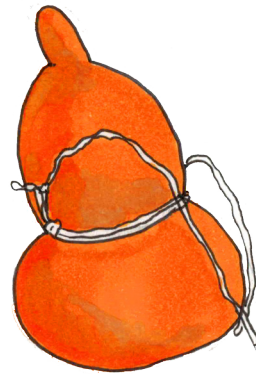


acocohtl

nitlayi



cuauhchiquihuitl



cuauhtecomatl



nitlapohpohua



cuauhtlatoctl



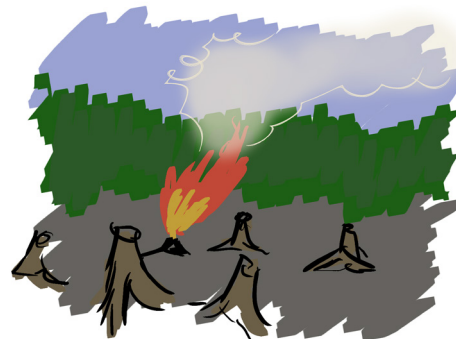


# Millah

nicuauhtequi



nitlahchinoa



nitlaxiuhhuana

toquiztl



nicenzaca

nipixca







# Centli ipohual

---



tlahuaquiztl





# Tlapohualiztl

---

motlapohuah



ilhuitl





# Tlapohualiztli

huehuemeh



tepetl



tlamanal

yeyipohual ihuan nahui





# Tequihuahmeh

---



tlayecanqueh

huei tlayecanqui



timocentliah







# Tequihuahmeh

---

titequitih



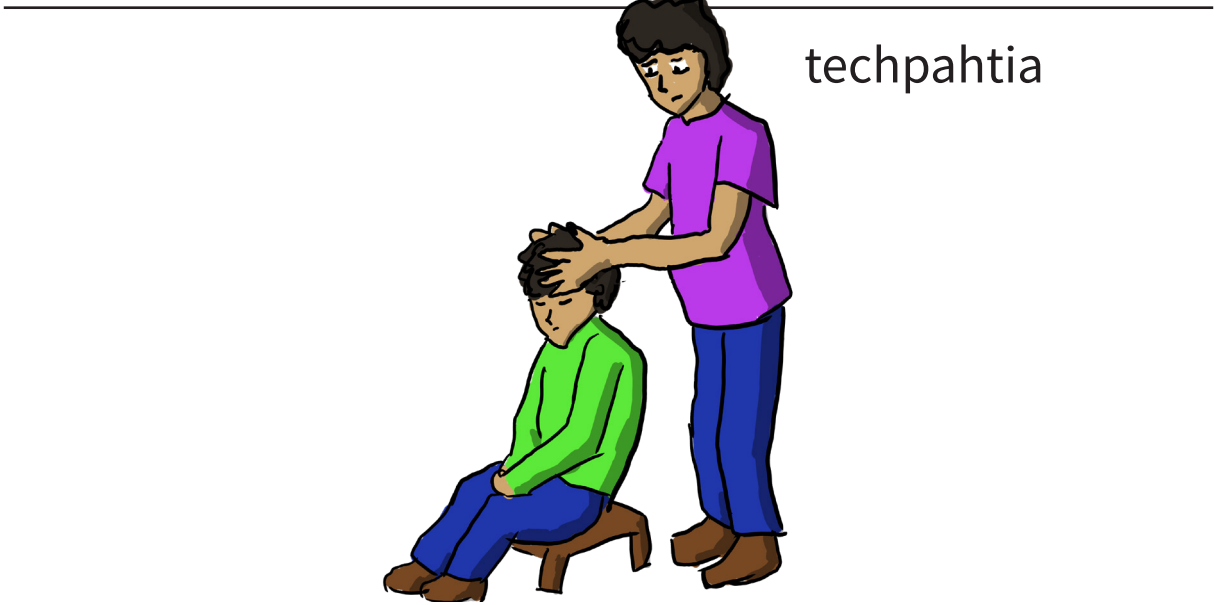
tlaxtlahua

topileh





# Toicnihuan





# In tlen ticchiuah temachtilcal

nicahcihcamati



niamapohua



nitlahcuiloa



nitemachtia

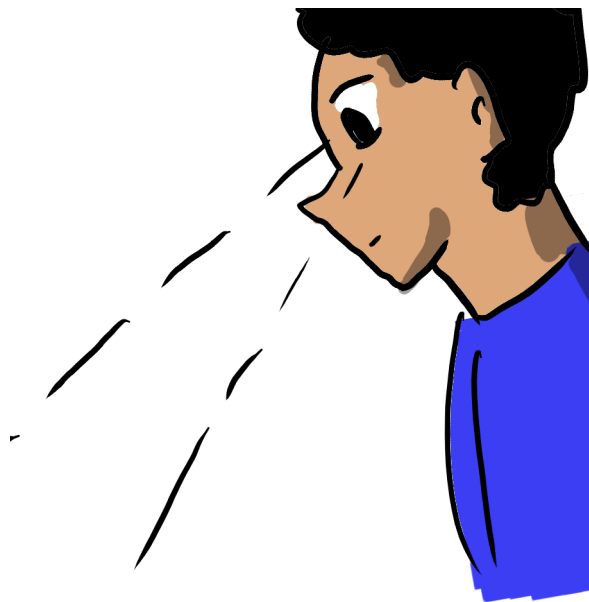
yeyipohual ihuan chicueyi





# In tlen ticchihuahah temachtilcal

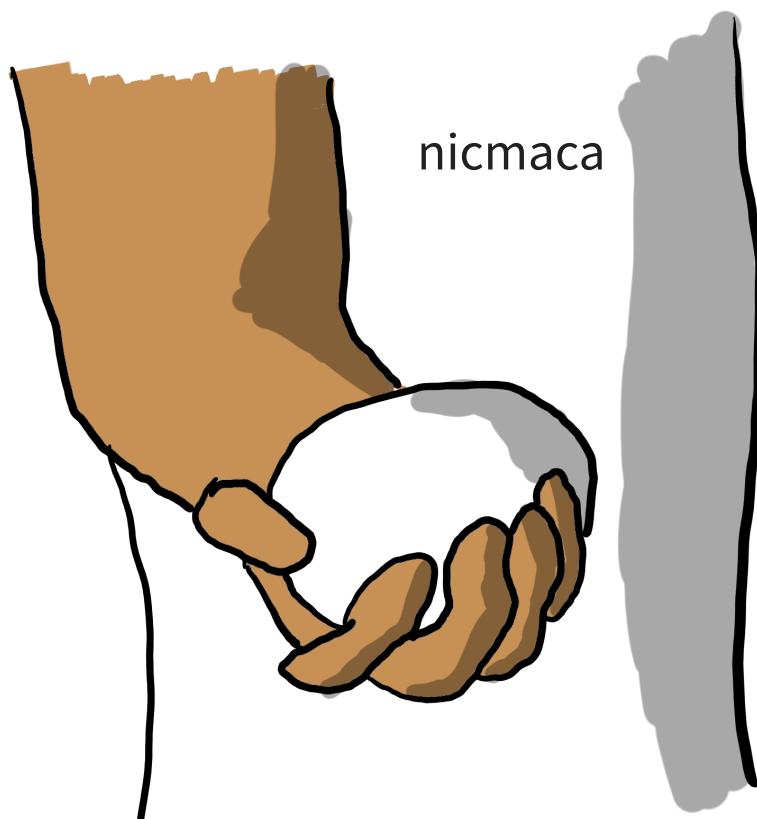
nitlachiya



nitlahtoa

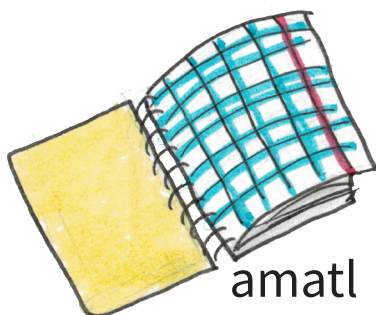


nicmaca

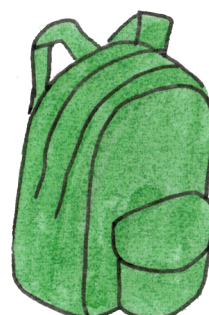




# Temachtilcal

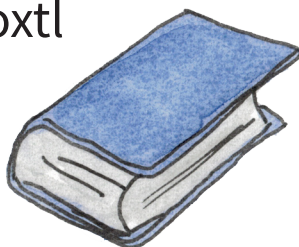


amatl

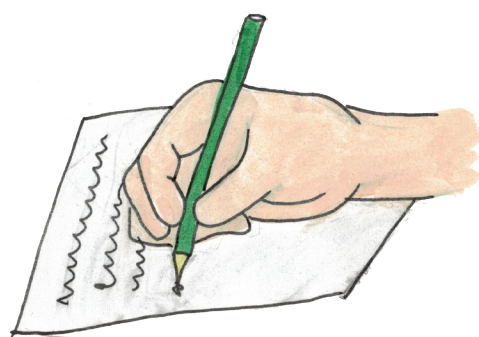


amoxpoxauhtl

amoxtl



chantequitl



tlahcuiloliztl



tlen nictequiltia  
temachtilcal



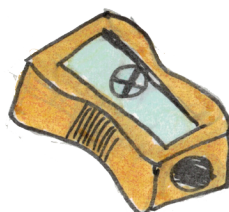




# Temachtilcal

---

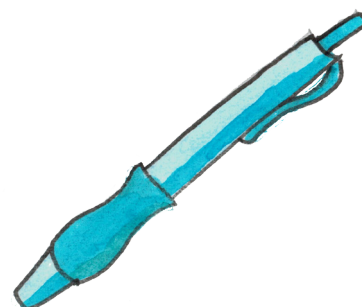
tlapohualiztl



tlen tlatentia

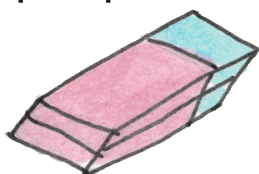


mahuiltiliztl



tlahcuiloltecol

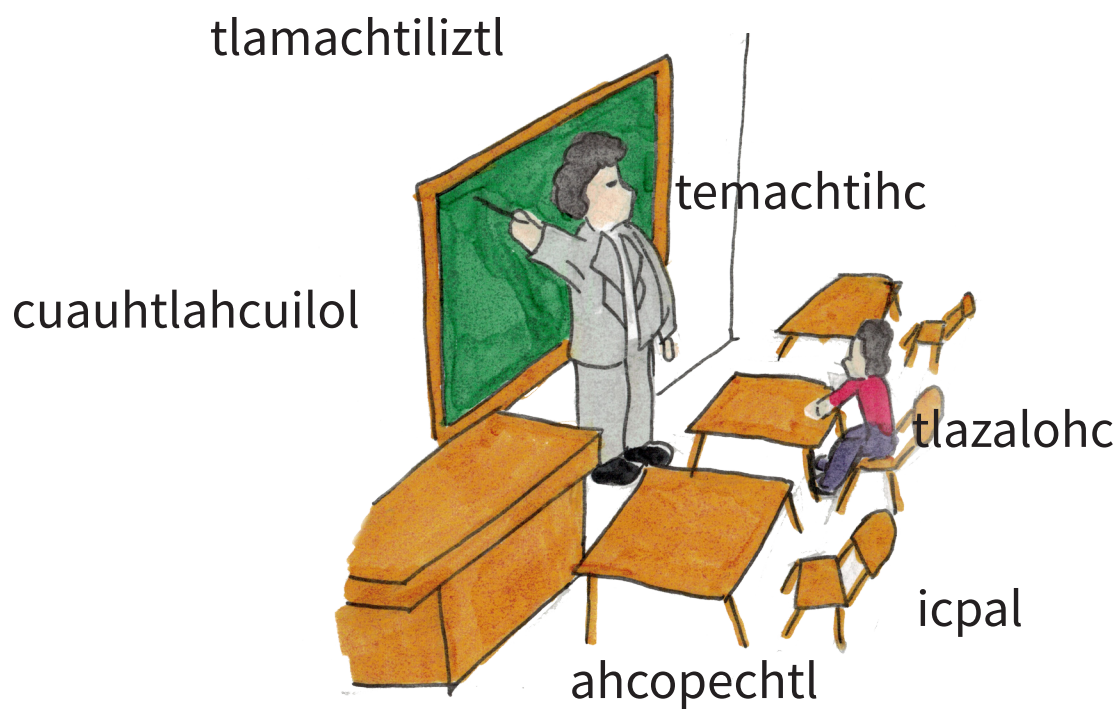
tlapohpouhc





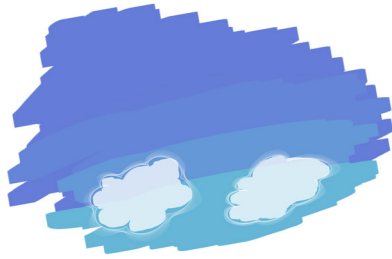
# Temachtilcal

---



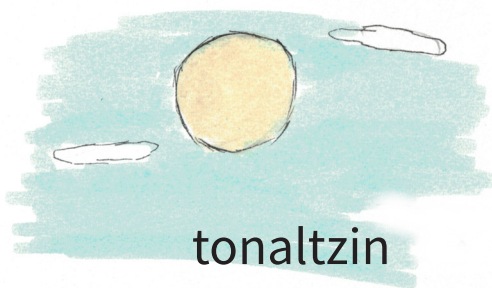


# Ilhuicatl



ilhuicatl

citlalin

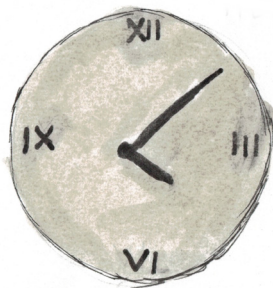


tonaltzin

metztli



cahuitl



mixtli



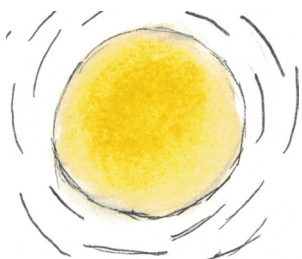


# Ilhuicatl

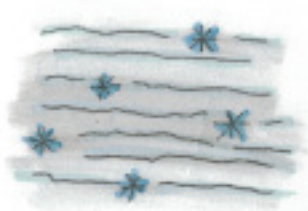


mocualoltia in tonaltzin

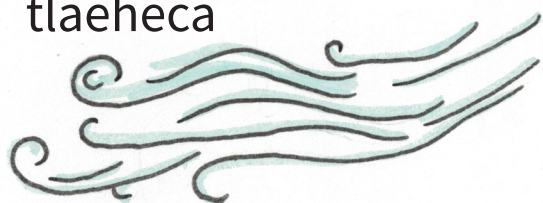
tona



cehua



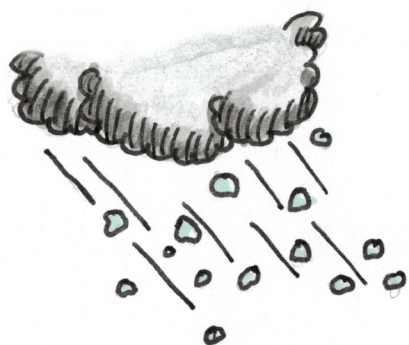
tlaeheca



quiyahui



tecihui



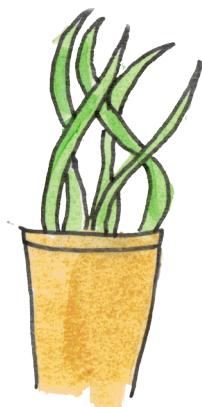
ahhuachihui





# Ixtlahuac

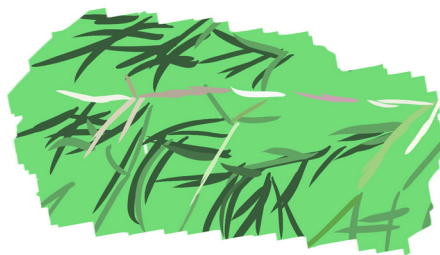
xihuitl



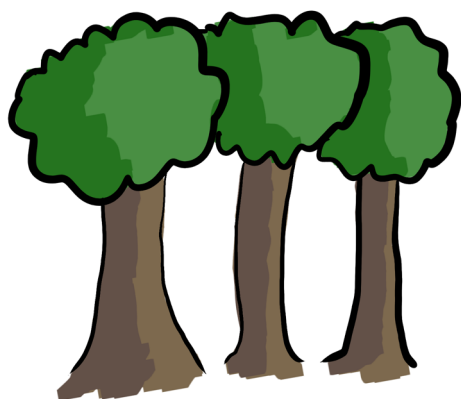
tetl



zacatl



cuauhmech



xochitl



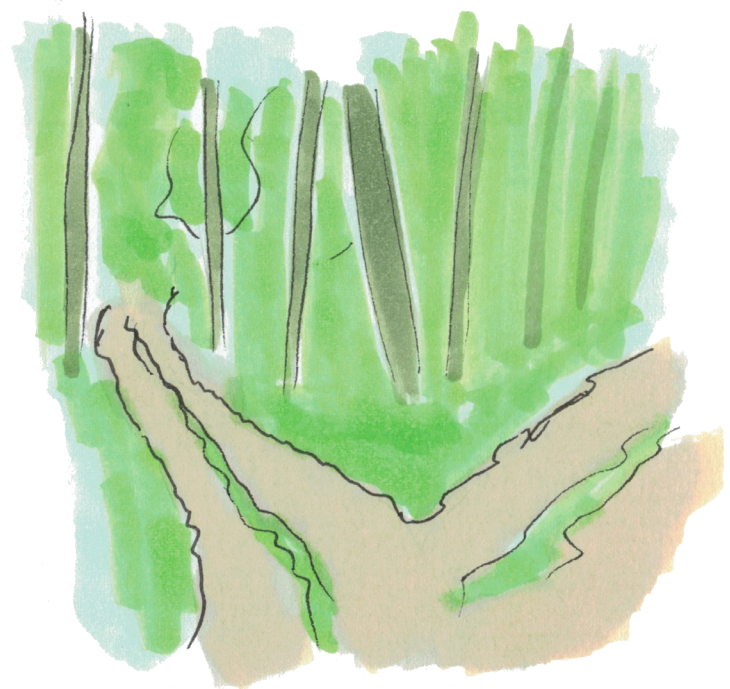




# Ohtli



huei ohtli



ohmaxal

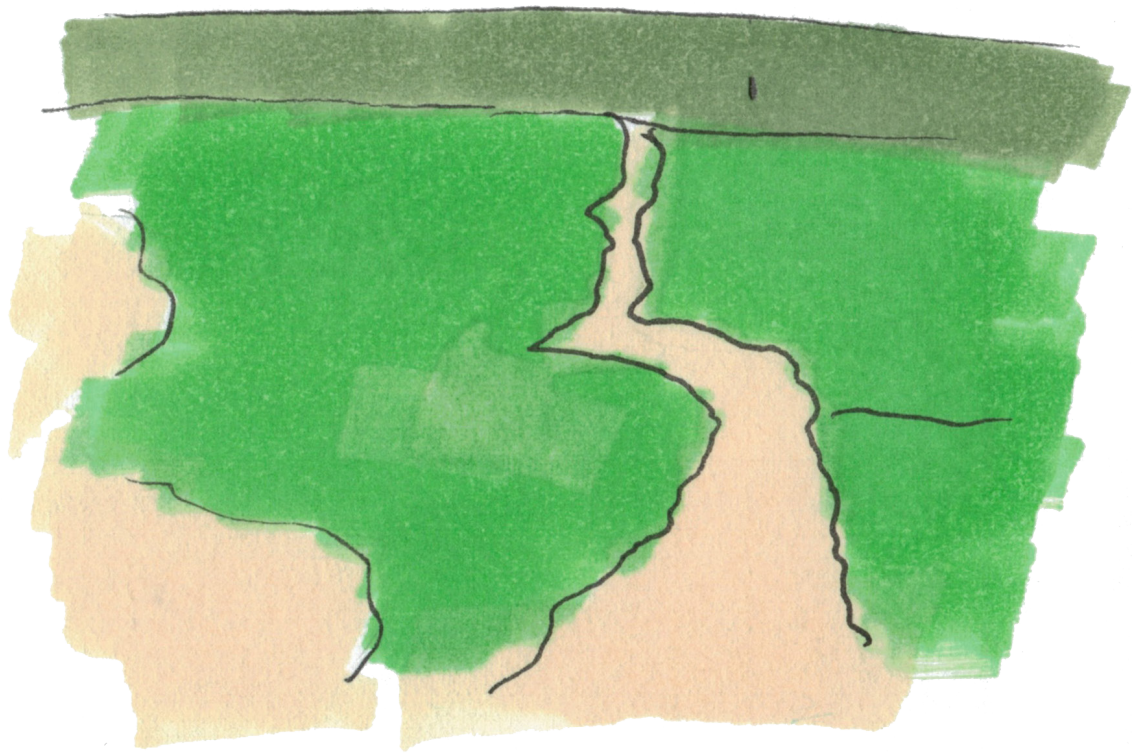
yeyipohual ihuan caxtol ihuan ce





# Ohtli

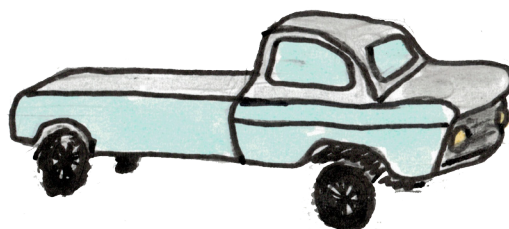
ohtli



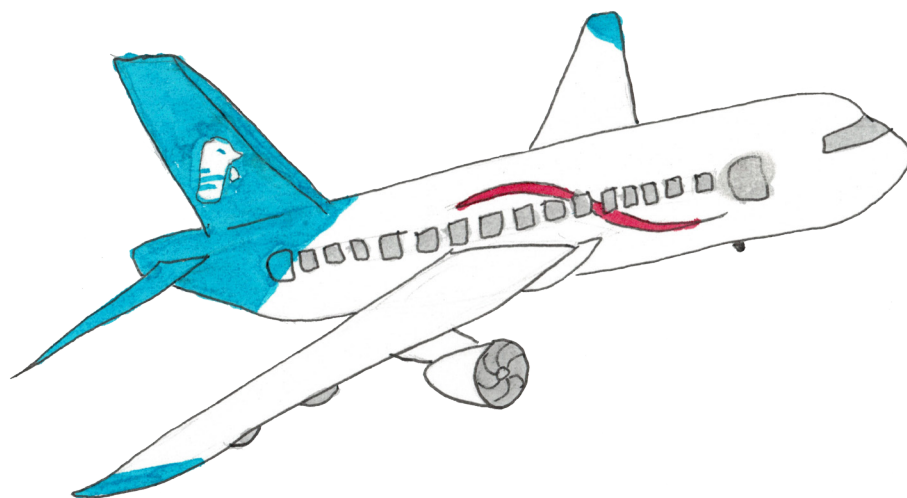


# Tlen techpanoltia canah

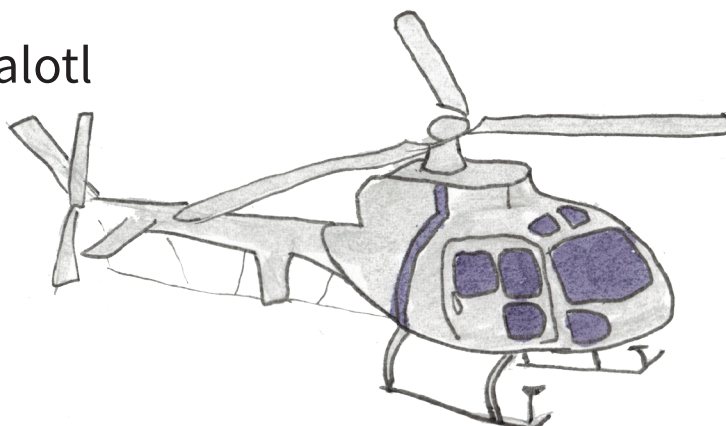
tepozcacalachtl



tepoztototl



tepozpapalotl



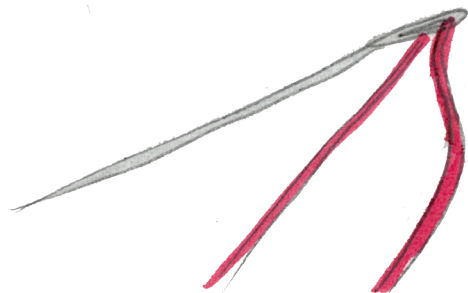
yeyipohual ihuan caxtol ihuan yeyi





# Huehcatlahtol

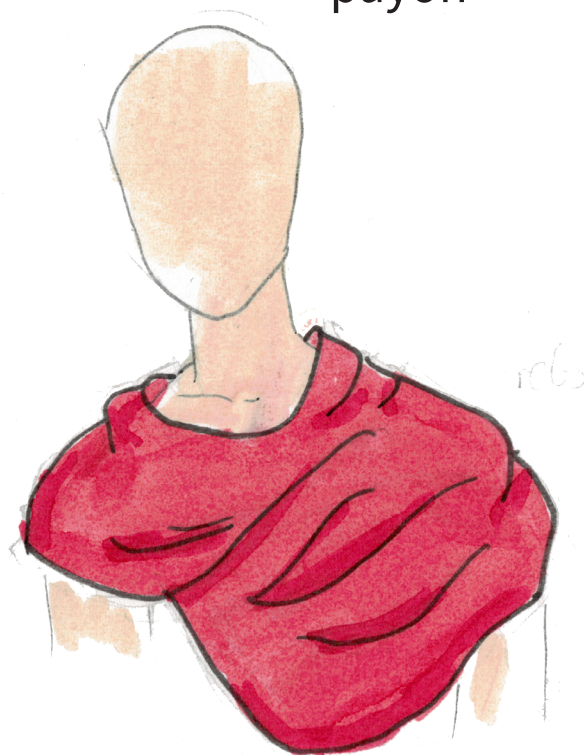
acoxah



coxtal



payoh

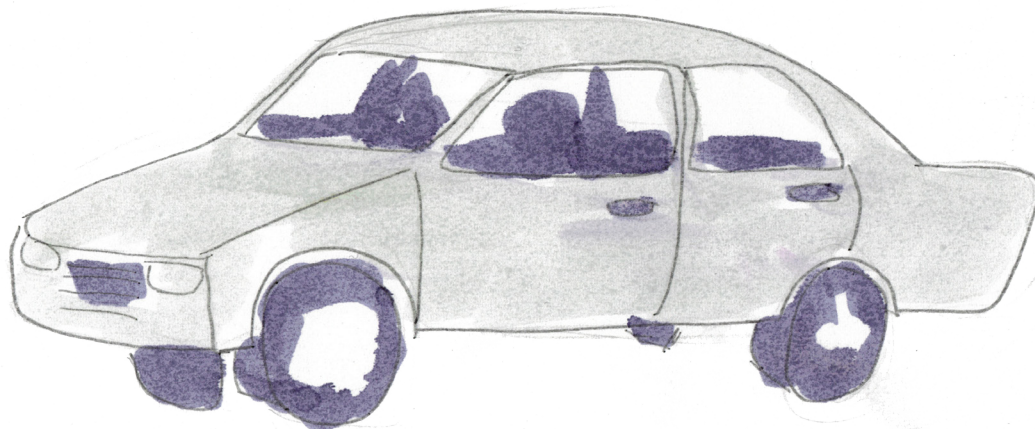




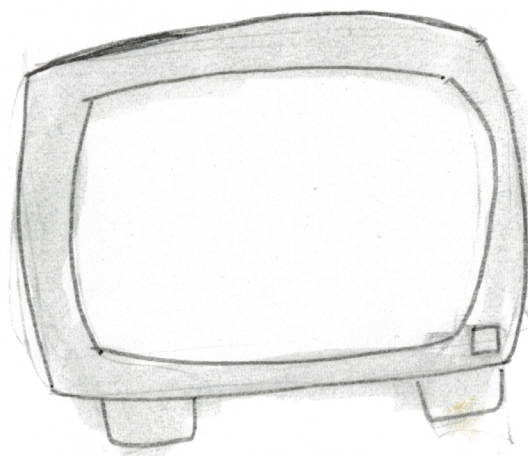


# Yancuic tlahtol

tepozcalachtl



tepoztlamahuizolli



temachtlcal







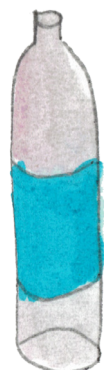
# Yancuic tlahtol

---



tzopelatl

tzopelic



tehuillotl

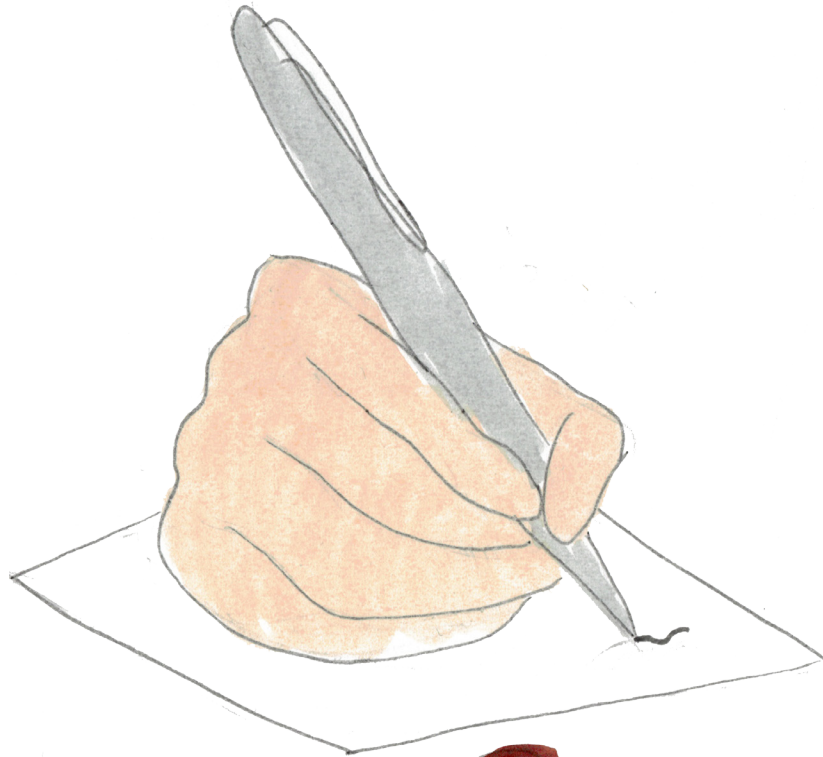




# Yancuic tlahtol

---

nimomachyotia



tlatzotzonal



---

nauhpothual ihuan ome

