

Kamanalixkopinkayotl  
tlen nauatlajtoli  
uan koxtekatlajtoli  
(Huasteca Potosina)

Lejkix káw k'al i t'iplab,  
ti dhakchám ani ti Tének  
kawintaláb  
(Huasteca Potosina)

Elwira Dexter-Sobkowiak  
Luis Flores Martínez  
Joanna Maryniak  
Pedro Ríos Cervantes

Kamanalixkopinkayotl tlen nauatlajtoli uan  
koxtekatljtoli / Elwira Dexter-Sobkowiak, Luis  
Flores Martínez, Joanna Maryniak, Pedro Ríos  
Cervantes

Amoxmekayotl: © Totlahtol

Amoxmekayopil: © Toconejuan

Amoxmekayotl tlayakaninij: Justyna Olko, John  
Sullivan

© Elwira Dexter-Sobkowiak, Luis Flores Martínez,  
Joanna Maryniak, Pedro Ríos Cervantes

© Ueyi kaltlamachtilistli Varsovia,  
Facultad de “Artes Liberales”  
ISBN: 978-83-67605-28-1  
ISBN pdf online: 978-83-67605-29-8  
Varsovia 2025

Ni amoxtli moixtlaua ipan se tlapaleuili katli  
temaka El Consejo Europeo de Investigación (CEI) -  
Programa de Investigación e Innovación Horizonte  
2020 de la Unión Europea (Acuerdo de  
subvención n.º 101002696), uan nojkia se tlapaleuili  
katli temaka Fundación “Instituto Artes Liberales”

Amoxtli tlayakanketl: © Elwira Dexter-Sobkowiak

Tlamachtijketl koxtekatljtoli: © Luis Flores  
Martínez

Tlamachtijketl nauatlajtoli: © Pedro Ríos Cervantes

Ajke tloxajqui, kikualchijchijki iisuaj amoxtli iuan  
ipeyaj: © Joanna Maryniak

Tlaikopinalistli katli kiixpantiya amoxmekayotl  
“Totlahtol” uan amoxmekayopil “Toconejuan”:  
© Martha Elena Ramírez Oropeza

Lejkix káw k'al i t'iplab, ti dhakchám ani ti Tének  
kawintaláb / Elwira Dexter-Sobkowiak, Luis Flores  
Martínez, Joanna Maryniak, Pedro Ríos Cervantes

Junkudh nik'adh dhuchadh úw: © Totlahtol

Tsakam nik'adh dhuchadh úw: © Toconejuan

T'ojol nik'adh dhuchadh úw: Justyna Olko, John  
Sullivan

© Elwira Dexter-Sobkowiak, Luis Flores Martínez,  
Joanna Maryniak, Pedro Ríos Cervantes

© Atáj exobintaláb axi ti Varsovia,  
Facultad de “Artes Liberales”  
ISBN: 978-83-67605-28-1  
ISBN pdf online: 978-83-67605-29-8  
Varsovia 2025

Axé' xi dhuchadh úw ts'ejkan k'al in tolmixtal an Conse-  
jo Europeo de Investigación (CEI) - Programa de Investi-  
gación e Innovación Horizonte 2020 de la Unión Europea  
(Acuerdo de subvención n.º 101002696), ani k'al in  
tolmixtal an Fundación “Instituto Artes Liberales”

T'ojom dhuchadh úw: © Elwira Dexter-Sobkowiak

Tének exobchix: © Luis Flores Martínez

Dhakchám exobchix: © Pedro Ríos Cervantes

An t'iplab, in t'iplabil an nik'adh dhuchadh úw ni nin wal  
an dhuchlab: © Joanna Maryniak

Tiplab olnomtaláb Totlahtol y Toconejuan:  
© Martha Elena Ramírez Oropeza



Amoxmekayotl Totlahtol  
Junkudh nik'adh dhuchadh úw Totlahtol



Amoxmekayopil Toconejuan  
Tsakam nik'adh dhuchadh úw Toconejuan



Kamanalixkopinkayotl  
tlen nauatlajtoli  
uan koxtekatlajtoli  
(Huasteca Potosina)

Lejkix káw k'al i t'iplab,  
ti dhakchám ani ti Tének  
kawintaláb  
(Huasteca Potosina)

Elwira Dexter-Sobkowiak  
Luis Flores Martínez  
Joanna Maryniak  
Pedro Ríos Cervantes

Ueyi kaltlamachtlistli Varsovia  
Facultad de "Artes Liberales"

Atáj exobintaláb axi ti Varsovia,  
Facultad de "Artes Liberales"

# Tlapeualnextilistli

---

Ni Koxtekapantlali momelaua ika nechka kampa moojtiya ajakatl, uan kampa moyaualoa ni Tomexkotlal, kampa tlauel tepeyo. Kampa momelaua eltok ueuekapantepetl uan kuayo, tlatotonikuantlakamauak. Ni se kampa eltok miak tlamantli, ke tlapiyalmej, uan kuatitlantlakuali uan tlatojtli.

Ni Koxtekapantlali elkise ojtli tlen maseualmej katlin ualajkej tlen ueuejka chanejkej, ika ajakatipan monamikij Tomexkotlal. Tlauel oui tijmachilisej miakij maseualmej katlin ininkamanal, tlen katlin uejkajtok tonali, tlen kamanaltinij nauamej uan koxtekamej uan otomimej iuan totonakamej uan sekinok maseualmej. Kamanali tenek ni ualaj kotonkayotl tlen itokax maya, tlen katlin tonali yauij miakixkej tlen ni Koxtekapantlali.

Seyok maseualmej katlin tlamiakilijkej ni nauamej, katlin mosemoyajkej ipan Mexkotlali. Ni Koxtekapantlali kipixtoya sentik tlalnamikili, pampa kipixtoya se inintekitikan tlatskijtoya ipan Mexkotlali, uan teipan keman kininuilankej uan kisejkonojkej ininuaya Mexkomaseualmej, katlin mouantitoyaj. Uan miak teipan mokatiualajkej ipan ni Koxtekapantlali uan ueyixkej tlen Mexko

uan mokauakoj ipan Koxtekapantlali ipan tlajko ueyij tonalij ipan kaxtolij xiuimej uan tlen kampa asikoj analimej tlaixpanokoj.

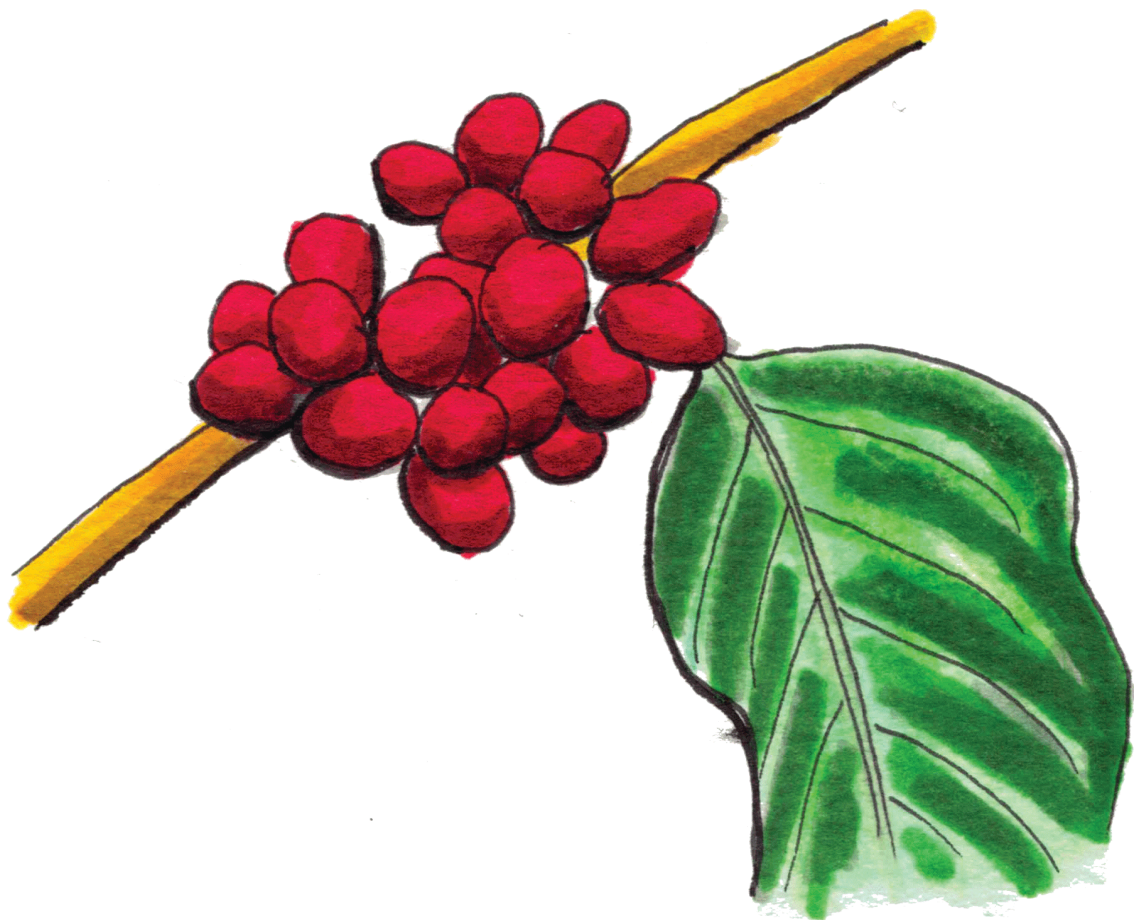
Ni Koxtekapantlali amo tlen kipiya amoxtli, uan nojkia amo momati nochi katlin panok katlin uelaman nesi katlin eltok miak maseualmej itstoyaj ipan ni Koxtekapantlali, tlen altepemej katlin kiyaualoaj ni Koxtekapantlali. Ipan Tamtok, amo uejka Tamuin, eltok se ueyitetl maseualixkopinkayotl itokax 'La Sacerdotisa' pan kaxtiyakamali. Ni se tetl tlauei uejkapan uan tlamachichiuali, yeyenij katlin tlauei ueyitetl, iuexka naui tlatamachichiuali iuekapanka, uan chikomej tlen ikoyajka, uan etiya sempouali uan chikomej tonelada, uan kipiya panoj ome tsonitli xiuitl. Ipan nopa tetl pa nesi eyi maseualmej uan kauekapan kipiya majtlaktli uan ome tlakuilolmej. Se teyouali itokax Tamohi, kiajsijkej se tetl tlachichiuali itokax Telpokakoxtekatl, katli kiixnextiya se telpokatl xolotl uan kuikuilitik. Ni telpokatl kiuika se konetl tlatskijtok pan se kuetlaxtli tetik, uan moijtoua, ni Sintektli.

Ipan ni tonali, katlin uejueyij iyokmej kamanaltij ipan ni Koxtekapantlali ipan ueyij tlatlatilankaj nauamej iuan koxtekamej. Katlin miakij nauakamanaltij momelauaj pan ni ueyi Koxtekapantlali ipan ueyij tlaltlankemej

inintokax Tamazunchale, Akauiyampan (Matlapa), Xilitlan, Ueuejpan (Huehuetlan), Uitstitlan (Tancanhuitz), Tampakan, Ayaualtipan (Coxcatlan), Achtlan (Axtlade Terrazas), San Maltin uan Tlapompomtitlan (Tampamolón Corona). Koxtekamej momelauaj ipan ni tlatilankemey: Akichtitlan (Aquismón), Uitstitlan uan Tepetlayo (Tanlajás), Xilitlan, San Antonio, San Vicente, Valles Altepetl iuan Tlapompomtitlan. Nochi katlin ni panok semoyajtli aman ni itstokey kamanaltij nauatl uan koxtekatl kakalikan tlen altepetl ueyi uan Mexko.

Ueli tikijtosey miak tlamantli katlin ixnesi ipan ni Koxtekapantlali. Miak katlin uechiuaj nauatl uan koxtekatl itstokey ipan teyoualmej kuetsitsin. Katlin antiuakali tlachiuali yaualtik ika sakatl uan apachtli, uan aman miakij kichiuaj ininchan ika texamitl uan teposisuatl. Nojkia pampa teyoualmej kipiayaj kaltlamachtlistli, tlen xochikaltlamachtlistli uan kampa peuaj, uan ika ome uan eyi tlamachtlistli. Sekinok teyoualmej kipiayaj san xochikaltlamachtlistli, uan kampa peuaj, uan ika ome tlamachtlistli. Nojkia teyoualmej kipiayaj texopechtli kampa mauiltiyaj, iuan tekikali kampa mosentiliaj, tlatokistli mochiuaj uan kiampa motomintiyaj.

Nojkia kitokaj nochi tlamantli katlin eli. Nojkia kininiskaltiyaj tlapiyalmej. Katlin ixnesi tlakuali mochiuaj chiltlaxkali, kentsin nakatl, uan etl, nojkia tamali uextik mimiltik, iuan tesistli ipan isuatl, nojkia xamitl, atoli uan tekoko. Tlen miak kuatlakayomej ueli mochiuaj tsopelikatl uan sesekatl, uan katlin moijij totonik miak kafen.



Tekitl, tlen katlin mochiuaj tekitl mojmotlaj, nojkia mochiuaj iluipakilistli, uan se ueyi iluitl mochiuaj itokax Mikailuitl. Mochiuaj uitoli ika ayitochkuitlapili uan sempoualxochitl, uan tlapechko nopan uitoli motlaliyaj nochi tlakuali katlin kikuatinenkej. Nojkia motlaliyaj ixkopinkayotl katlin polijkeja. Sempouali uan matlajtli uan se tlajkotonaj motepeuaj xochitl pan ojtli machiyotl moseliyaj mijkemey. Ipan ni iluitl ni tonali mijtotiyaj momekoj chichiuaj kiixkopinaj tlakatekolotl, mosiuaj chichiuaj uan ueuentsitsin.







Uan sekin yoyokanaltij yauij motlatlatiyaj ipan texajkali kampa kiuikaj tlatikuinili uan tlatlanij tekikayotl, kamanaltij ika teyomej kiampa tlaelis. Eltok patsin se altepetl itokax Uetsiuayan uan texajkali kampa yauij itokax Xomokonko. Nojkia eltok itokax uitonkauikatl, tlatsonaj ika se violín, se kuakakauatl ueyi uan se tsikitetsin. Mochiuaj sajsekoya itokax uapalixko.

Koxtekamej cihuamej monextiyaj ika ininyoyon miak tlaxauali uan ika ininkechken tlamachiuali uan ininixikakjui uan ininkoskaj. Uan tlakamej ininyoyon nochi chipauak uan inintsontsakaj uan ininitakaj aakuikaj uan ininixikakjui.

Tekitlamachiualistli pan ni altepetl moyaualojtok mosoj, ipan tlamachtlistli sokitl uan kuauitl. Tekitlamachilistli ikpatl mosoj kechkemitl, tlakemitl, xaketajtli, ixipepechtli, tlaijtij tetonili, mamali, tlamakuiyanij. Ika sokitl mochiuaj uejueyi xalomej, atsakuilijketl, chachapalmej, pantlatokaj, komalmej, kaximej uan tlapitsali. Tlamachiualmej ika apachtli mochiuaj tsontsakayotl, petlatl, tlaxkalaakuiketl, ayakachmej, uan miak tlamantli. Uan sekin nanamej kichiuaj yeyekchiuali ika kafenyoli uan sekinok miak kuatlajtli.

Kiampa tiitstokej pan ni Koxtekapantlali, kampa tijpiyaj noja uejueyij kuauitl, kuatlakayotl, nochi eli, uan tikiiyoltilanaj kuali ajakatl.

Pedro Ríos Cervantes



## Tejwa'medhomtaláb

---

An Tének tsabál k'wajat tin tsayléel kalel k'icháj an Labtóm Tsabál, k'wajat tonidh k'al an lejem “Golfo de México” ani an yantolom ts'enchik xi bijidh “Sierra Madre Oriental”. An tsabál in kwa'al an alte' te'lom ju'taj lej kalel an pajul, pel jún i k'ak' ani ats' tsabál. Al axi pejach an tsabál tekedh wa'ats yán i pilchik ko'nél ani i ts'ojól; tejé' ti Labtom, al an Tének tsabál játs ju'taj wa'ats pilchik i ts'ojól ani i ko'nél.

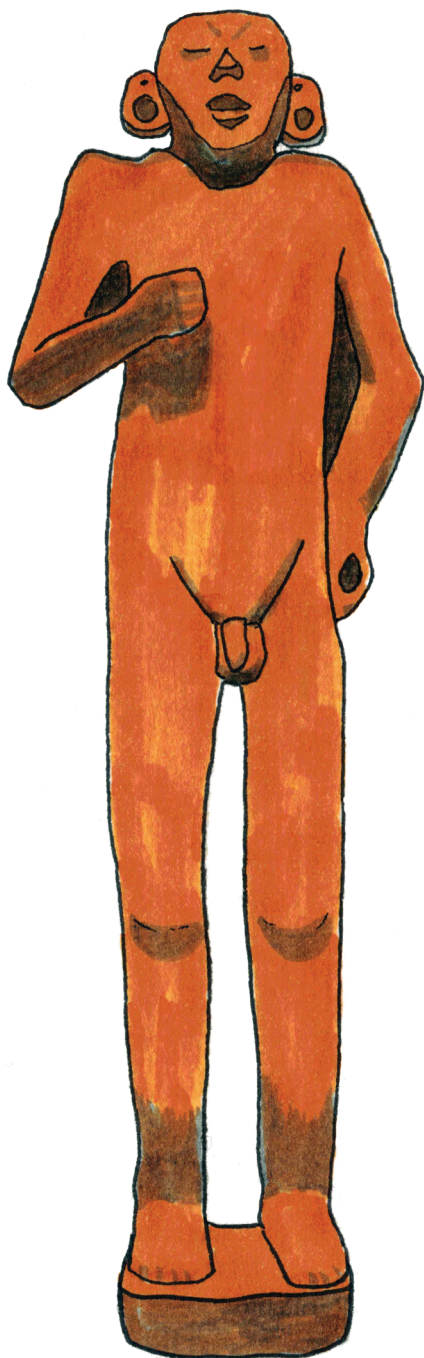
Al an Tének tsabál junkun pilchik i bel ju'taj u tamkunal an tsabál Mesoamérica ani in tsayléel an Labtom Tsabál; jaxtám an k'wajilchik ma ti biyál in ko'oychik ka junjudh k'wajiy k'al pilchik i atiklab axi talchik al pilchik i kwencial. Ma ti biyal k'wajiychik ok'ox jún i kwene' “olmecoide”, an Tének, an dhakcham, an otomí, an totonaca ani pilchik i kwene' axi u belbelchik. An Tének kawintaláb pel jún i káw maya axi ma ti biyál lej in kwa'alak in tsapík al an Tének tsabál; jatsak an ok'ox kawintaláb al in tsayléel an Tének tsabál. Pil i kwene' jatsak an dhakcham, jun i kwene' uto-azteca. An Tének tsabál u t'ilomak k'al an eyalchik axi tin ts'ejeltal an Labtom, ma tamti yabayej atamejchik k'al an aztecas, ejtil k'al an eyalchik xi ti Teotihuacán, Tula, Cholula ani Tenochtitlán. In exbádh an dhakchám káw puwey al an Tének tsabál talbél tan ti an Tenekchik atáj k'al an azteca ma tamti

ulitschik an lab ti k'ij (siglo) XV.

An Tének tsabál yab in kwa'al i biyál dhuchlal, yab jayej exobnamej an biyál t'ujub ts'ejkanél, ejtíl an exobintaláb axi t'ajamej al pilchik i tsabál tejé' ti Labtom. An biyál t'ajbiláb jatsak in k'imá' pilchik i kwenchal axi u k'wajilakchik al pikchik i kwene' tin tonídh an Tének tsabál. Tsab i biyál kwene' lej exladh ma xi xo': Tamtok ani Tamohí, axe'chik k'wajat utat ti pulik itse' Tampaón ti Tamuín. Jun tsakam pejach ti Tamtok tsajan abal ka exobnáj ma xi xo'. Taná' elan jún i t'ajbiláb t'ujub axi lej exbadh, axi bijiyat "monumento 32". Játs an t'ujub xi lej pulik elamej tejé' ti Mesoamérica, in puwél pel tsé' metro k'al búk metro in nakél, ani in alem utat 27 toneladas, in kwa'al tsáb mil tamub ti ts'ejkamej. Tan t'ipodh óx i atikláb ani ebál wa'ats laju tsáb i dhuchlab, po yab exladh jant'oj in le' kin uluw.



An biyál tsabál axi exladh in k'al an biyál Tének pel axi bijidh Tamohí. Te' elan an t'ojodh t'ujub xi bijidh "El adolescente huasteco" axi in t'ipoyal jún i kwitól inik k'ot'idh ani ts'o'madh tin t'u'ul. Tin kux in kitmík junakej i atikláb axi uluwáb pel a Dhipák, in ejatal an idhidh, jatsak an ok'ox xi lej k'ak'nadh k'al an Ténekchik.



Xowé', wa'ats ti Tének tsabál tsáb i exbadh kwene': an dhakchám ani an Tének. Yán i dhakchamchik u k'wajilchik tin tsayléel an Tének tsabál, al an pejach tsabál: Tamazunchale, Matlapa, Xilitla, Huehuetlan, Tancanhuitz, Tampacan, Coxcatlan, Axtla de Terrazas, San Martín Chalchicuautla y Tampamolón Corona. An Tenekchik u k'wajilchik ti: Aquismón, Tancanhuitz, Tanlajás, Xilitla, San Antonio, San Vicente Tancuayalab, Ciudad Valles y Tampamolón

Corona. Po k'al an alimtaláb wa'ats i k'wajilchik axi kalnekchik ti k'wajíl ti bichow, ejtíl Monterrey ani tin ts'ejtaltal an Labtom tsabál.

U awil ki tejwa'medha' yan jant'oj axi in t'ajal ki puwenchij an Tének t'ajbiláb axi xo' wa'ats ti Tének tsabál. Yan i Tének ani dhakchám u k'wajilchik al i tsakam kwenchaláb. In k'imá'chik kwechodh, tsalmidh k'al jún i ts'upidh jaw'. An jaw' ts'ejkadh k'al i apats' o k'al in xekél an pakab. Xowé' an atiklabchik in mats'uyal in k'imá' k'al i block ani in paxk'iyal k'al i lámina. Al an kwenchaláb axi pakdha' wa'ats an atáj exobintaláb abal an elel pok'él (kínder), abal tsakamchik axi pakdha' (primaria) ani abal an kwitól inikchik ani pakdha' ts'ik'ách (secundaria ani preparatoria). Wa'ats i kwenchaláb in kwa'al an kínder ani an primaria ju'taj an exobintaláb u t'ajnal tin kawintal an tsakam ani ti lab. Wa'ats in kwa'alchik jún i kancha ju'taj u ubat'chik basketbol, ani in ko'yalchik jún i atáj ju'taj u kwentsinalchik abal kin t'aja' an tamkuntaláb.

An omláts tekedh yejenchidh abal ka ulits an tumín ani an k'a'pnél. U t'eyáb an idhidh, an k'alam, an tsiw', an its, an kapéj, cacahuate, lanáx, új, mango, utsun, it'adh, limón, chabcham, bek, pakab ani tsanak'w. An atiklabchik aniyej in beletnalchik an ko'nél. An k'apnéljats an baludh bakan k'al i tsanak'w, kexux, dhak'chok', új o t'u'lek res, an zacahuil (jún i pulik kwatsám axi bolmadh k'al i dhulup), dhak'chok'

tek'dhach al i dhulup, kwich, wat'ap, bolím ani an bok'ól. K'al an waliláb u awil ka ts'ejkáj i tsamamál tsi'madh ja' aniyej an mu'udh tsi'ik tsam abal kin tomolna' an k'ak' k'ij. An k'ak' tsi'madh ja' axi u lej uts'nal játs an kapéj

Po yab expidh wa'ats an t'ajbiláb axi t'ajnal chudhél chudhél. Aniyej wa'ats an ajib. An ajib axi lej exbadh játs an santorom, tam u ts'ejkanal jun i pulich axi u dhokbayáb ani u witsyáb k'al an k'uchidh wits. Tin alam an pulich u punuwáb an santochik, ani an ts'akchixtaláb ejtil an tsi'madh bokól, an kwatsám, an uts'nél, waliláb, ani an tsi'iktaláb (dulce). Ti tsabál u punuwáb an kandela, an pajuxtaláb, an jom, ani jún i bel k'al an k'uchidh wits abal ka ulitschik an tsa'bix axi ok'xinchik ti bel. Al an santorom u kalelchik an bixom xi bijidh huehues, pelchik i atikláb axi u lakbinal ti at'ax inik (teneklab), o ti mamláb. Xowe' an atiklabchik in belál an cristianismo, po bel in t'ajalchik an biyál Tének t'ajbiláb. Ejtíl in t'ajalchik an ts'akchixtaláb al an paxál, axe'chik lej k'ak'nadh, ejtíl an paxál in k'ima' an ik' ani an wa'tsintaláb xi k'wajat utat ti Huichihuayán. An k'aniláb axi tana' u t'enedh k'al óx i atikláb. An atiklabchik in bixnál an huapango al an ajib xi bijidh huapangeada. Po aniyej wa'ats an Tének son, ejtil an Tsakam Son, An pulik Son, An Malin Son ani pilchik más; axe'chik u taknal al an ajib.



An k'wajilchik in kwa'alchik in toltomil axi exladh abal jats in k'al an Tének k'wajíl. An mimlabchik u toltominal k'al jún in t'unu' lakab, in kotón ani in dheyém axi witsidh k'al an chuklab.

An Tének mimlabchik in punuwalchik tin ok' an petobláb, pel jun i kwech xi ts'ejkadh k'al i pat kal bo' i pilchik muklab. In punuwalchik in ow, in ts'amuts' ani in pajab. Aniyej in chiyál in talega. An inik u lakbinal k'al in pat'éb ani in kot'on xi ts'ejkadh k'al i manta, in xumpalél, an morral ani in pajab.

An Tének t'ajbiláb játs an chuklab, an tek'dhach anam, ani an t'ojom te'. An toltom t'ajbilab in ts'ekalchik i watláb, an kotonláb, an sarape, an wik'láb, an rebozo,



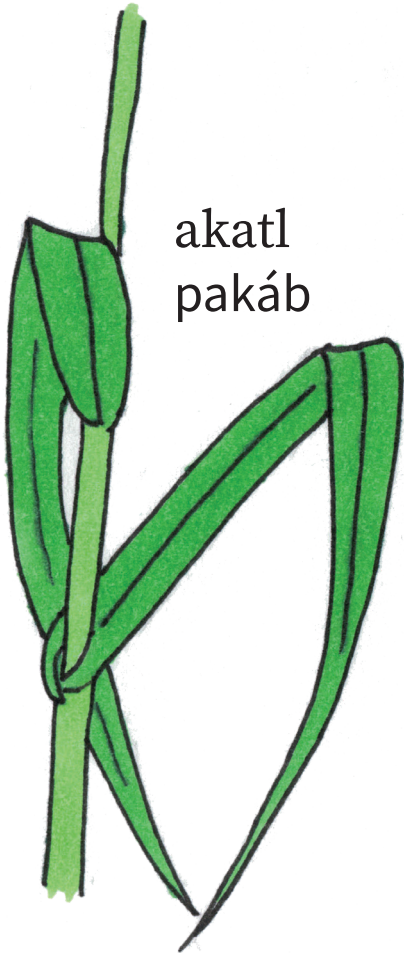


an koxtal, an k'wa'chim. K'al an tek'dhach anam u  
ts'ejkáb an pach, in t'eyáb an wits, an múl, an takab,  
an pajuxtaláb, an talab, ani pilchik i alabedhomtaláb.  
K'al an apats' u ts'ejkáb an xumpaleláb, an tat, an éx,  
an chinchín. An mimlabchik aniyejchik in ts'ejkál an  
ts'amuts'láb k'al in ichích an kapéj ani pilchik i ichlab.

Luis Flores Martínez

# Kuayo Alte'

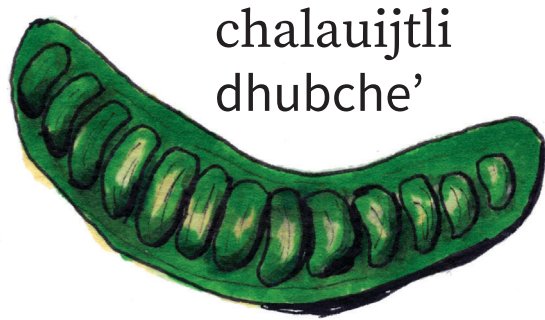
---



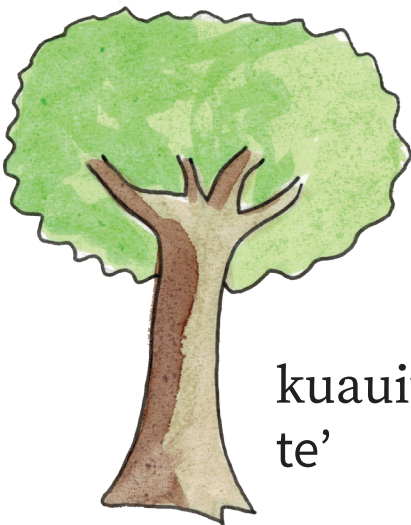
akatl  
pakáb



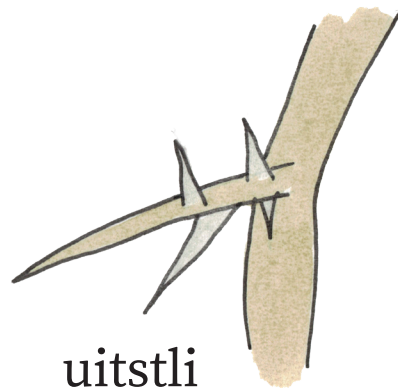
soyo  
dhuyu'



chalauijtli  
dhubche'



kuauitl  
te'



uitstli  
k'idh

# Kuayo Alte'

---

kuamekatl  
pajum ts'aj



kuatitlamitl  
alte'

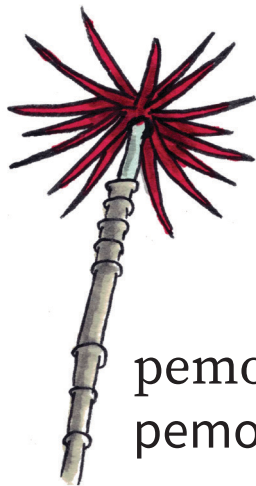


xiuitl  
ts'ojól

tepetl  
ts'en



tetl  
t'ujub



pemoch  
pemoch / jutuku'

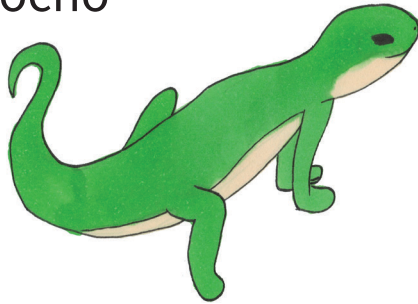
texajkali  
paxál



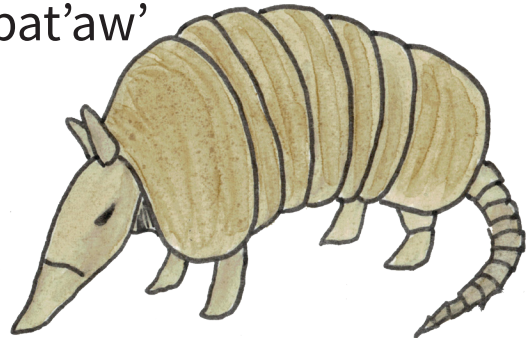
# Kuatitlantlapiyalmej Dhimalóm ko'nél

---

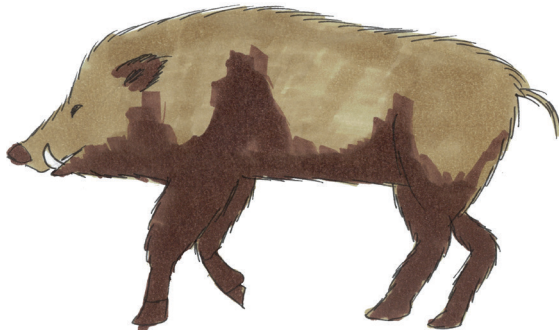
topi / axilin  
ocho'



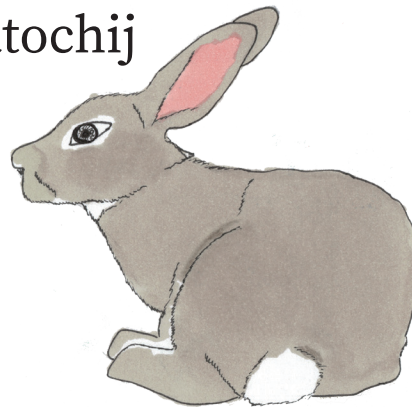
ayotochi  
bat'aw'



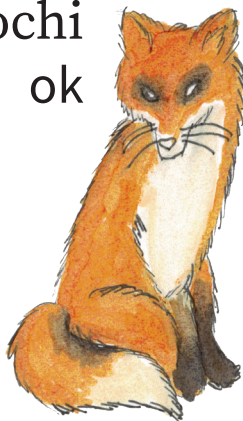
kuapitsotl  
dhimalóm olom



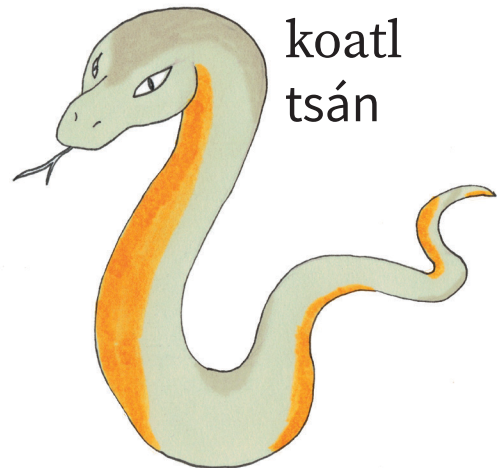
kuatochij  
koy



kayochi  
ok



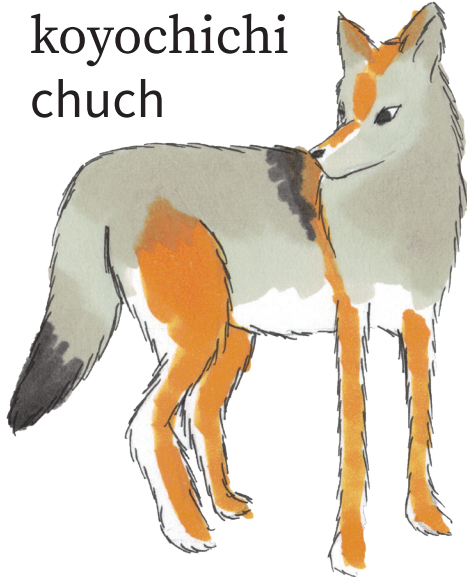
koatl  
tsán



# Kuatitlantlapiyalmej Dhimalóm ko'nél

---

koyochichi  
chuch



tlakuachin  
út'



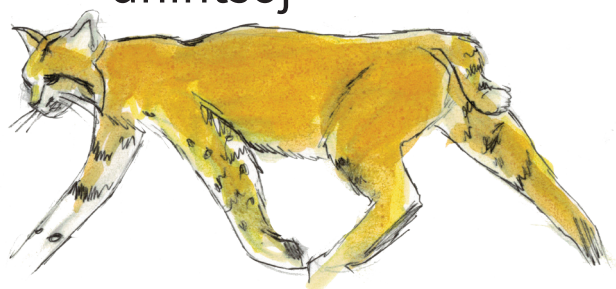
mapachin  
edhem



tekomajtli  
ot'el



kuatitlanmistli  
dhintsój



# Kuatitlantlapiyalmej Dhimalóm ko'nél

---

kuate  
bexe'



tsotso  
dhut'



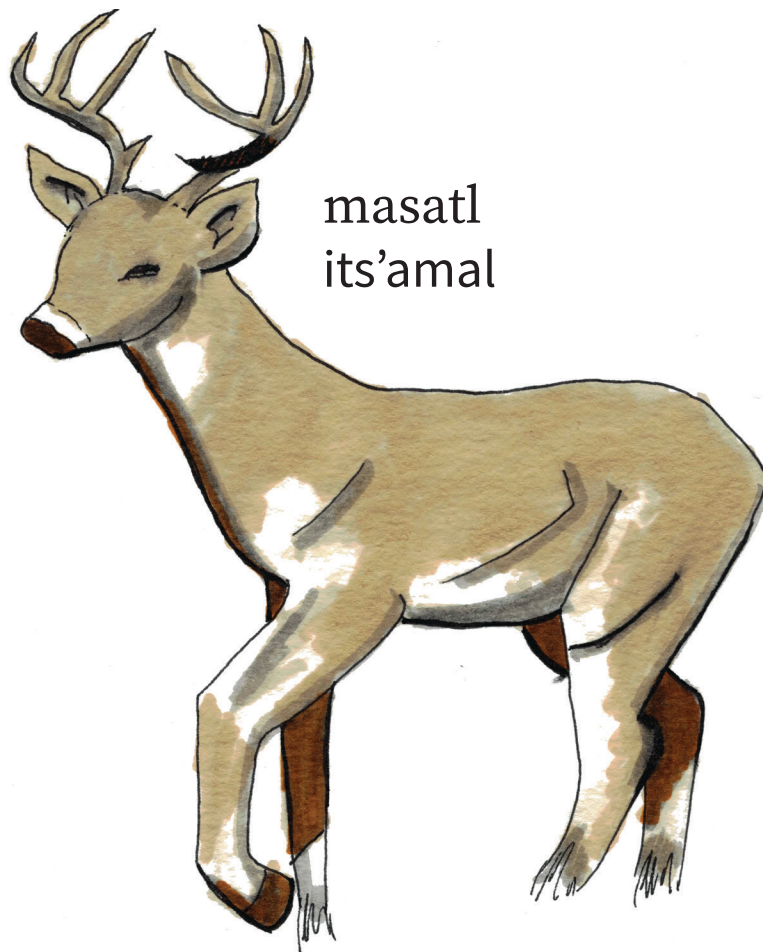
kimichi  
t'el





# Kuatitlantlapiyalmej Dhimalóm ko'nél

---



masatl  
its'amal



xompi  
k'idh ut'

# Piltlapiyaltsitsin T'ijax ko'nél

---

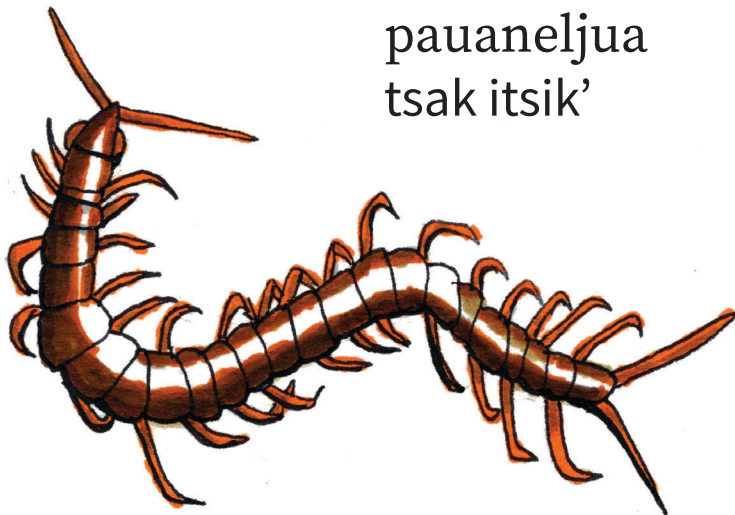
moyotl  
yoy



chapolin  
ts'ili'

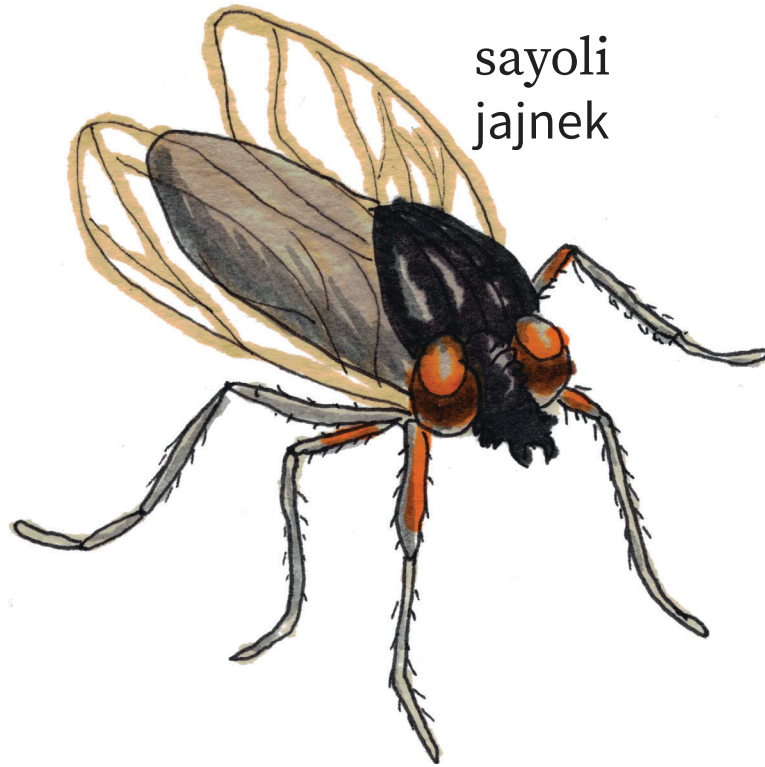


pauaneljua  
tsak itsik'

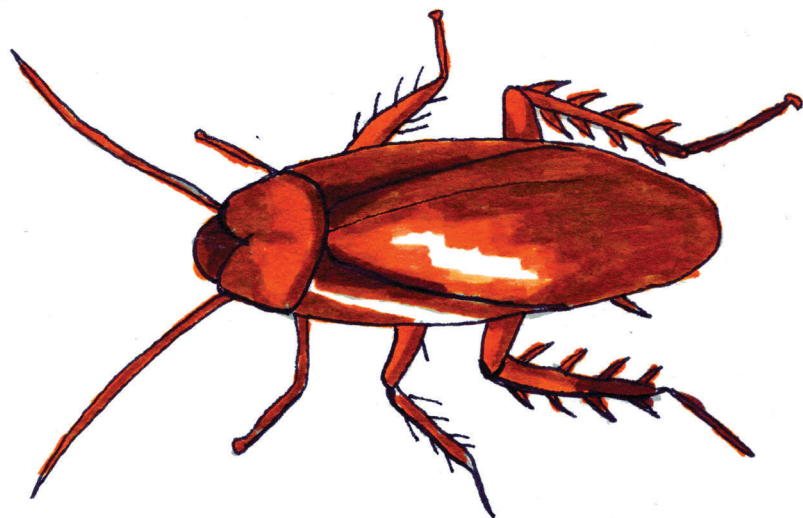


# Piltlapiyaltsitsin T'ijax ko'nél

---



sayoli  
jajnek



ueyi xojpili  
kolol

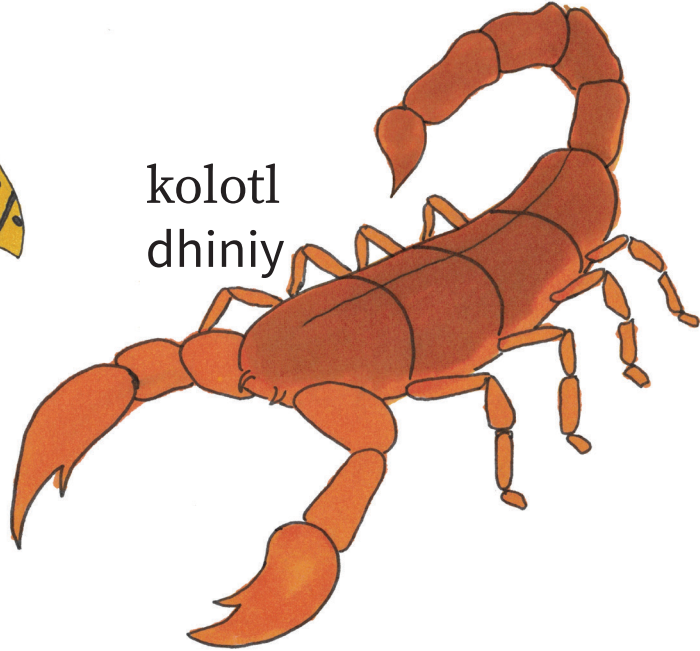
# Piltlapiyaltsitsin T'ijax ko'nél

---

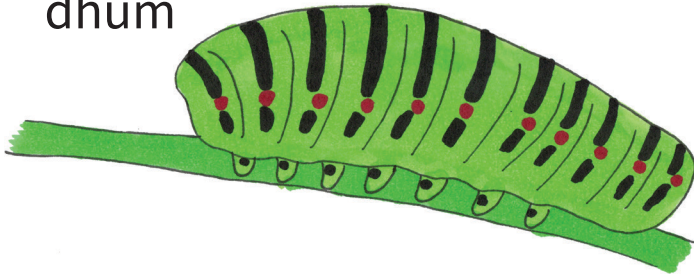
etsatl  
lat'em



kolotl  
dhiniy



okuilin  
dhum



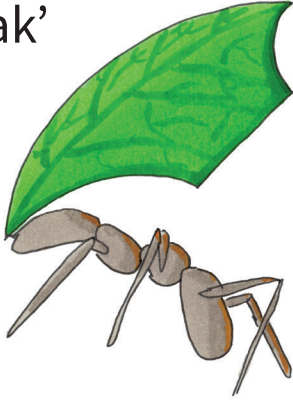
papalotl  
lem



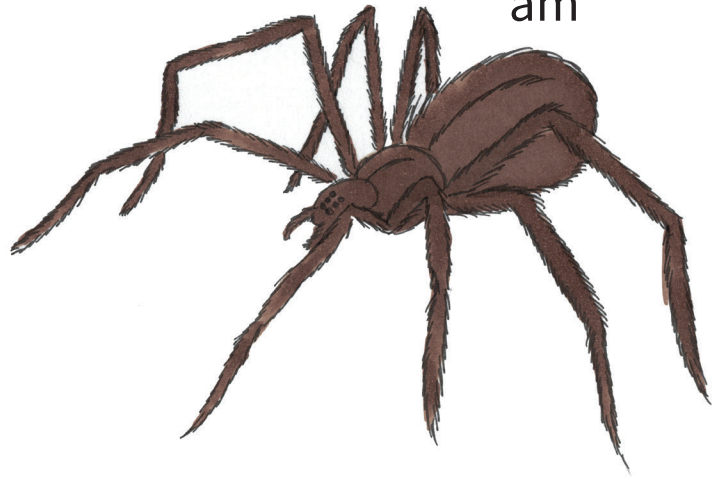
# Piltlapiyaltsitsin T'ijax ko'nél

---

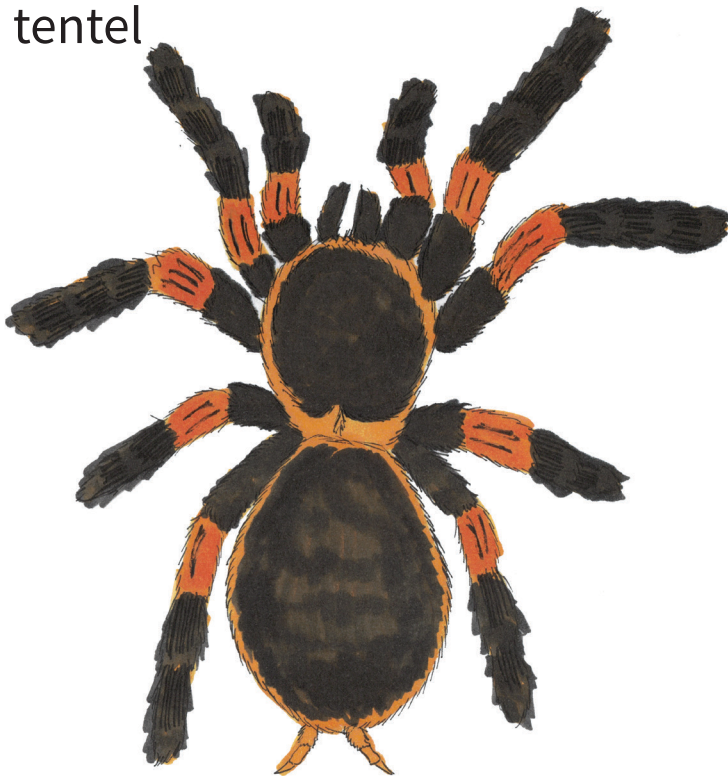
tsikatl  
lak'



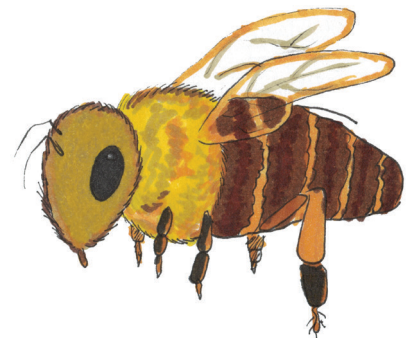
tokatl  
am



kaltekuakuajtli  
tentel

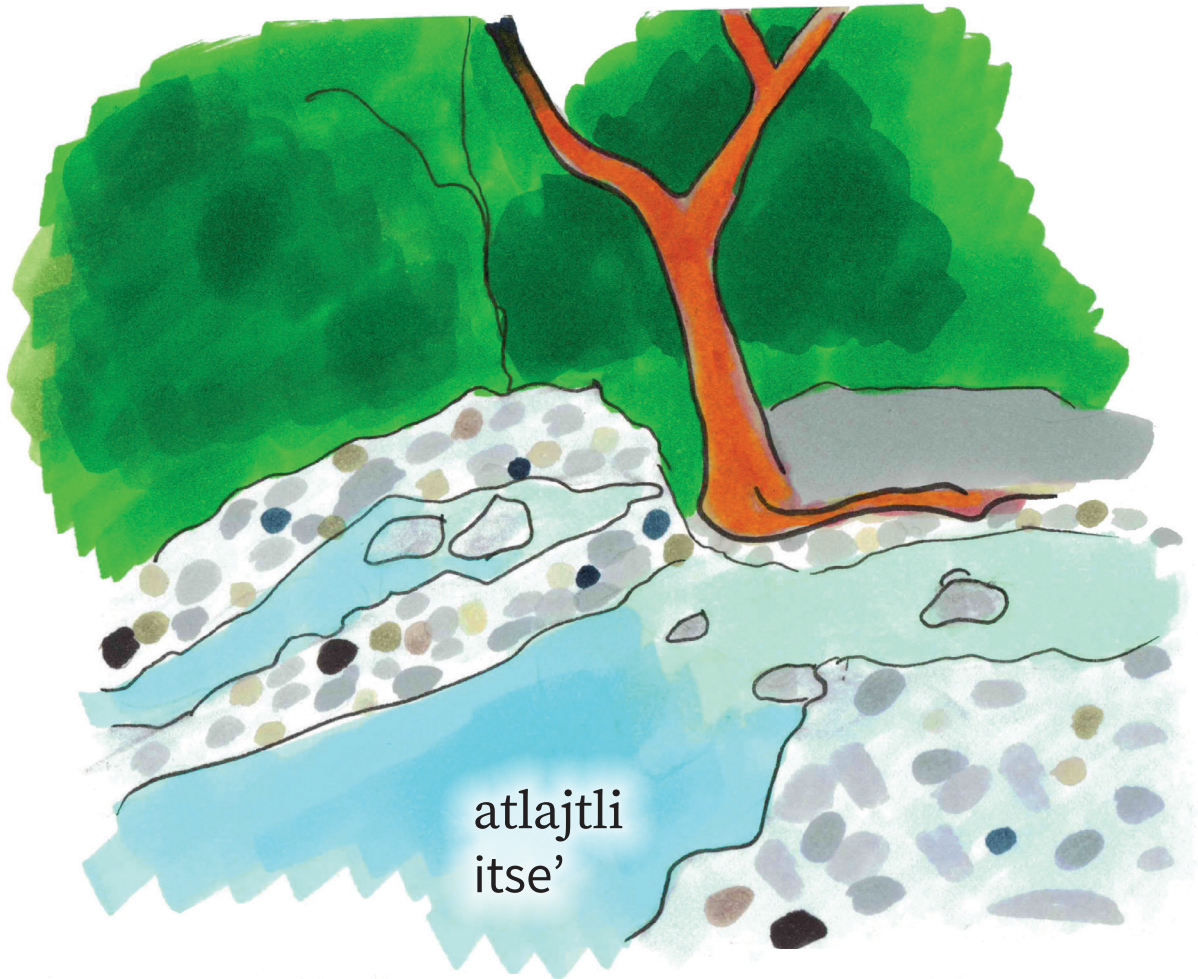


kuanektli  
chabcham, nini'

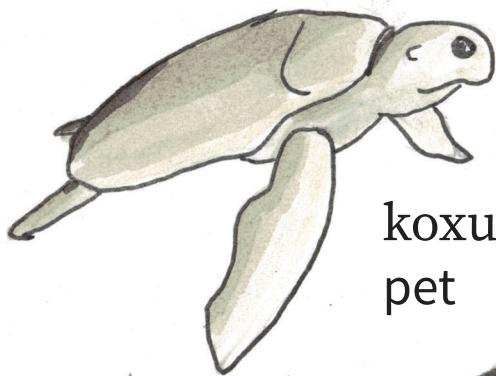


# Atlajtli Itse'

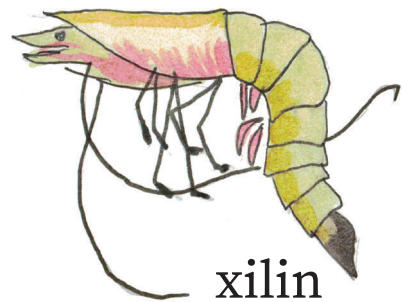
---



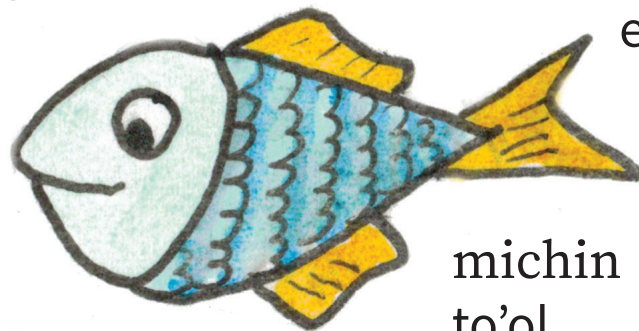
atlajtli  
itse'



koxual  
pet



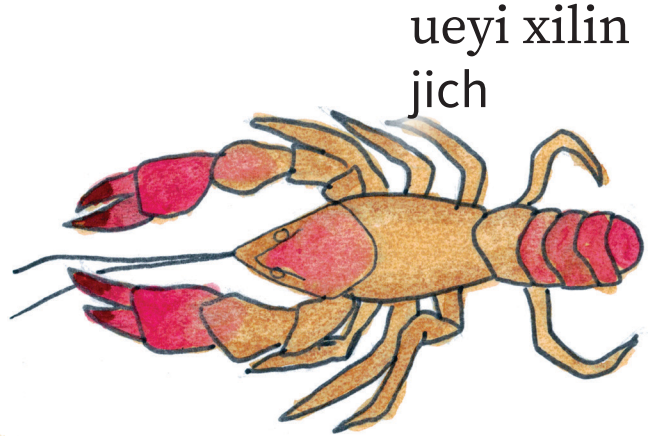
xilin  
et'



michin  
to'ol

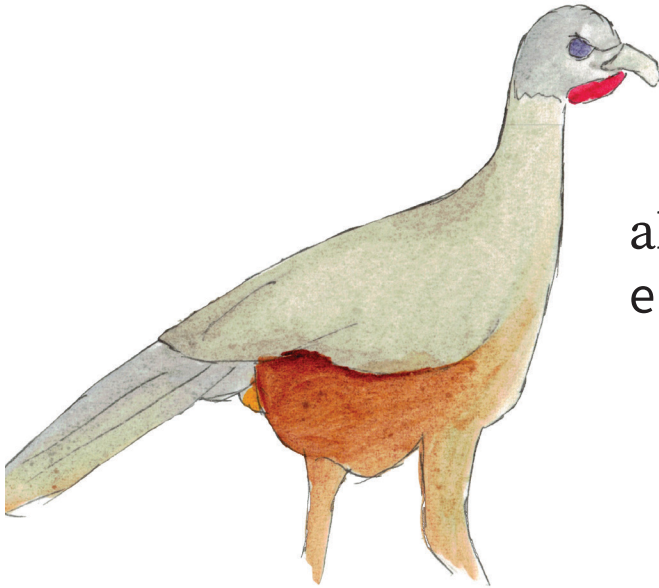
# Atlajtli Itse'

---



# Totomej Ts'itsin

---



akuatajtli  
ekwet

chiltanta  
manch'ech'



atototl  
otochín



petlakana  
t'ot'



# Totomej Ts'itsin

---



kocho  
kwele'



kakalotl  
tsok



kocho  
k'ili'

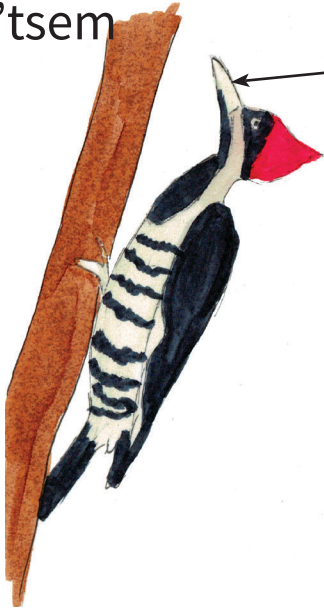


kokotsintsi  
bok'

# Totomej Ts'itsin

---

kuacheche  
tse'tsem



tenchapich  
wi'

kuamomajtli  
wajuts, tululu'



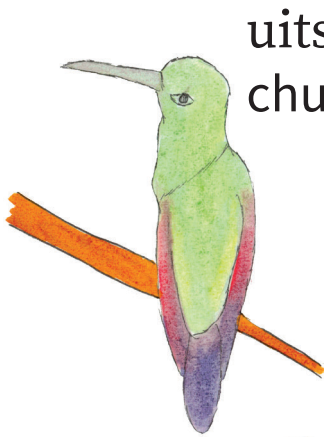
kuajtli  
t'iw



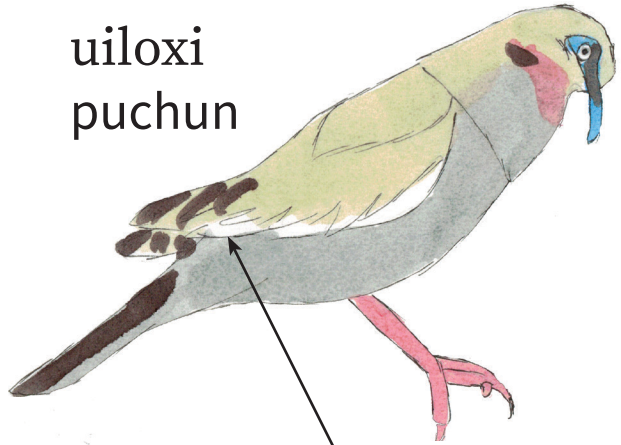
eltlapaliyo  
dhet'eb

# Totomej Ts'itsin

---



uitsitsilin  
chunun



uiloxi  
puchun

soli  
kubi'



kili  
kutsu'

ijuitl  
jujlek

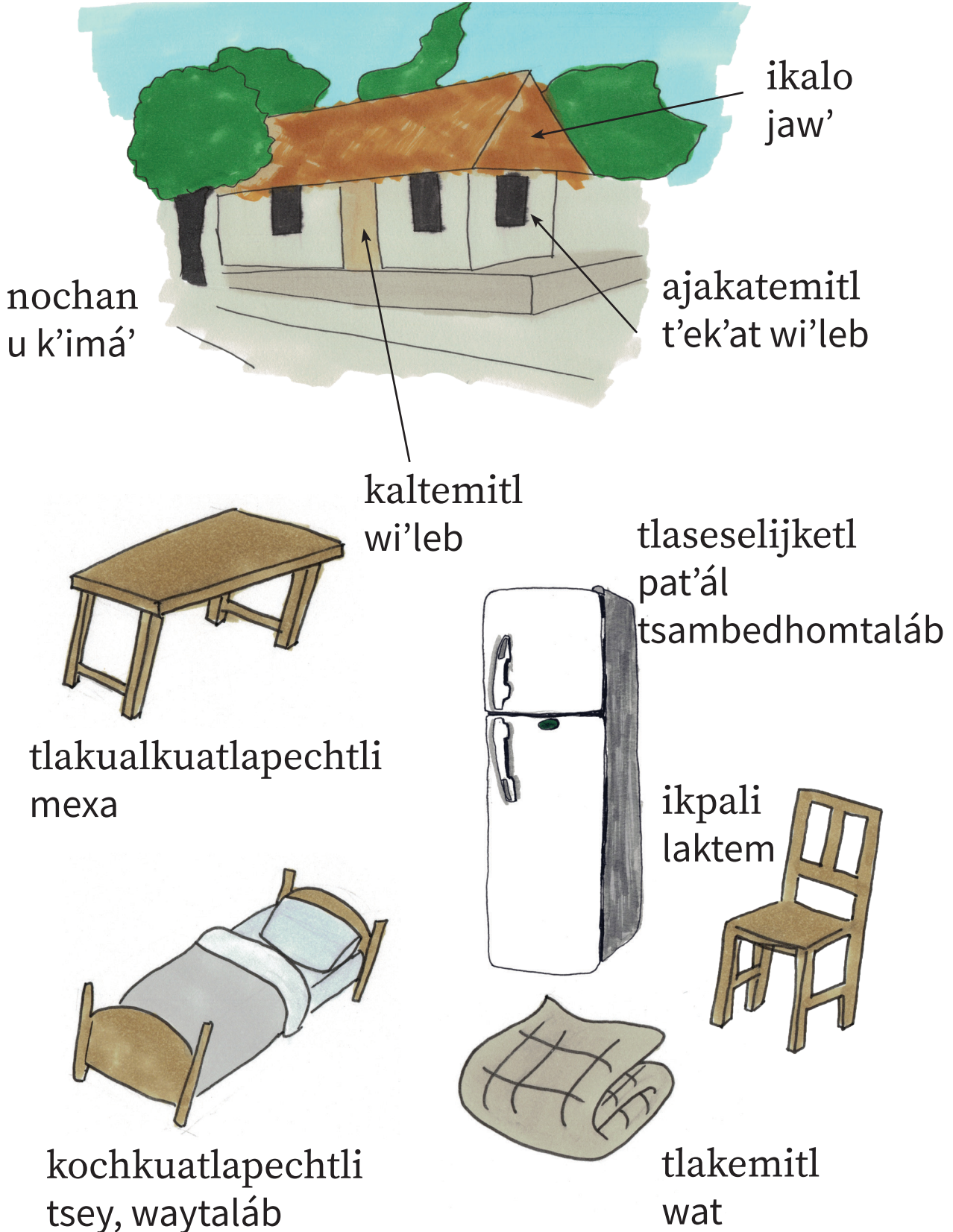


papan tototl  
papán



akatsana  
pich

# Kalijtik Altáj



# Kalijtik Altáj

tepostlapojketl  
pat'ál japixtaláb



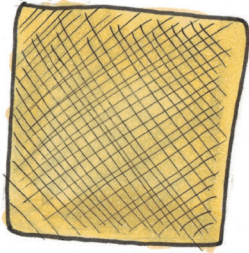
tsontetomitl  
lachik'



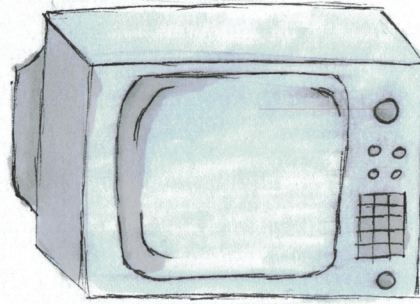
ixkopinkayotl  
k'otbixtaláb



petlatl  
tat



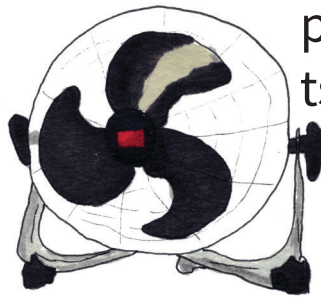
tepostlamausoli  
pat'ál tejwamedhomtaláb



yoyomitl  
toltom

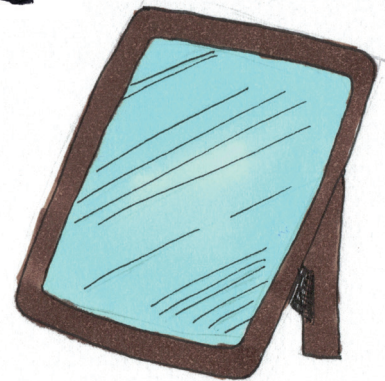


ajakatestlaseselijketl  
pat'ál  
tsamamedhomtaláb



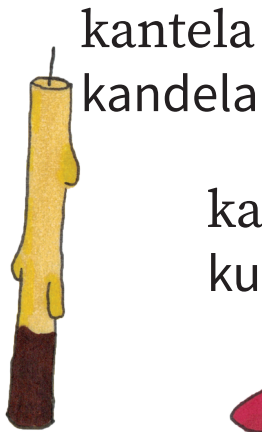
teskatl  
lam

pesekuakajon  
pilaxtal a toltomil

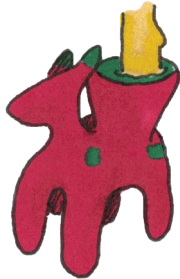


# Xantolo / Mikailuitl Santoro

---

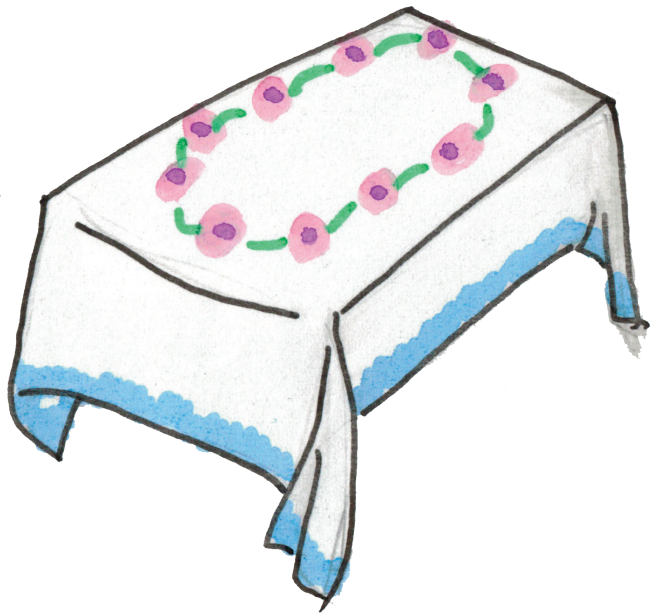


kantelakuachichi  
kub an kandela



tamali  
kwatsám

tamalyoyomitl  
k'wa'chim



kopalkuachichi/popochkomitl  
sansario

# Xantolo / Mikailuitl Santoro

mijkatsopelimemeli  
tsi'madh bok'ól



uinoj  
ts'ots'on



uitoli  
pulich

ayitochkuitlapili  
dhokob



nemajtli  
ts'akchixtaláb

mijketl  
tsemelom



ojxochitl  
witsidh bel



tsopelikej  
tsi'iktaláb



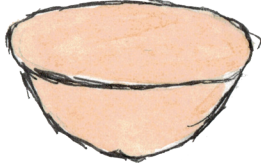
sempoualxochitl  
k'uchidh wits



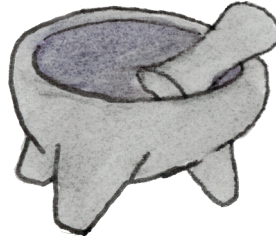
# Tlapaleuijketl ka mochiua tlakuali Eyextaláb

---

auajkali  
madhab



tekuicha  
kw'itsab



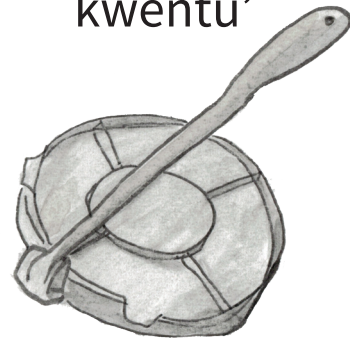
chachapali  
pach



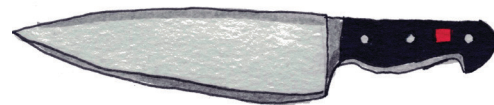
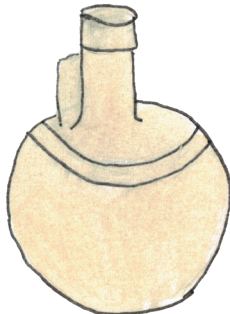
chilkaxitl  
ts'ajib

tlaxkalaakuiketl  
t'oknab, kwentu'

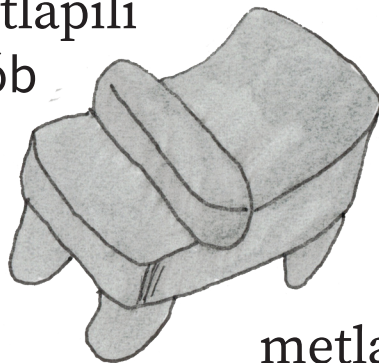
tlaxkalkanajketl  
kwentu'



xomo  
pach



metlapili  
okób



tepostlatsontejketl  
kutsíl

bateya  
bateya

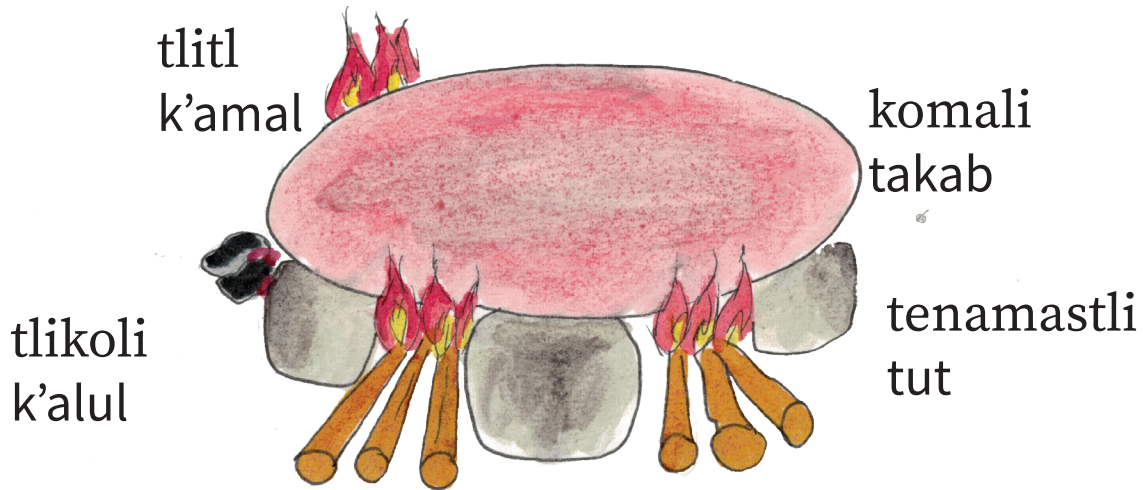


metlatl  
tsa'



# Tlapaleuijketl ka mochiua tlakuali Eyextaláb

---



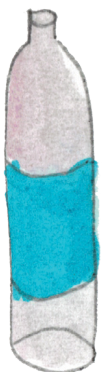
tlikuauitl  
jok'padh dhi'



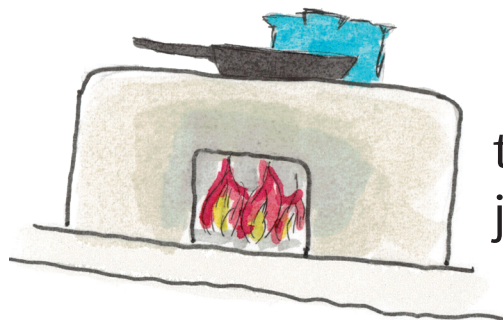
totomochtli  
jobjob



nexkomitl  
k'watsib



lemetej  
balixtaláb

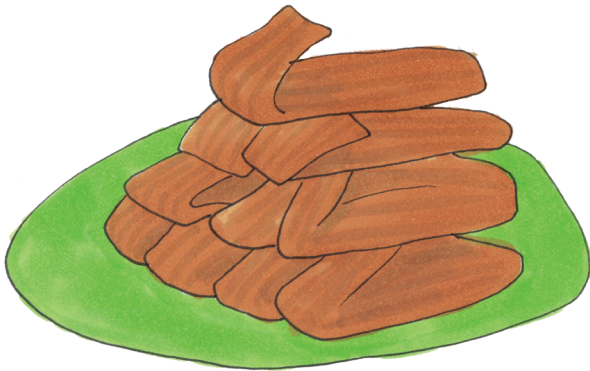


tlixiktli  
joldhi'

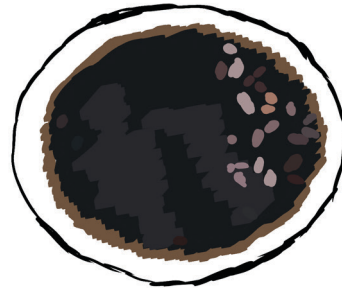
# Tlakuali K'apné

---

etamali  
kwatsam tsanak'w



ayoapasotl  
tsanak'w k'al i tijtson



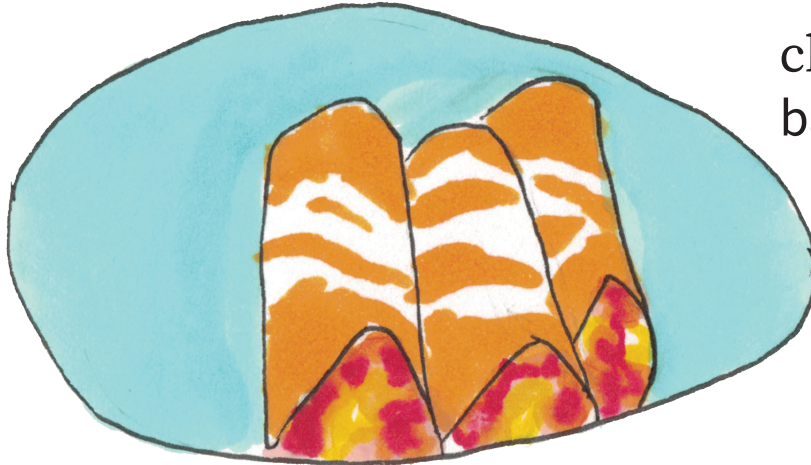
elotlapauaxtli  
ajan



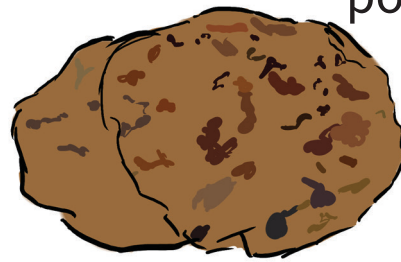
chiltlamoltli  
tse'edh its

# Tlakuali K'apné

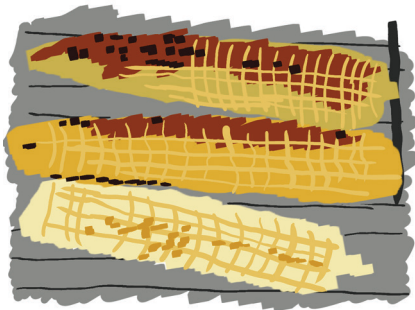
---



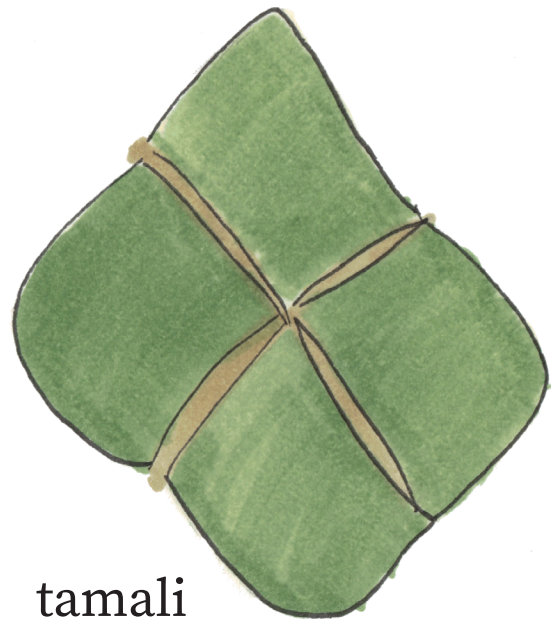
chiltlaxkali  
bajudh bakan



etekoko  
pompol



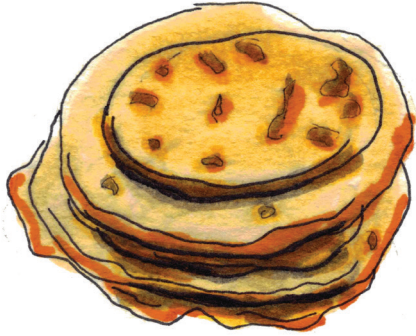
elotlaxkili  
wiyadh ajan



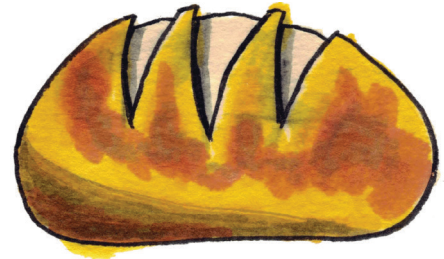
tamali  
kwatsám

# Tlakuali K'apnéł

---



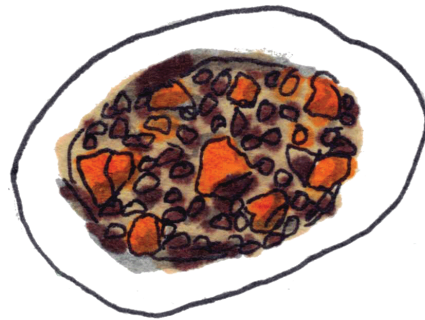
tlaxkali  
bakan



tsopelimemeli  
tsi'madh bok'ól



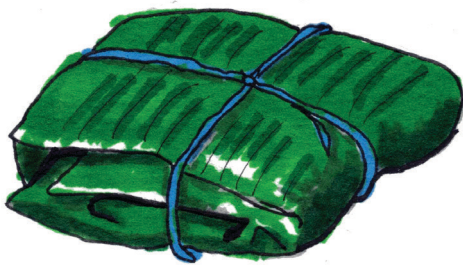
moli  
t'ak'chil



etlatsoyontli  
yujudh tsanak'w



xamitl  
kwich



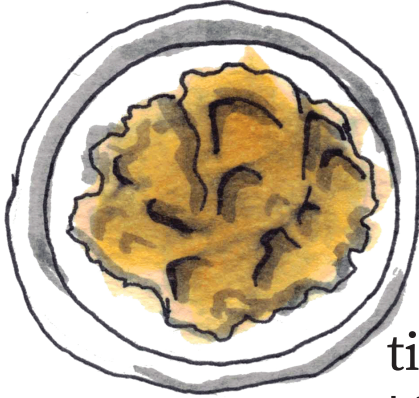
patlach  
bolím



sakauili  
zacahuil

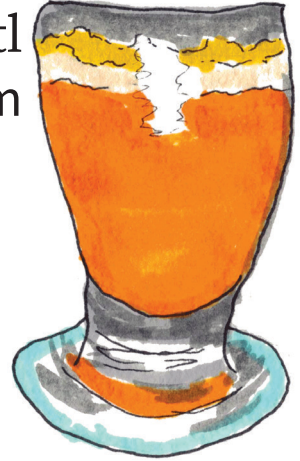
# Tlakuali K'apnéł

---



tixtli  
k'oyej

kuatlajkaayotl  
tsi'ím



kexo  
kexu

kafen  
kapéj



tesistli ipan isuatl  
dhak'chok' tek'dhach al i dhulup



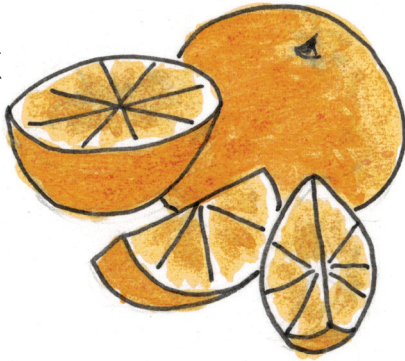
atoli  
wat'ap



# Kalixpamitl Eléb

---

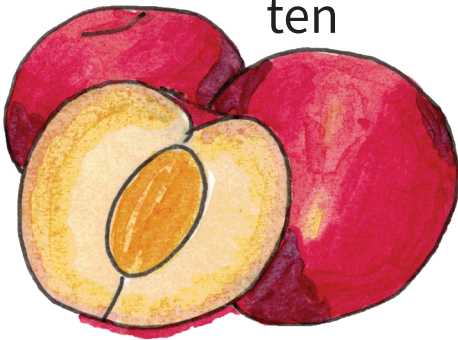
lalax  
lanáx



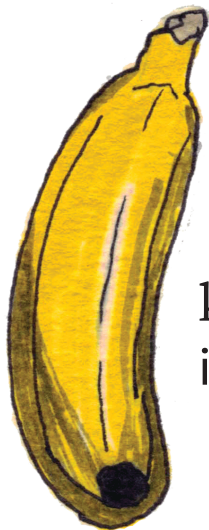
tlalxokotl  
bek



xokotl  
ten

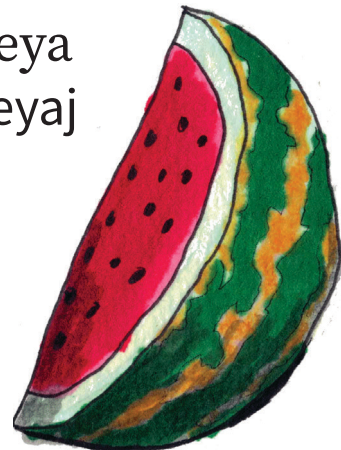


kuaxokotl  
k'inim



kuaxilotl  
it'adh

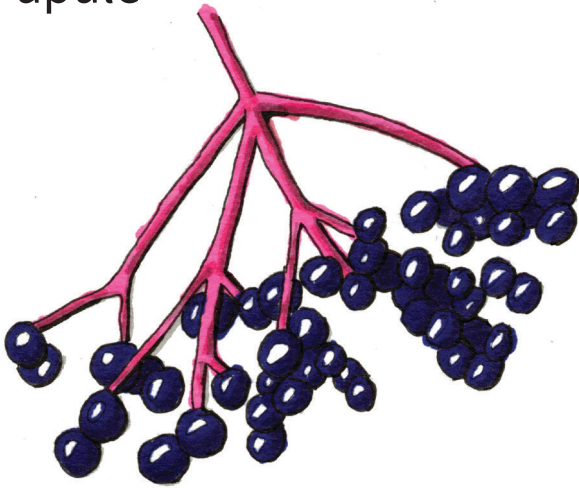
ualeyá  
baleyaj



# Kalixpamitl Eléb

---

apole  
apulé'



tonas  
pots'ots'

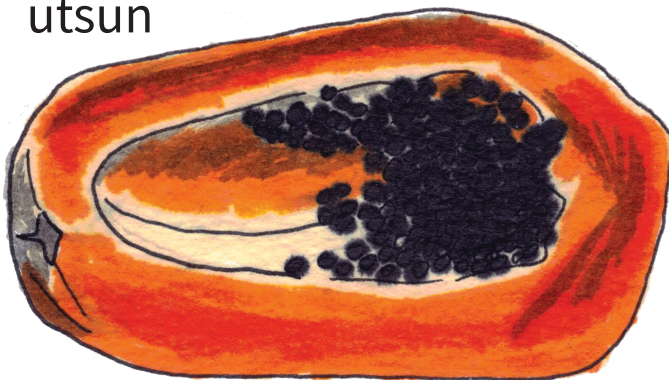


pajpatla  
ts'umts'um

sakatl  
tom



ochonijtli  
utsun



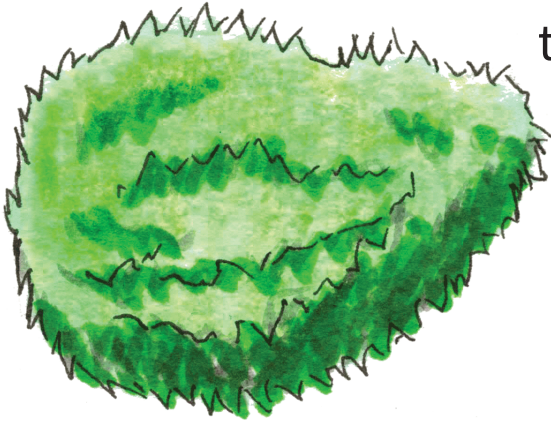
xochitl  
wits



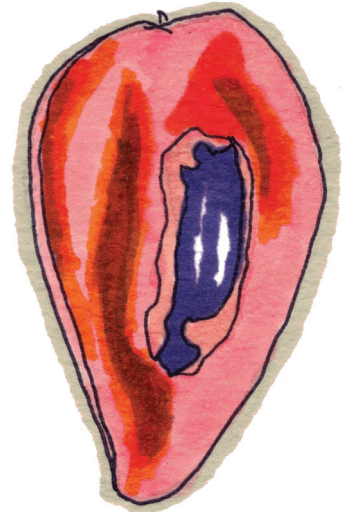
# Kalixpamitl Eléb

---

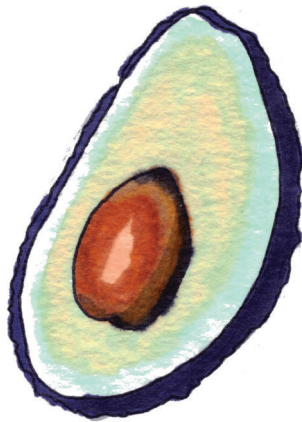
tlakayotl  
tsiw'



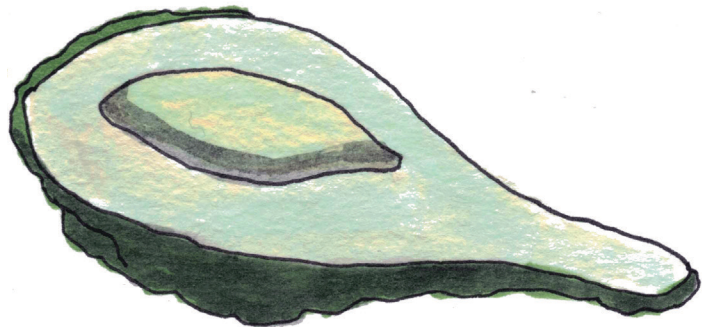
tsapotl  
bolom it'adh



auakatl  
új



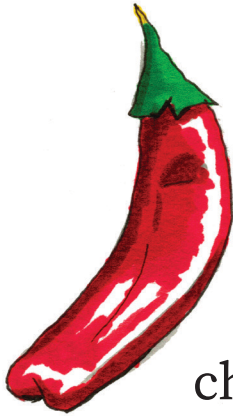
paua  
új





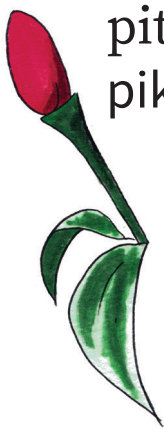
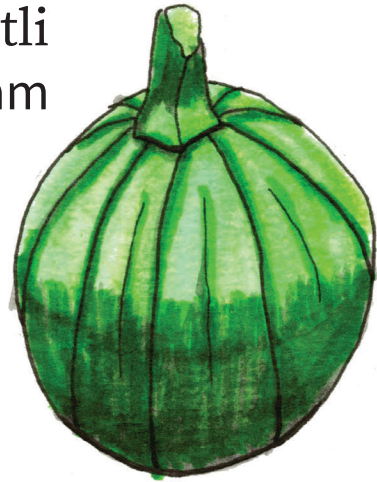
# Kalixpamitl Eléb

---



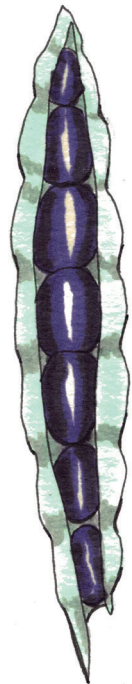
chili  
its

ayojtli  
k'alam

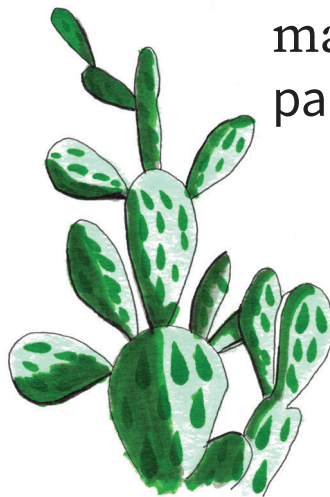


pitsajchili  
pikín its, kipín itsits

etl  
tsanak'w

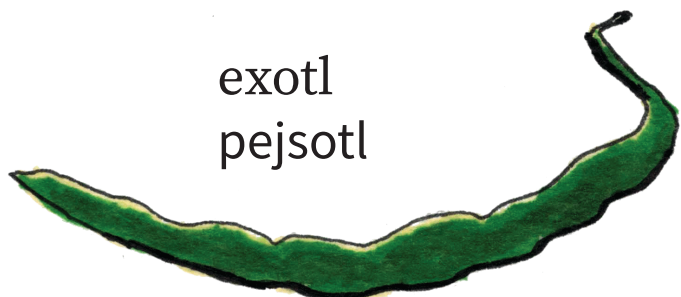
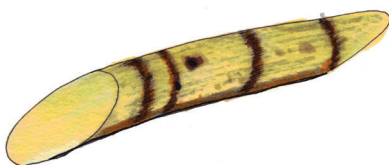


majpali  
pak'ak'



ouatl  
pakab

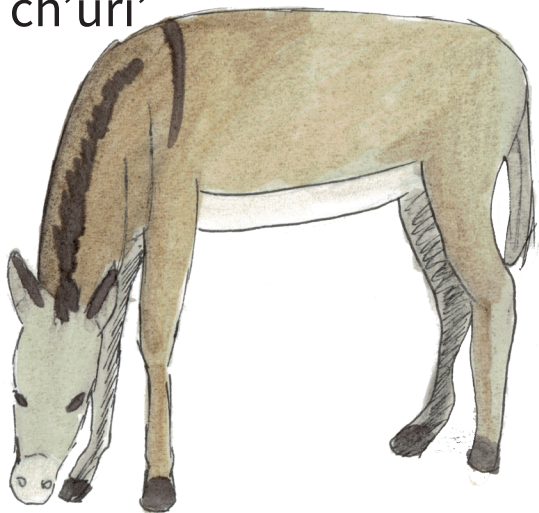
exotl  
pejsotl



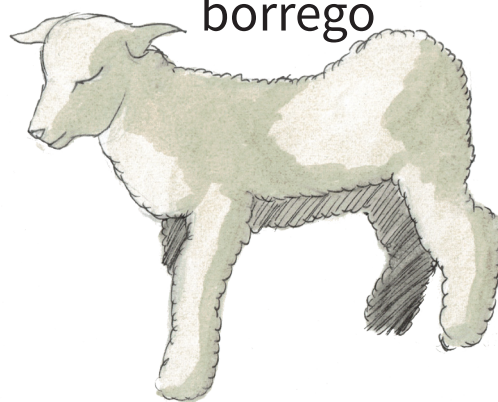
# Tlapiyalmej Maxu ko'nél

---

penkokauayoj  
ch'úri'



borregoj  
borrego



kauayoj  
bichim



tlaixpanokakauayoj  
uxk'we' bichim



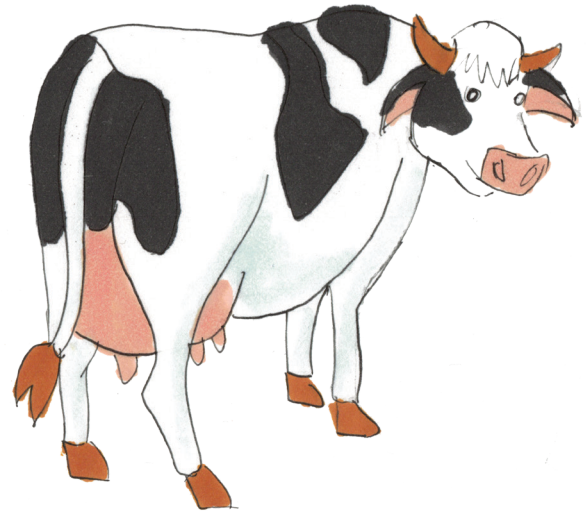
# Tlapiyalmej Maxu ko'nél

---

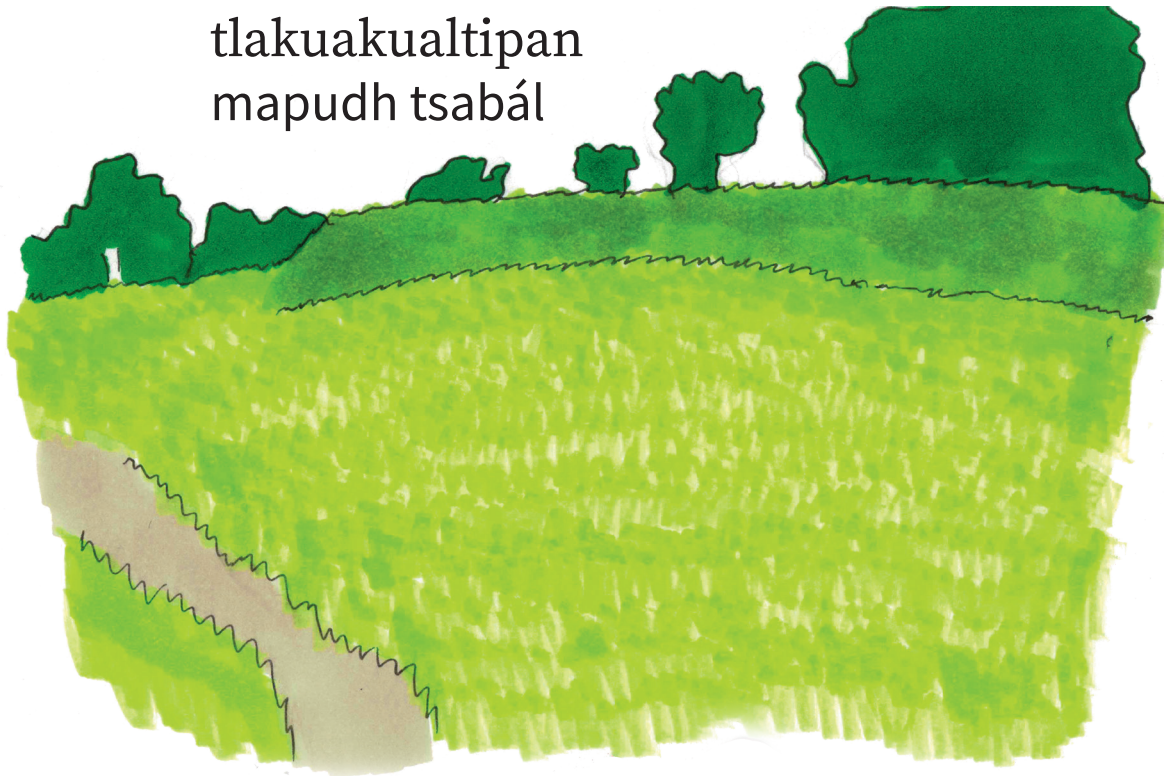
okichkauayo  
inik bichim



uakax  
mapudh ko'nel



tlakuakualtipan  
mapudh tsabál

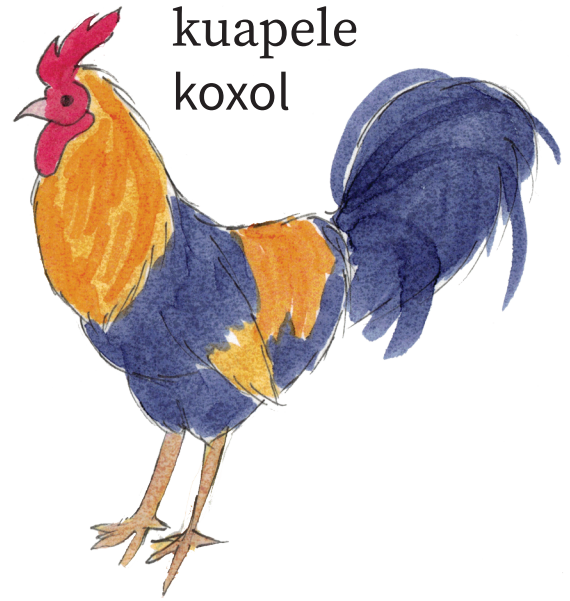


# Tlapiyalmej kalijtik Maxu ko'nel xi ti ataj

---



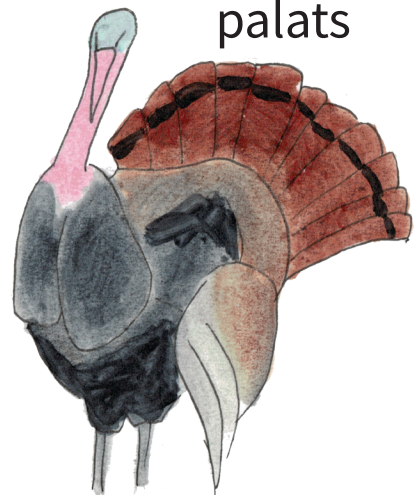
chichi  
pik'o'



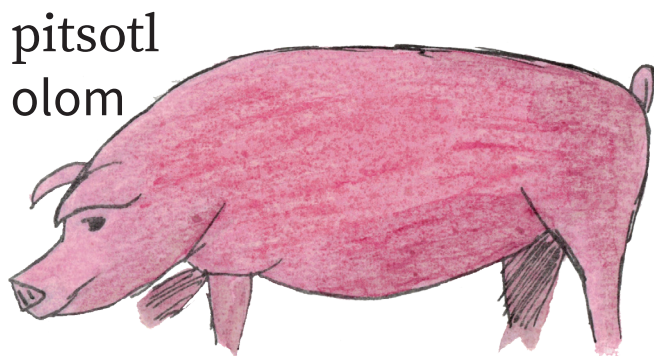
kuapele  
koxol



miston  
mitsu'



palach  
palats



pitsotl  
olom

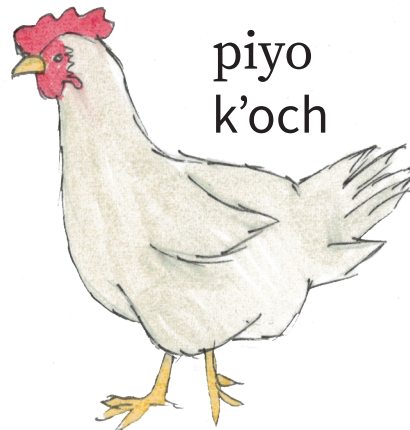
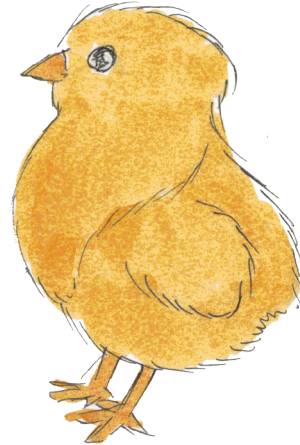
# Tlapiyalmej kalijtik Maxu ko'nel xi ti ataj

---

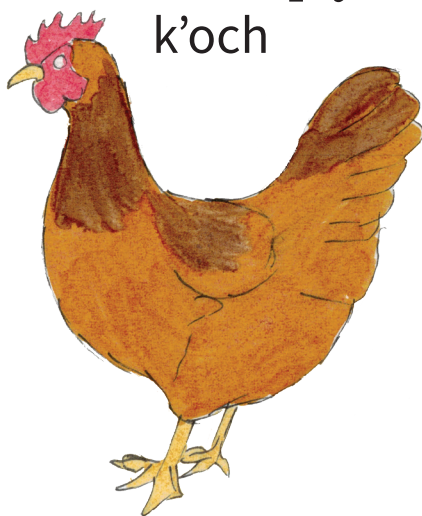


patox  
pak'wak'w

pilpiyotsin  
tsakam pita', tsilin

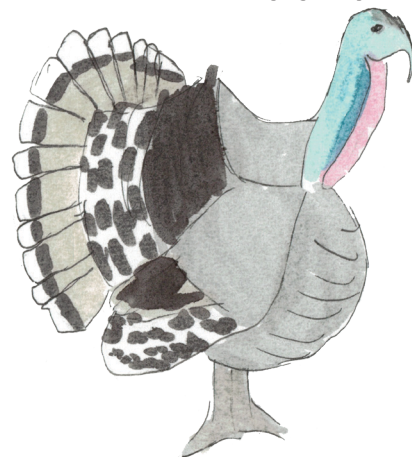


piyo  
k'och



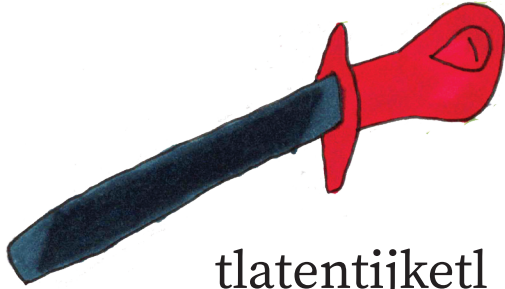
tenanpiyo  
k'och

totolin  
k'adhaw



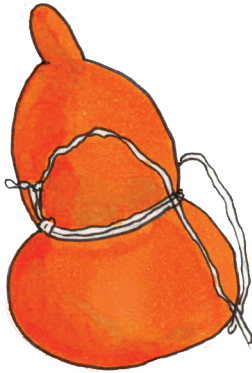
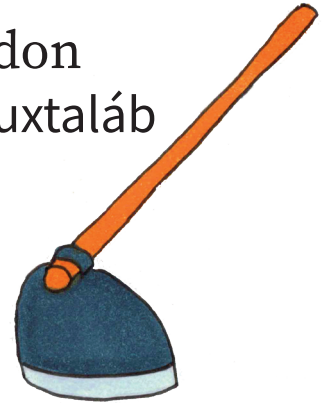
# Mili Aliláb

---



tlatentijketl  
pajixtaláb

asadon  
lak'uxtaláb



tsikatl  
xomom



patlachtepostli  
matset



kuachikiuitl  
t'aknab



kuatoktli  
kujub

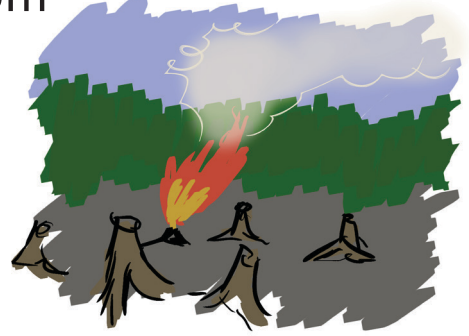
# Mili Aliláb

---

tlameualistli  
kwajlom



tlachinolistli  
chiklom



sintlatokalistli  
omáts



tlameualistli  
chixlom



pixkalistli  
k'ojol

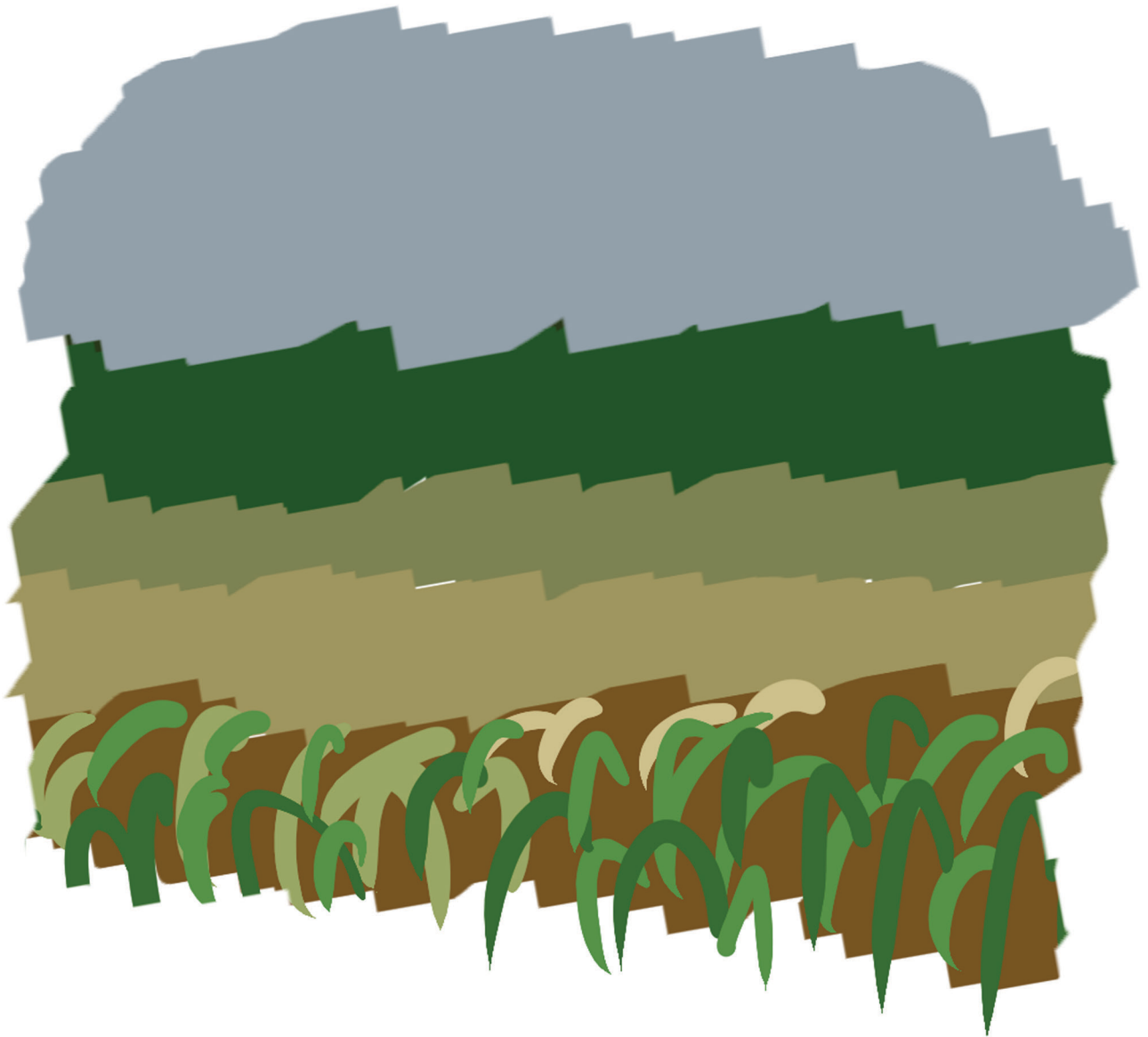


sinsakalistli  
iyom way

# Ipoual sintlatokistli K'ij tit om em

---

xopanmili  
áb k'ij





# Ipoual sintlatokistli K'ij tit om em

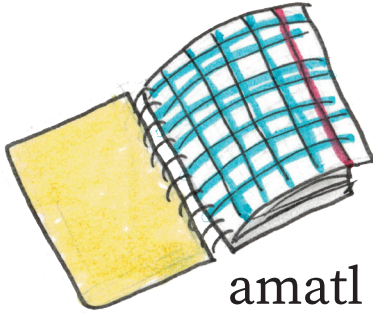
---



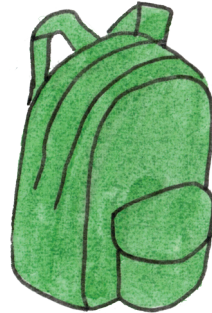
tonalmili  
k'ak' k'ij

# Kaltlamachtlistli Atáj exobintláb

---

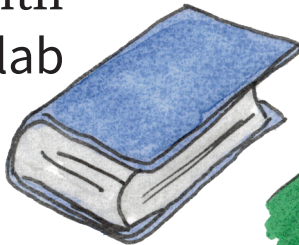


amatl  
úw

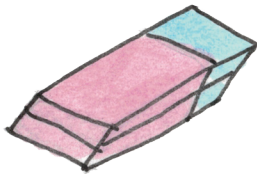


amochtlaakuiketl  
balixtaláb

amochtli  
dhuchlab

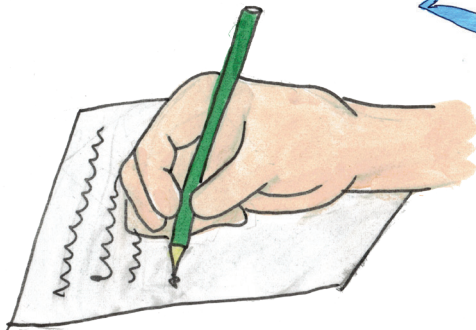


tlen mochiuas  
t'ojláb abal ti atáj



tlaixpopoua  
pakuxtaláb

amatl kampa se tlakuilos  
dhuchumtaláb



tlakuilolistli  
dhuchlab

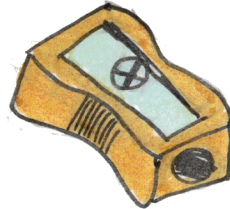


katli motekiuiyaj  
ipan kaltlamachtlistli  
eyextaláb ti atáj exobintaláb

# Kaltlamachtlistli Atáj exobintláb

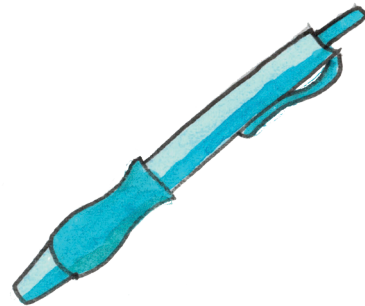
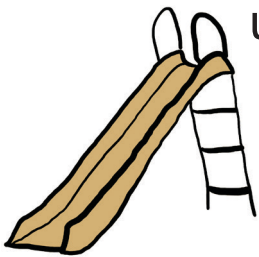
---

tlapoualistli  
ajumtaláb



tlayakatentijketl  
ts'upixtaláb

mauilitlistli  
ubat'intaláb

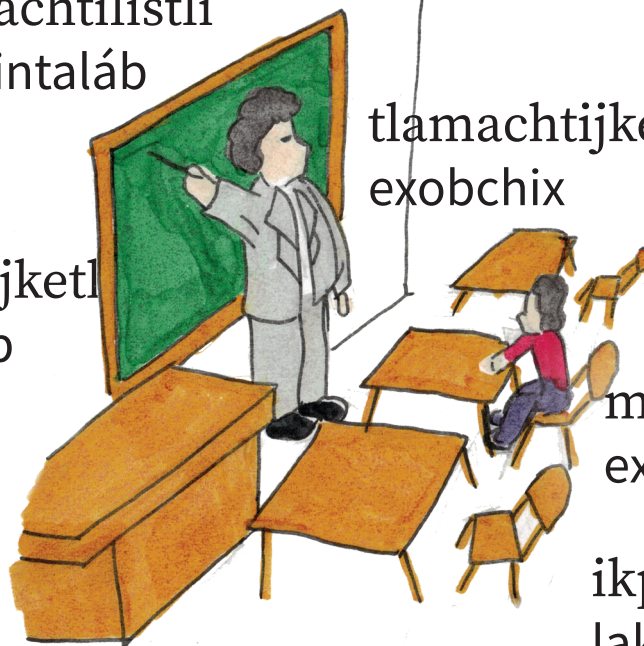


kuapipitstlakuiloyketl  
dhuchumtaláb

tlamachtlistli  
exobintaláb

tlamachtijketl  
exobchix

uapaltlakuiloyketl  
dhuchumtaláb



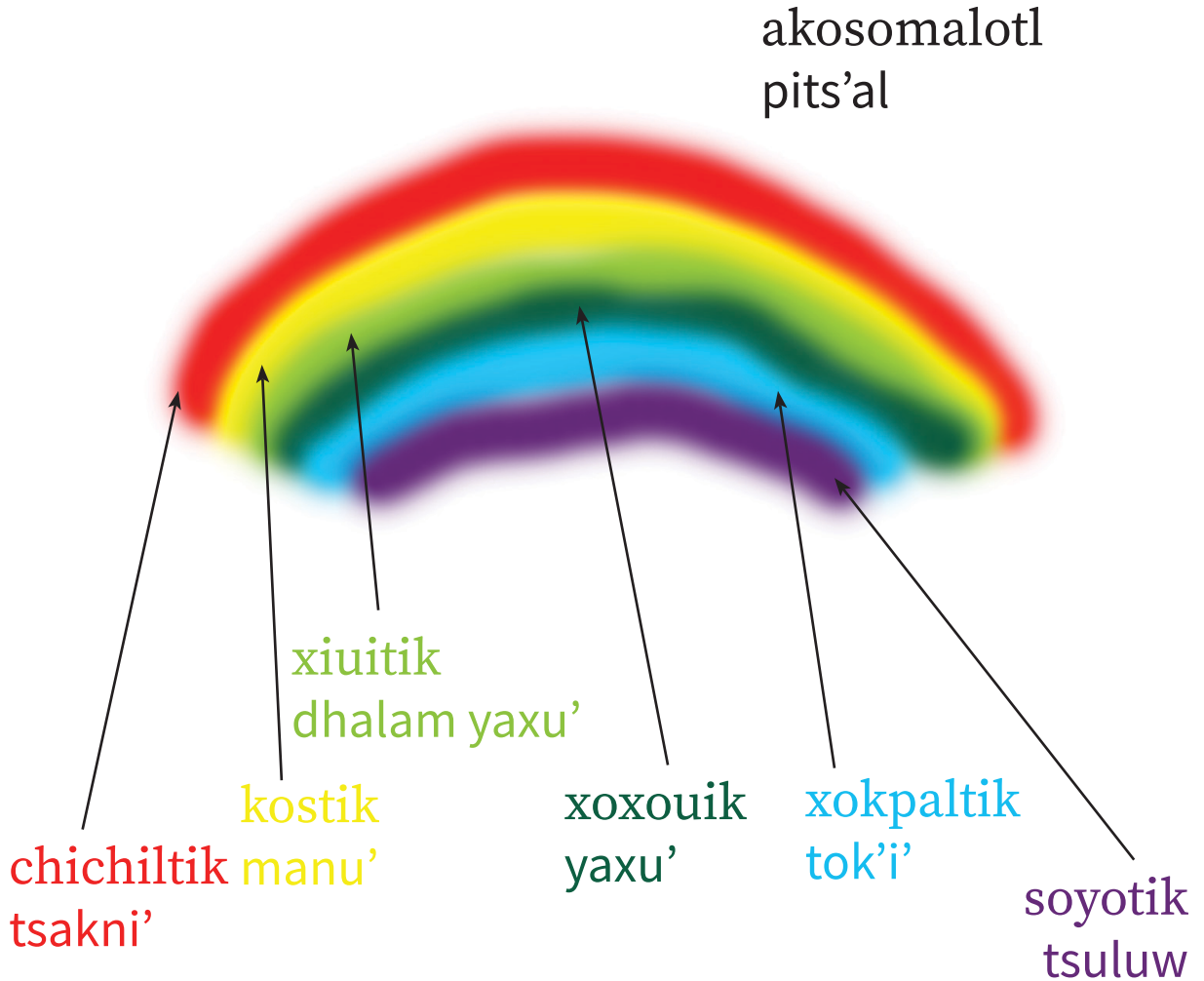
momachtijketl  
exobal

ikpali  
laktem

kampa se tlakuiloa  
mexa

# Xauani Mukuxtaláb

---



kafentik  
tsokoy

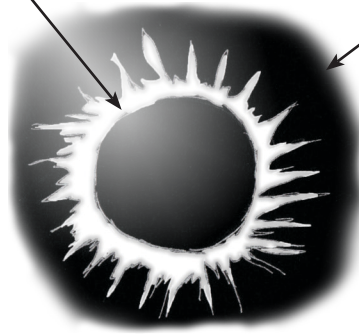


# Xauani Mukuxtaláb

---

chipauak  
dhakni'

yayauik  
t'unu'



kualo tonatij  
k'apáb a k'icháj



tenextik  
aku'

# Maseualmej Atikláb

---

nonanan  
u mím

no(achka)iknij  
u (ok'ox) atatal ♂-♂  
u (ok'ox) epchal ♀-♂

no(achkasiua)iknij  
u (ok'ox) epchal

na  
naná'

# Maseualmej Atikláb

---

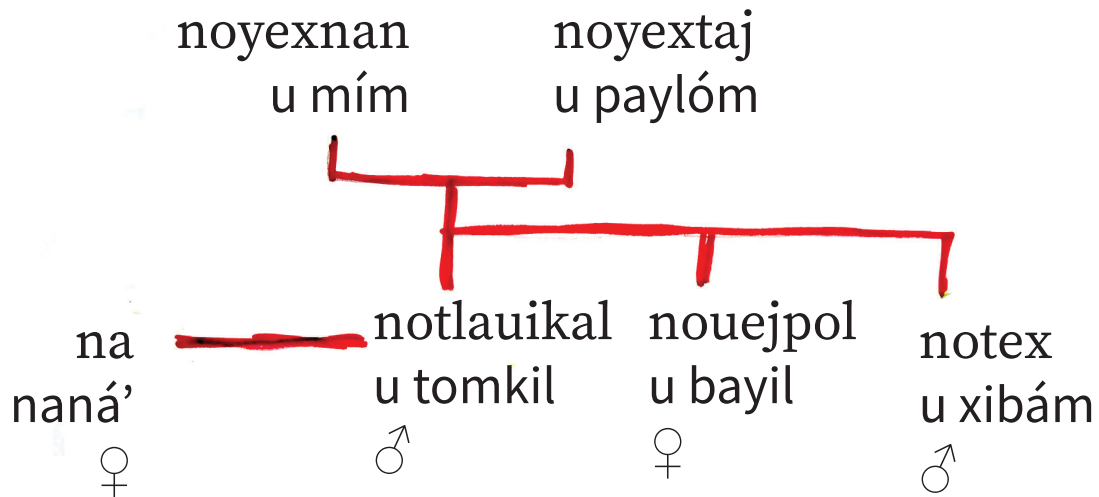
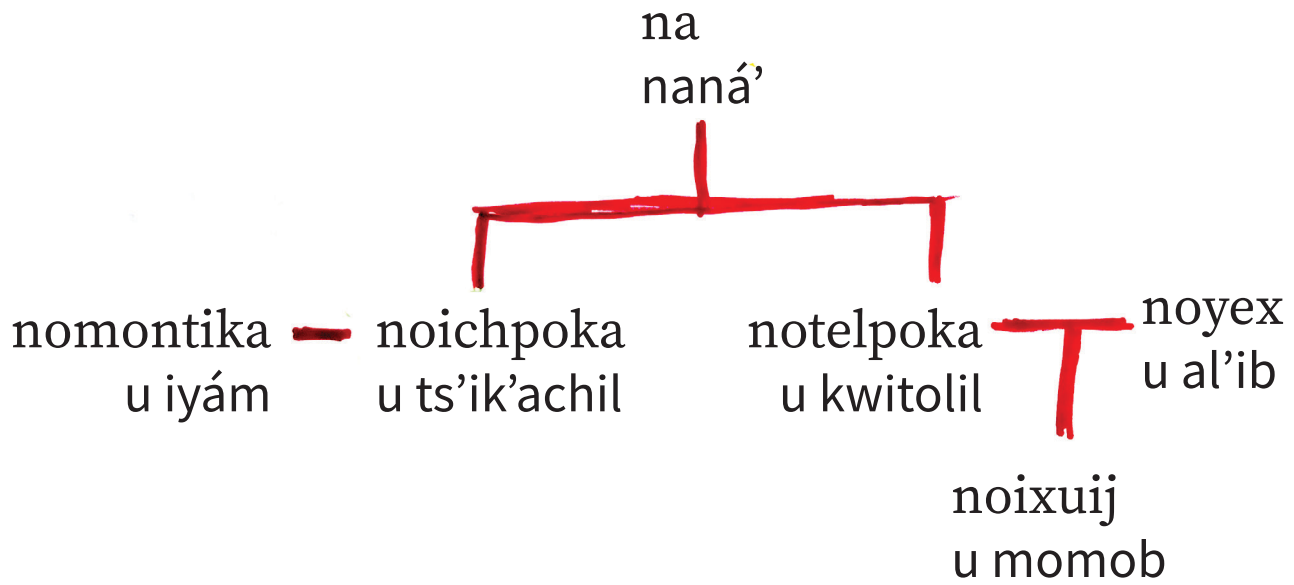
notataj  
u tataj

no(iyoa)iknij      no(iyoasiua)iknij  
u (talbél) atatal ♂-♂      u (talbél) epchal  
u (talbél) epchal ♀-♂

nomachkonej  
u itsak'

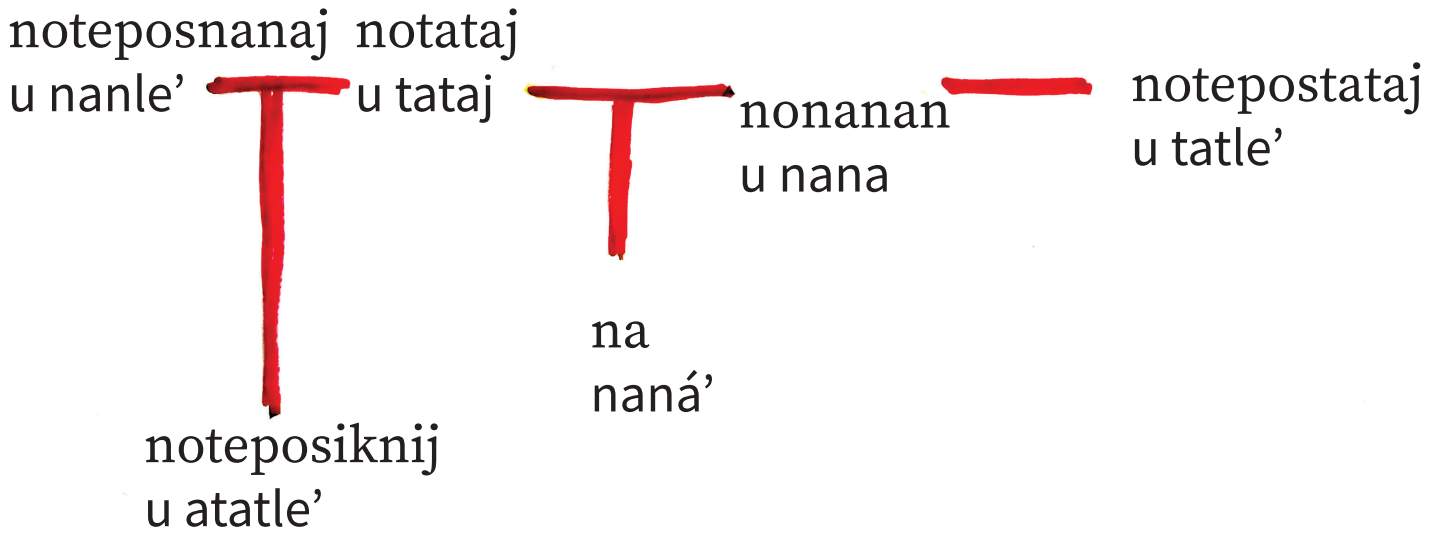
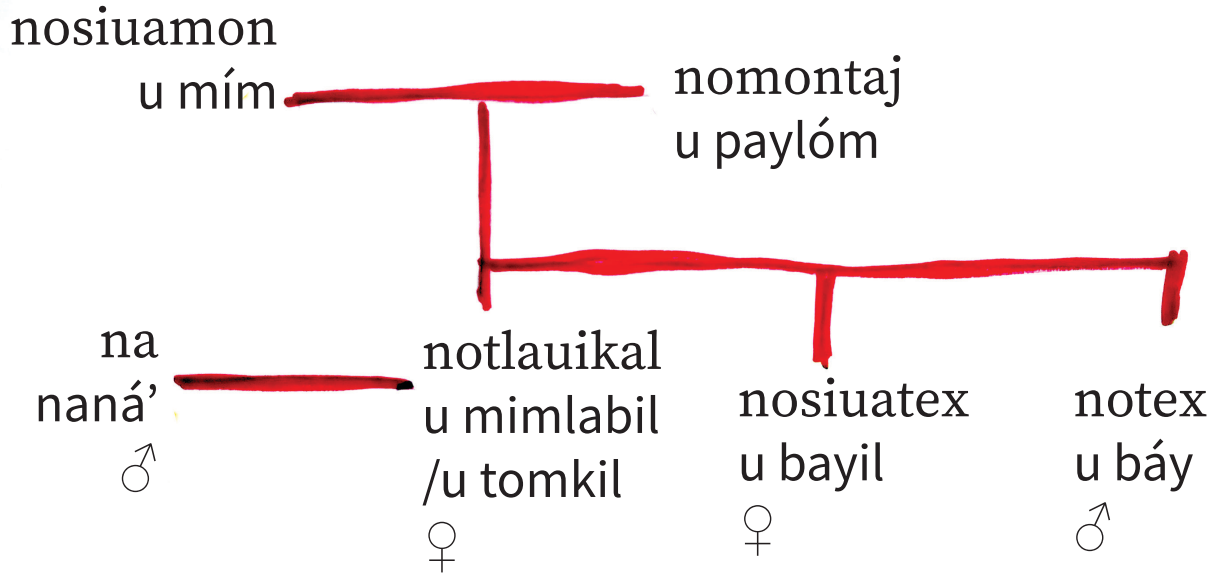
# Maseualmej Atikláb

---



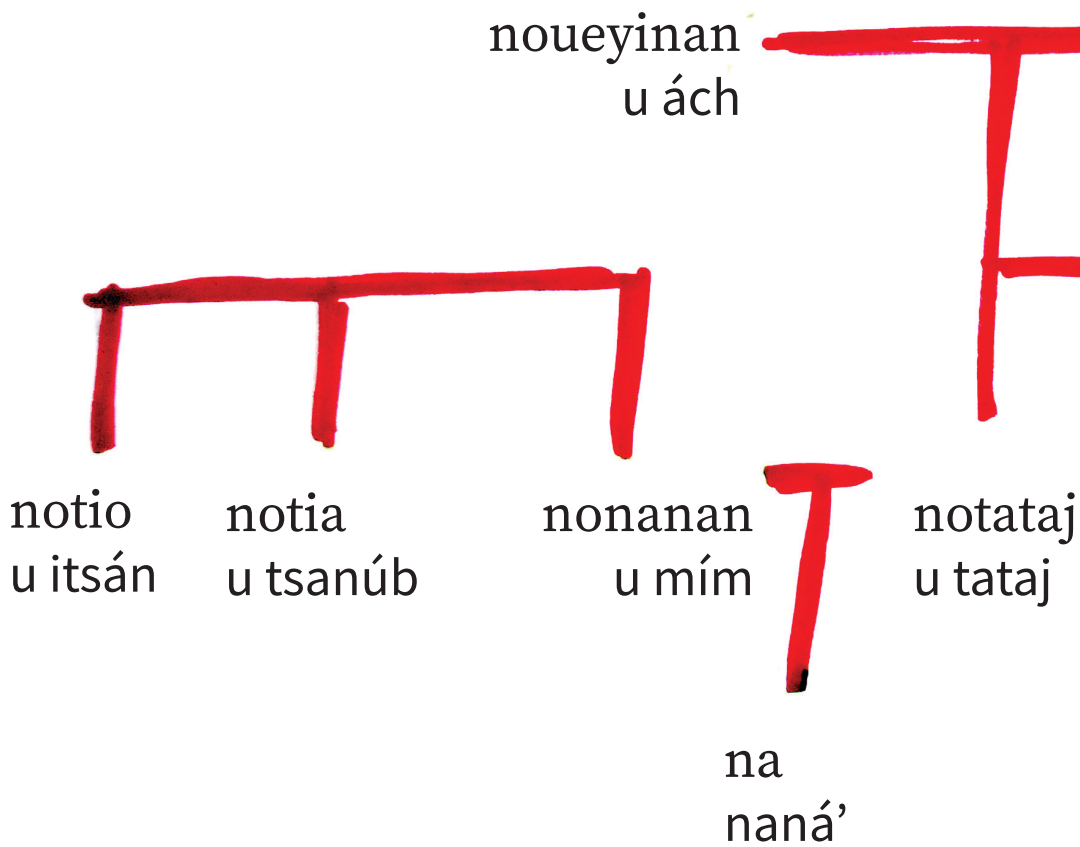


# Maseualmej Atikláb



# Maseualmej Atikláb

---



# Maseualmej Atikláb

---

noueyitaj  
u mám

notia  
u tsanúb

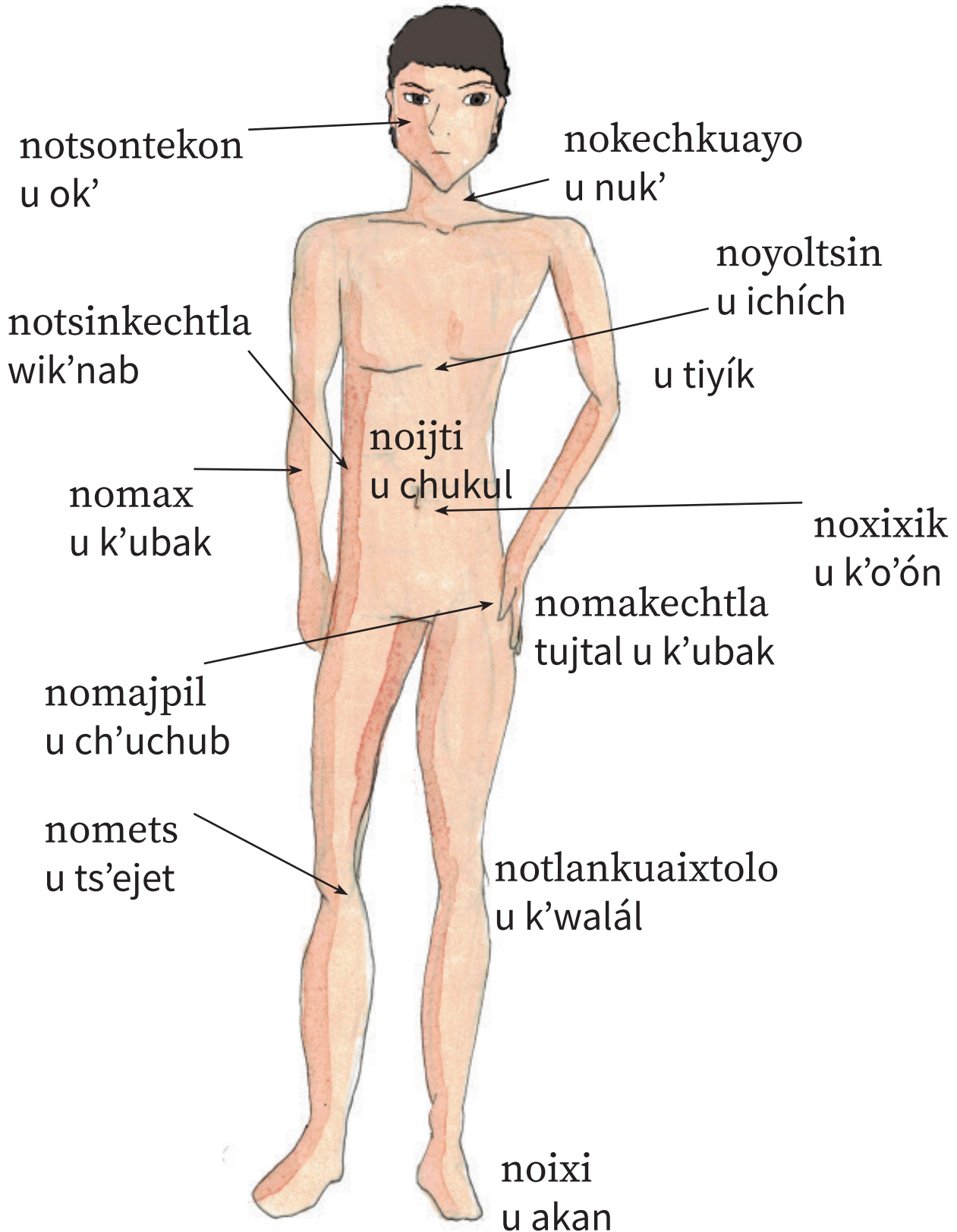
notio  
u ts'uts'

notia  
u ts'uts'mím

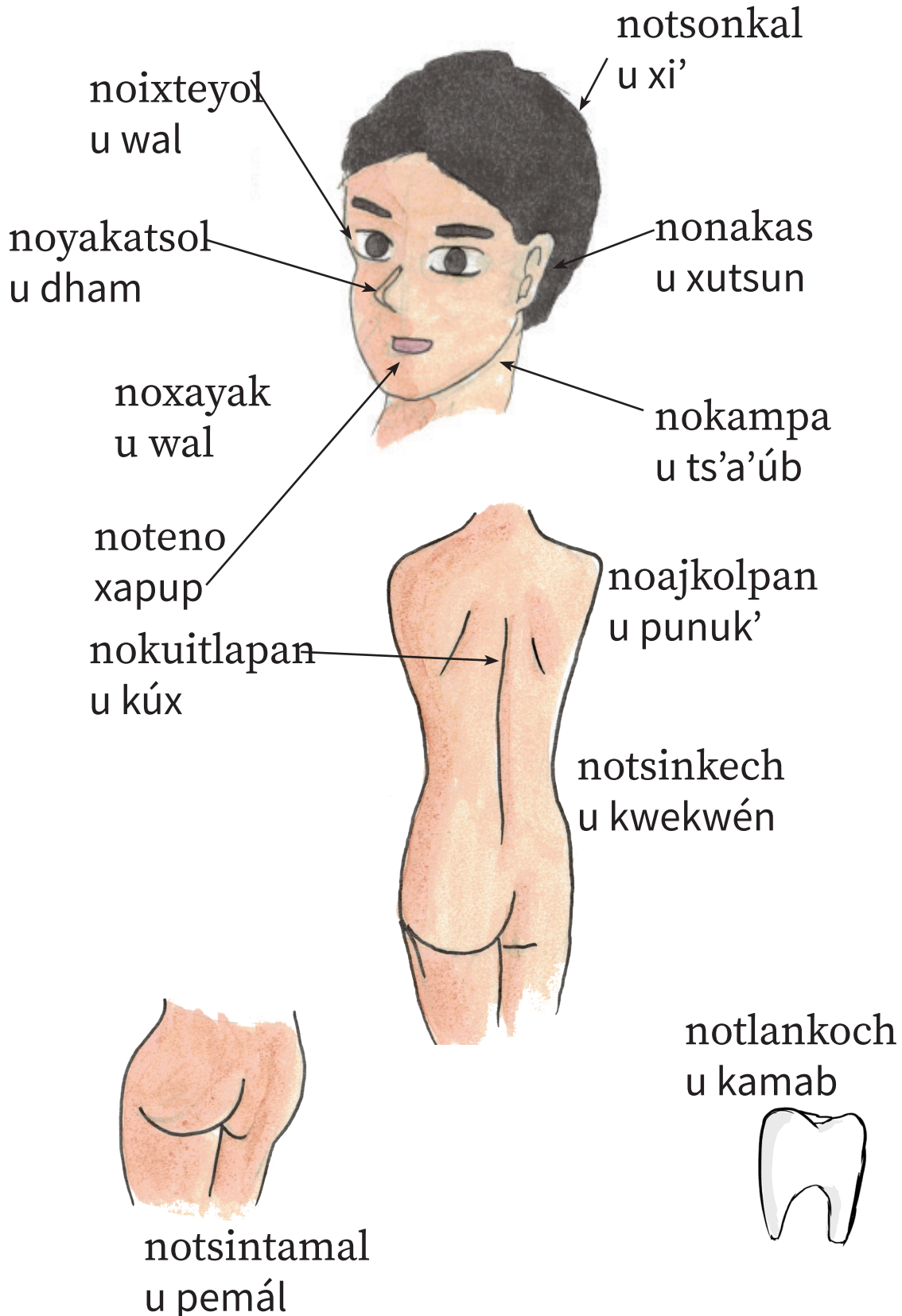
nomachiknij  
u epchal/u atatal/u primo/u prima

# Totlakayo U iniktal

---



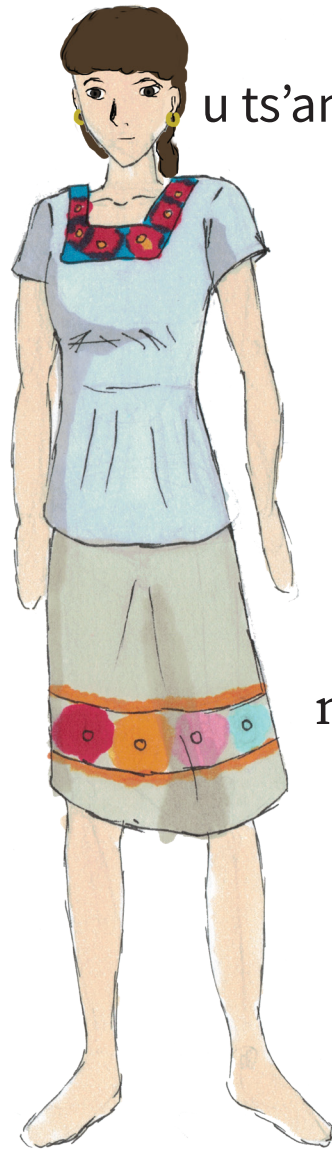
# Totlakayo U iniktal



# Yoyomitl Toltom

---

noyoyon tlamachichiuali

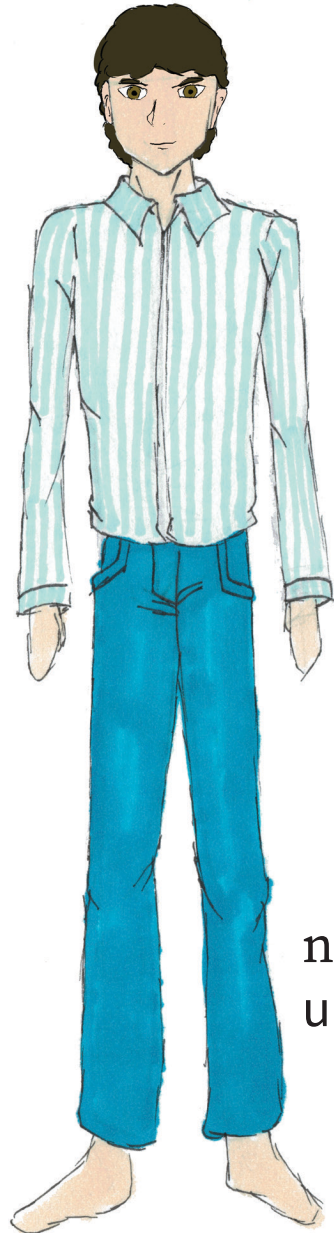


u ts'amuts'

notlajkokuex

# Yoyomitl Toltom

---



noxaketa  
u kotón

nopantalon  
u pat'éb

# Yoyomitl Toltom

---

notsontsaka  
u xumpale



u petób



u ow

nokechken  
u dheyem  
u kotón

u lakab

u pajab

noxaketa  
u kotón



nopantalon  
u pat'éb

noixikakjui  
u pajab



# Yoyomitl Toltom

---



mamali  
akíl



mekapali  
ok'nab

nomorral  
u balixta/ u jalkixta



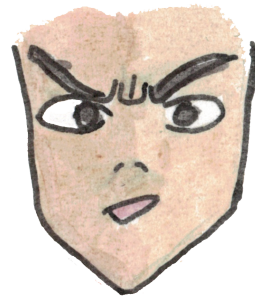
# Tlaelnamikili Axi u ats'al

---

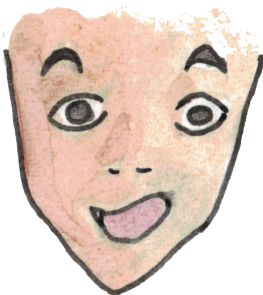
nikuesijtok  
in t'e'pidh



nikualantok  
in tsakúl



nipaktok  
in kulbél

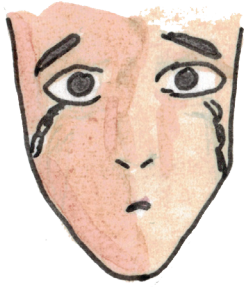


nitlaneneuilijtok  
in tsalpax

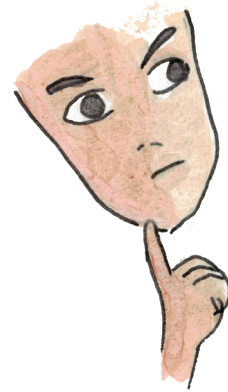
# Tlaelnamikili Axi u ats'al

---

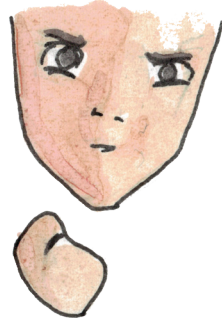
nichokatok  
in uk'nal



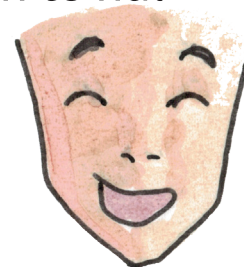
nikelnamiki  
u t'ilál



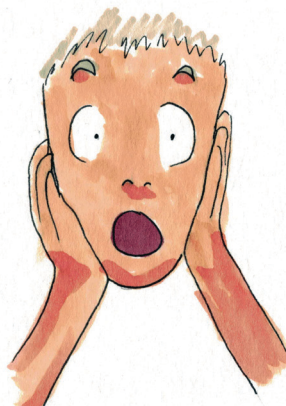
nikualantok  
in tsakukbe'



niuetska  
in te'nal



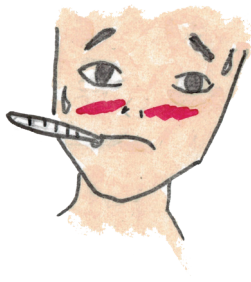
nimajmajtok  
in jik'él



# Kokolistli Yaw'láts

---

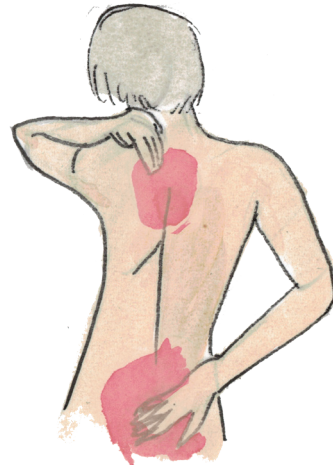
nitotoniya  
in k'ak'él



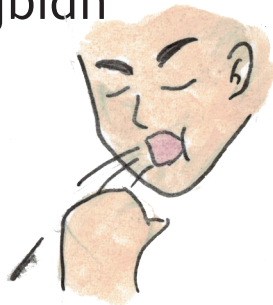
nikokoya  
in ya'úl



nikuakualo  
yájchik u iniktal



nitlatlasi  
in ojbidh



nikuitlapankuakualo  
yajal kux



nimisotlatok  
in xa'al

# Kokolistli Yaw'láts

---

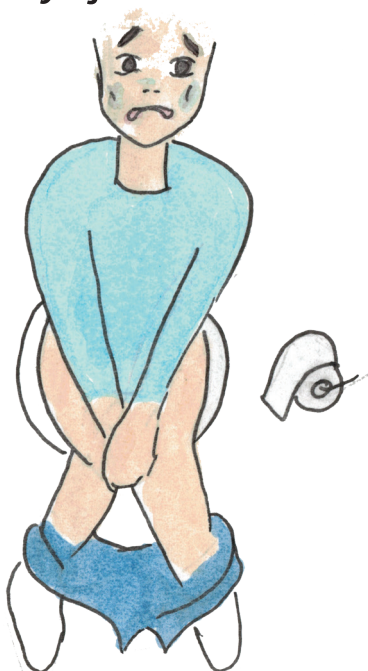
niixpoyauí  
wilel u ok'



kokotl  
pok'el t'it'



apitsali/axixtli  
yajal chukul



nitoskaxokoya  
yatutúl u t'u'úl



# Kokolistli Yaw'láts

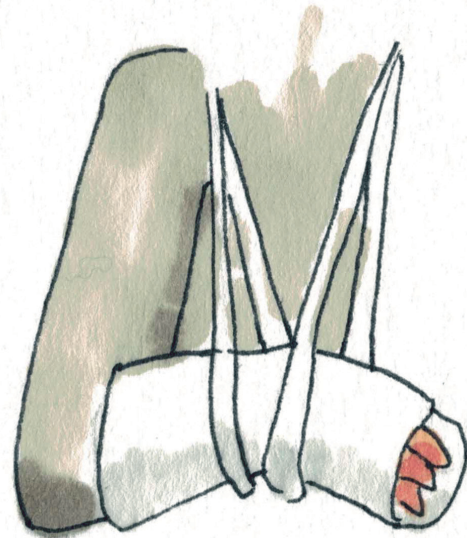
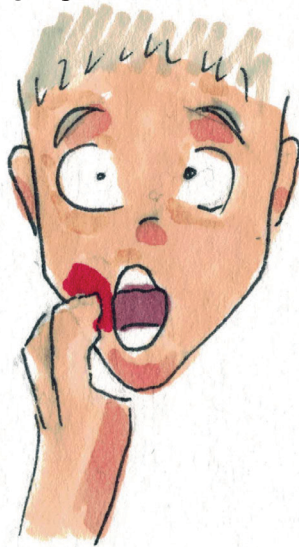
---



nitsonkuakualo  
yajal ok'



nitlankochkuakualo  
yajal kamab



nimapostejki  
pejadh okób

# Kokolistli Yaw'láts

tepajtíketl  
ilalix



koyotepajtíketl  
ilalix



tlanemiltiya  
ko'odh

pajtli  
ilál



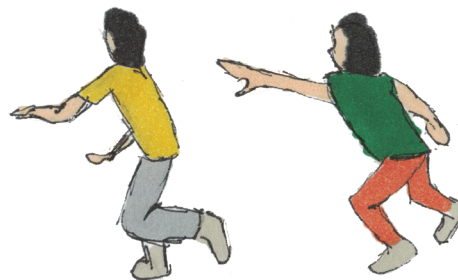
# Mauiltlistli Ubat'intaláb

---

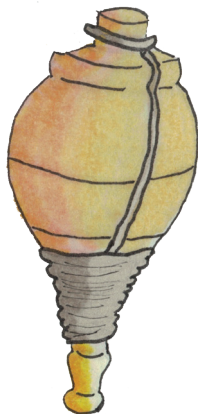
momiyantiliaj  
tsink'ox



tlen moitskiaj  
yakwax



kuatelolmauiltiaj  
tsajk'udh ts'upidh te'



tlajkoj uan temoj  
k'adhá' ani pa'ká'

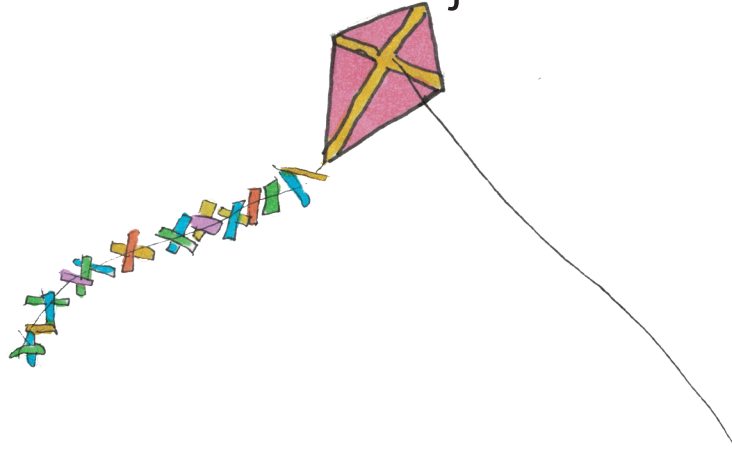




# Mauiltlistli Ubat'intaláb

---

papaloamatl  
jumnal xeklek



pikaltsin  
ubát' atáj



siuapilajauili  
t'ele ubat

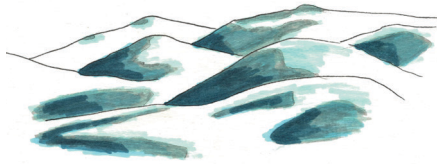


# Iluikak K'aylál



iluikak  
k'aylál

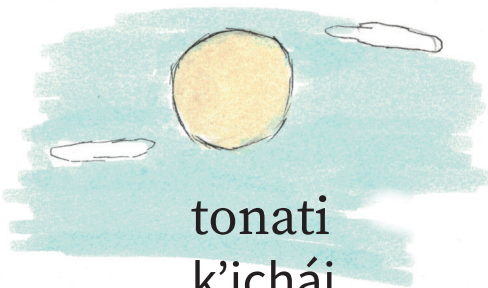
setl  
tsam



sitlali  
ot



metstli  
its'



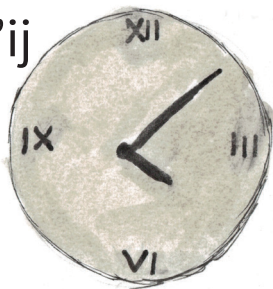
tonati  
k'icháj

tlakomoni  
mam



tlauiteki ajakatl  
tsapik ab

kauitl  
k'ij

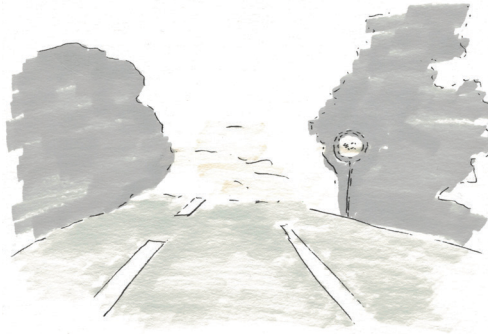


tlapetlani  
ley

mixtli  
mapul



# Iluikak K'aylál

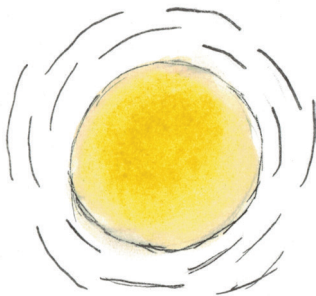


ayauitl  
pajul

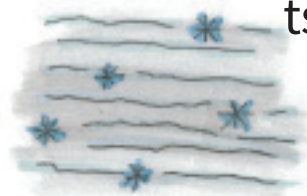


kualo tonatij  
k'apáb a k'icháj

tlatotoniya  
michal / k'ak'



tlaseseya  
tsamay



xopanatl  
tsapik áb



ajaka  
juchnal ik'



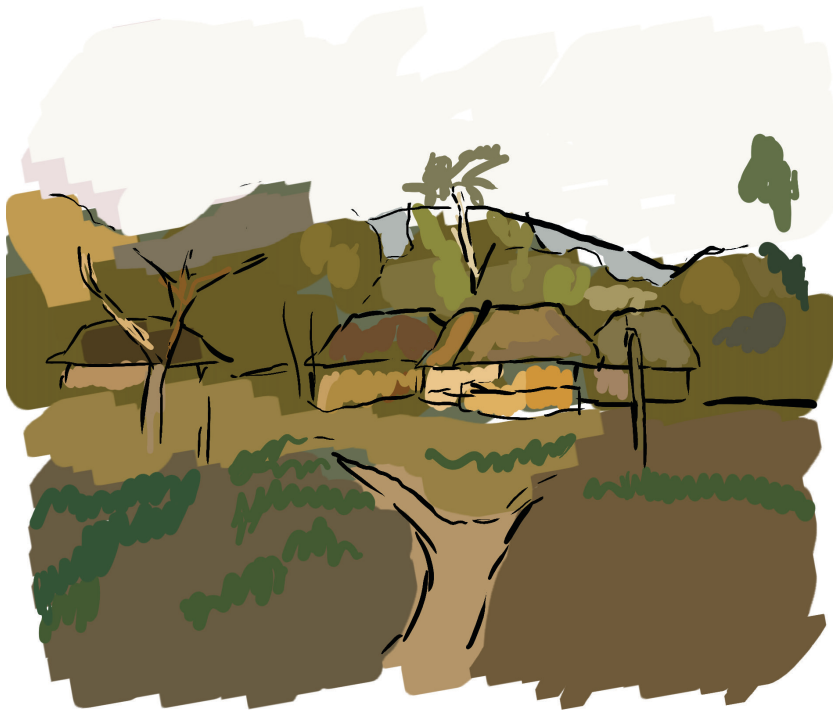
tlapitsaauepsi  
ab

tesiuitl  
t'ujub ab



# Kampaj tiitstokej Ju'ta tu kwajíl

---

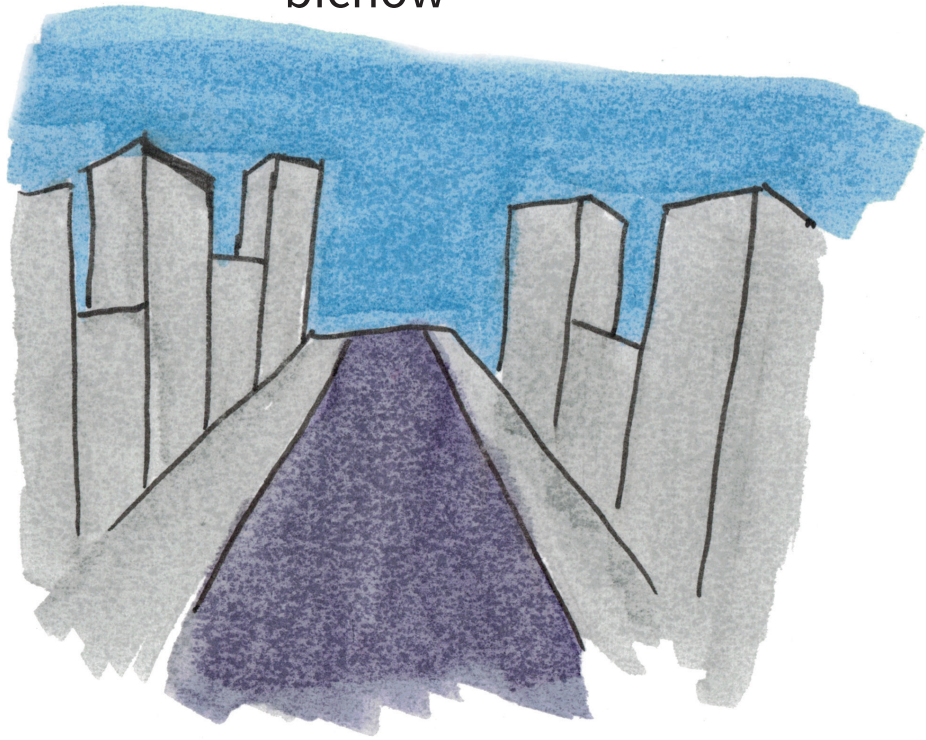


teyouali  
kwenchál

# Kampaj tiitstokej Ju'ta tu kwajíl

---

ueyi altepetl  
bichow

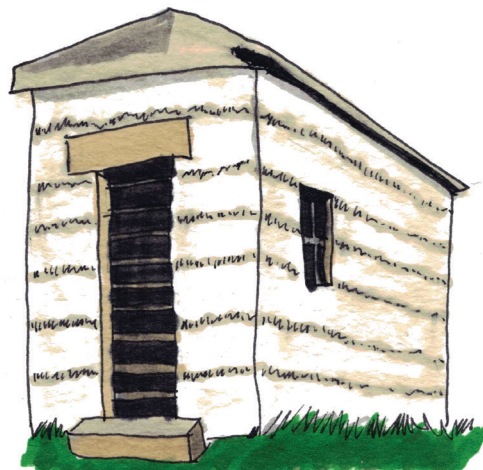


# Kampaj tiitstokej Ju'ta tu kwajíl

---



yoyokaltlamachtili  
tiopan



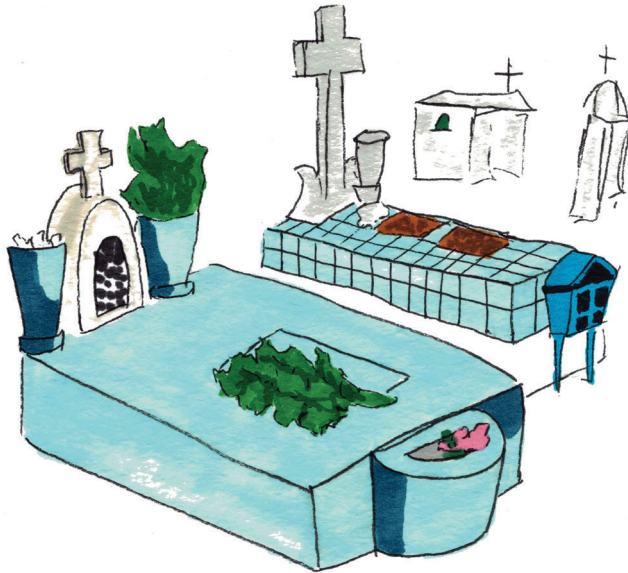
tsakoni  
wik'axte'



tlanemakalistli  
pulaza

# Kampaj tiitstokej Ju'ta tu kwajíl

---



mikakakiuili  
koytaláb

kaltlanemakili  
atáj nujumtaláb



# Tekitiketl Eyal

---



tekitiketl  
eyal



ueyi tlaltekiketl  
eyal



tlanechikoli  
tamkuntaláb



# Tekitikel Eyal

---

komontekitl  
junkudh t'ojláb / faena



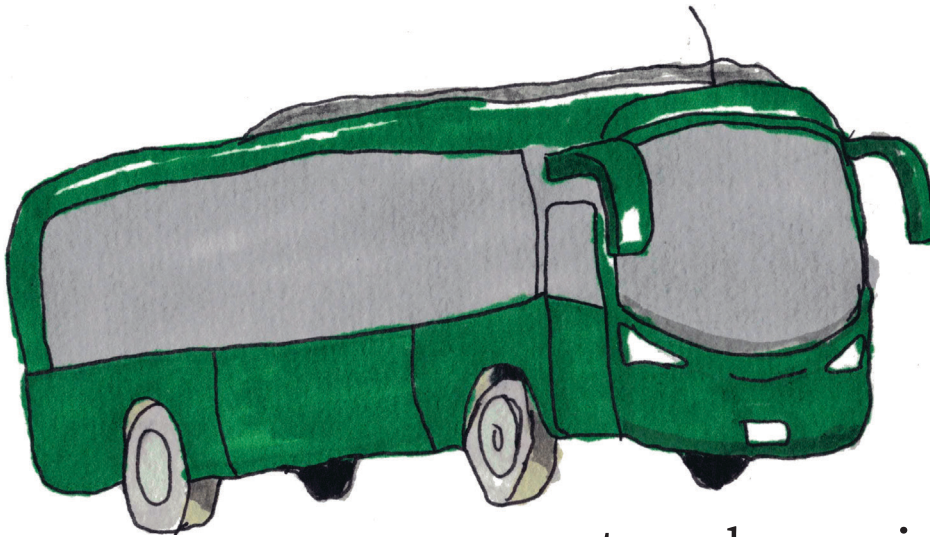
mopaleuiaj  
tolmixtaláb

tlapaleuijketl  
t'ojodh



# Teposkauayojmaseualuika Ne'dhax pat'ál

---



teposkauayoj  
belal pat'ál



teposkauayoj  
tolilil pat'al

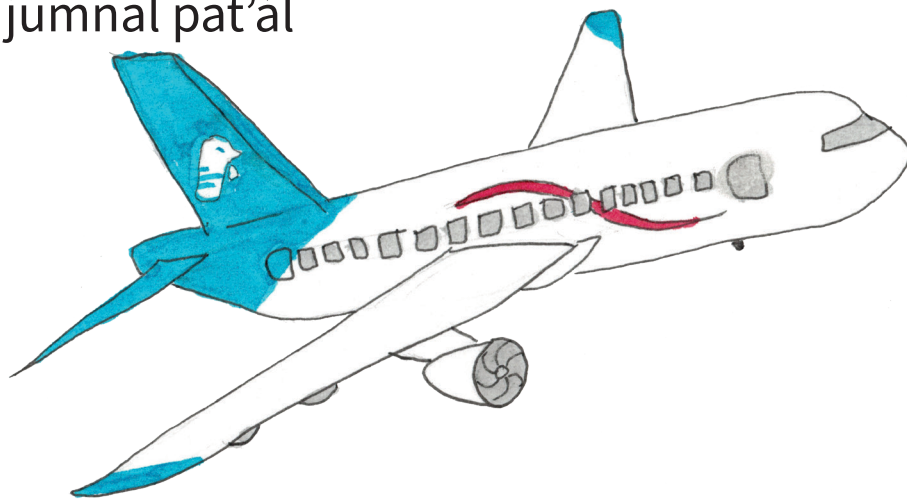
kauayoj  
bichim



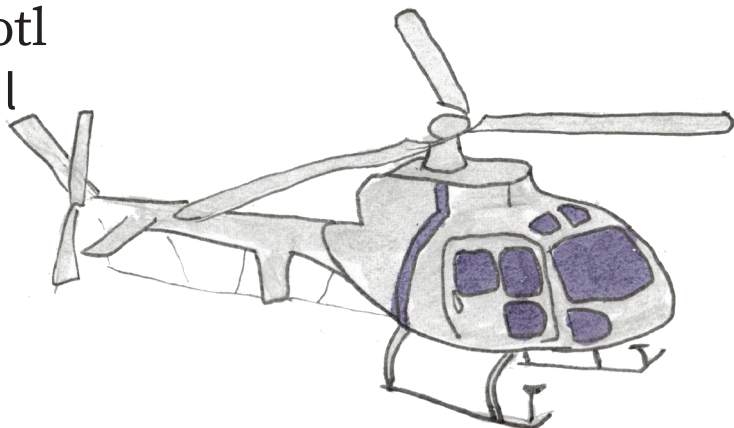
# Teposkauayojmaseualuika Ne'dhax pat'ál

---

tepostototl  
jumnal pat'ál



tepospapalotl  
jumnal pat'ál

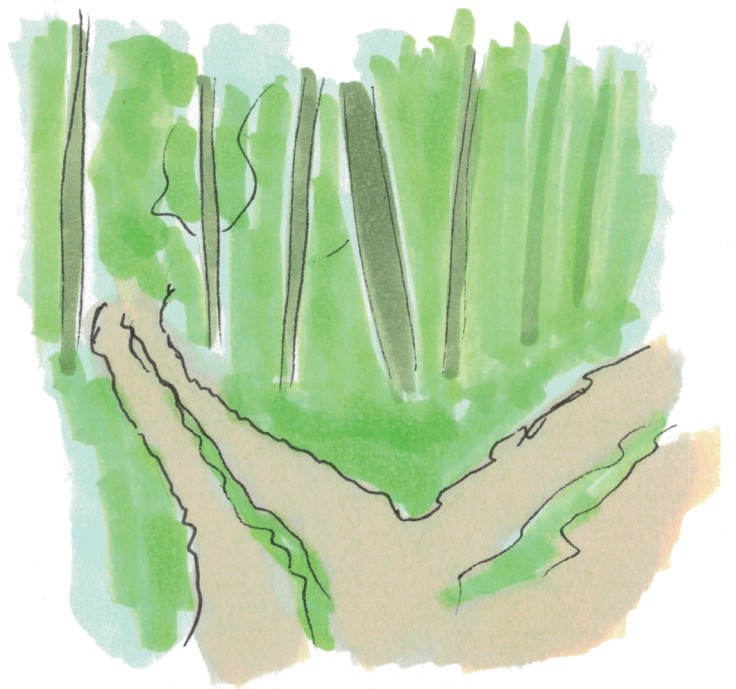


# Ojtli Bel

---



chapopoojtli  
bel



omaxali  
k'we'edh bel

# Ojtli Bel

---

ojtli  
bel

